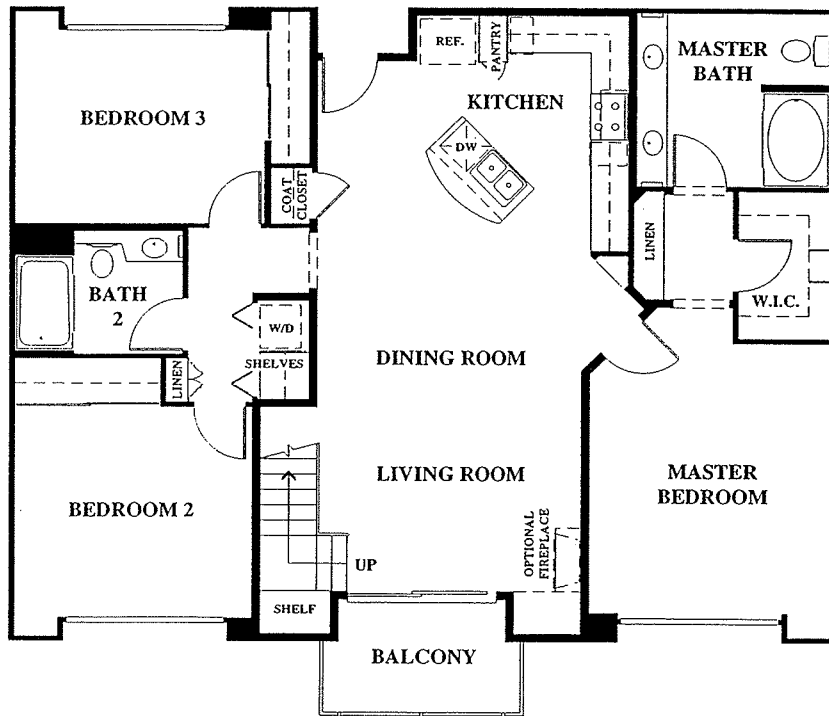


**Option With
Columns**

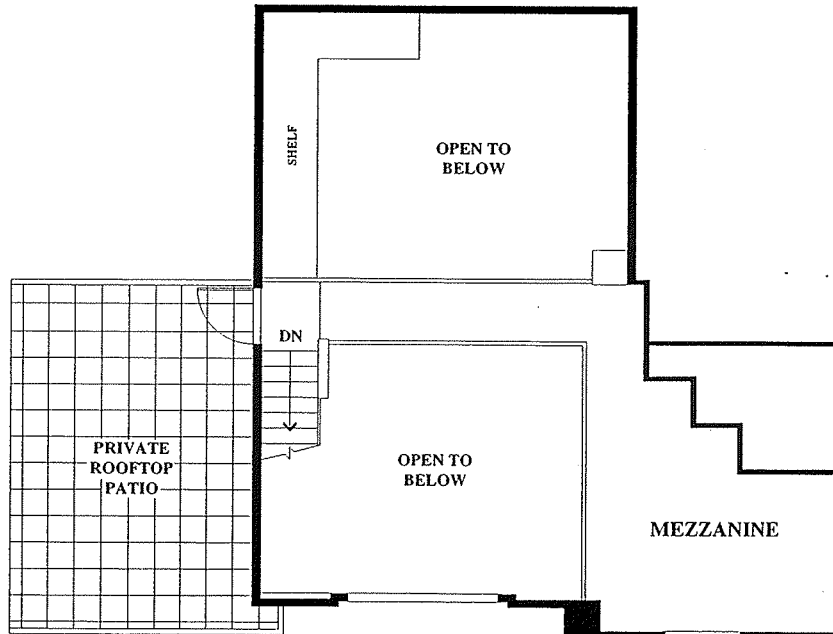
UNION SQUARE Residence 8L

- Innovative spaces for loft-style living
- Approximately 700 sq. ft.

In an effort to improve our product to meet consumer needs, Western Pacific Housing, Inc. reserves the right to modify features, specifications, plans, and pricing without notice and/or obligation. All square footage is approximate. Not all features are available in all plans. The above floorplan is a representation of a typical floorplan at Union Square. Entry, balcony, patio, ceiling, window, wall, and room configurations vary per plan and location in a particular building. See sales representatives for details. ©2002 Western Pacific Housing, Inc.



First Floor

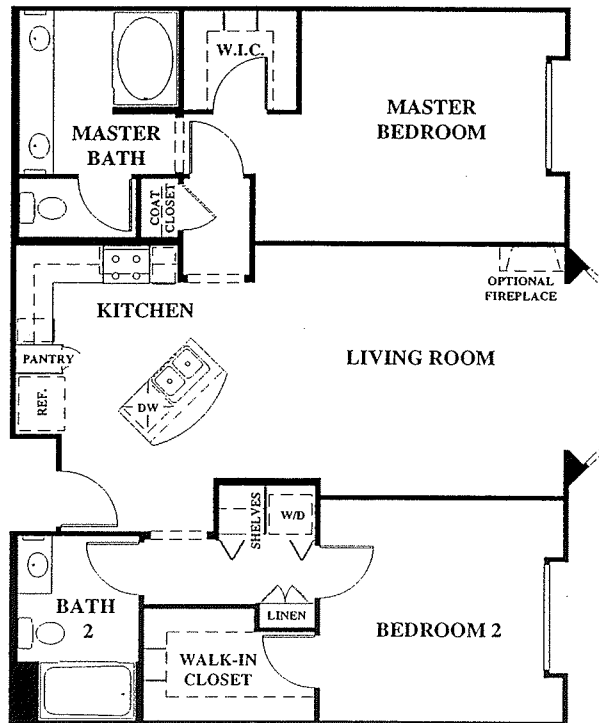


Second Floor

UNION SQUARE Residence 4MD

- Three bedrooms with two-story loft mezzanine and private rooftop patio
- Approximately 1,700 sq. ft.

In an effort to improve our product to meet consumer needs, Western Pacific Housing, Inc. reserves the right to modify features, specifications, plans, and pricing without notice and/or obligation. All square footage is approximate. Not all features are available in all plans. The above floorplan is a representation of a typical floorplan at Union Square. Entry, balcony, patio, ceiling, window, wall, and room configurations vary per plan and location in a particular building. See sales representatives for details. ©2002 Western Pacific Housing, Inc.



UNION SQUARE Residence 1B

- Spacious, dual master suites
- Approximately 1,100 sq. ft.

In an effort to improve our product to meet consumer needs, Western Pacific Housing, Inc. reserves the right to modify features, specifications, plans, and pricing without notice and/or obligation. All square footage is approximate. Not all features are available in all plans. The above floorplan is a representation of a typical floorplan at Union Square. Entry, balcony, patio, ceiling, window, wall, and room configurations vary per plan and location in a particular building. See sales representatives for details. ©2002 Western Pacific Housing, Inc.