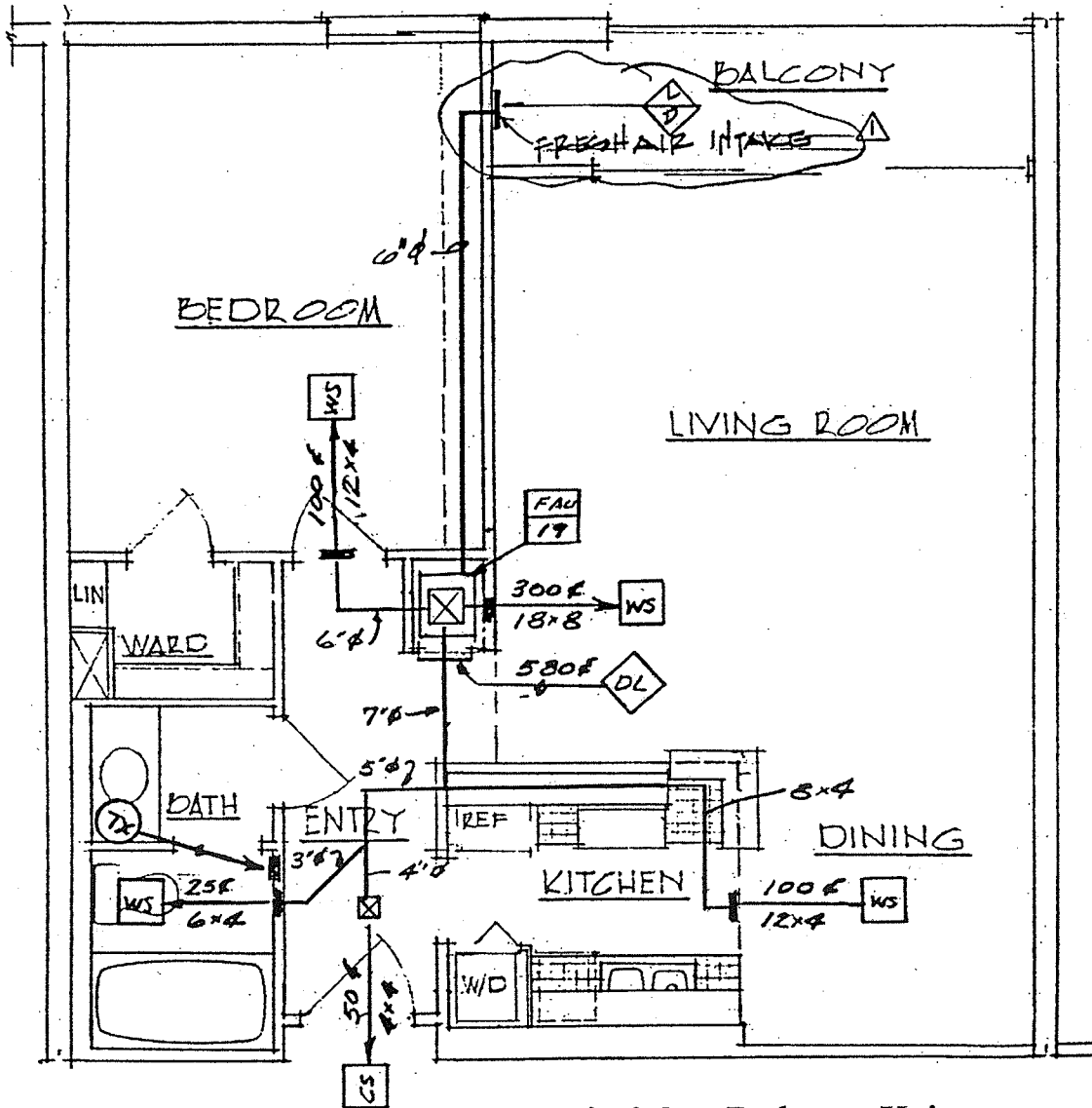


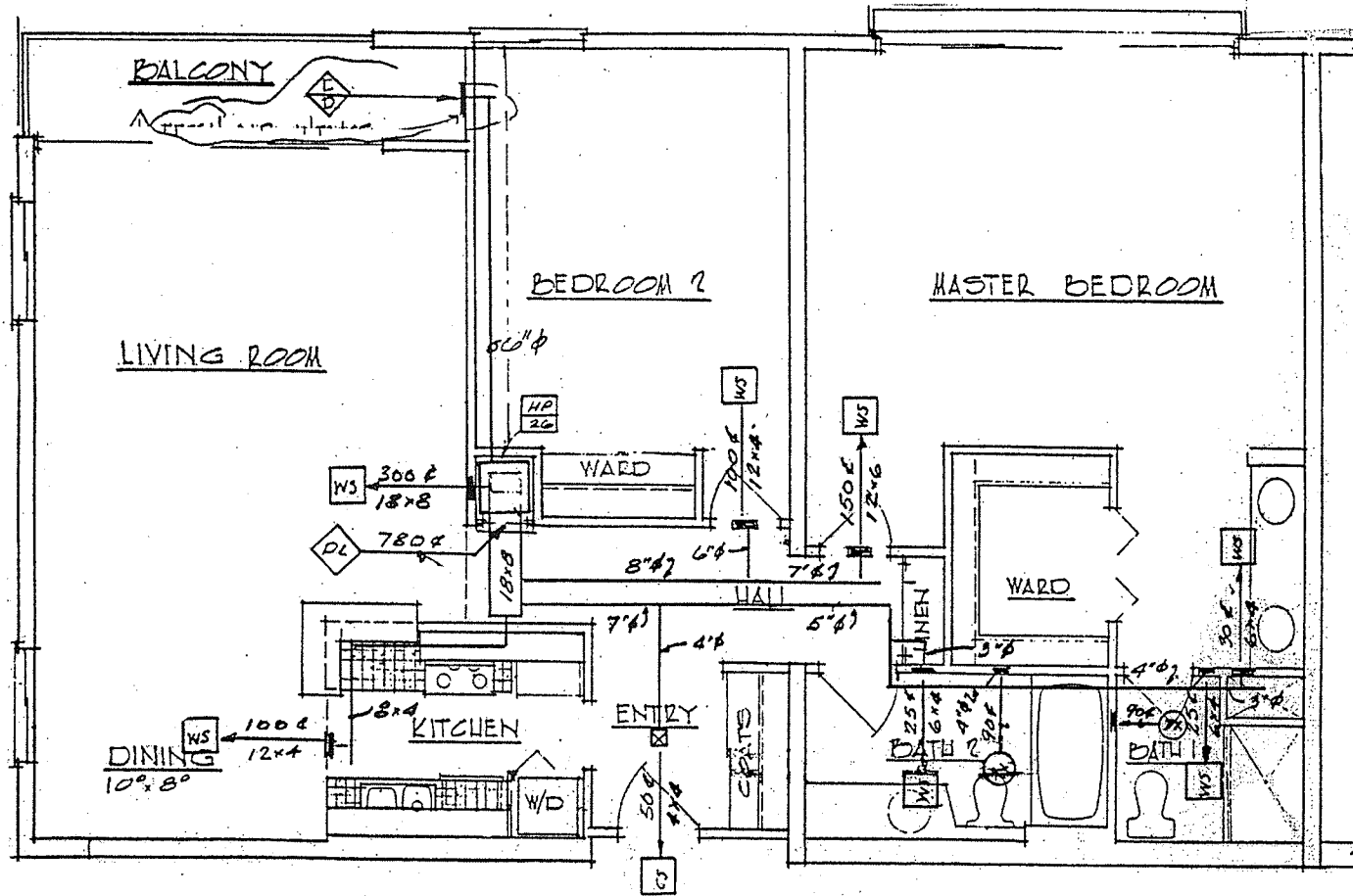
Symphony Terrace



Typical One Bedroom Unit

Floor Plans are compliments of
Bob Kubie 260-1991

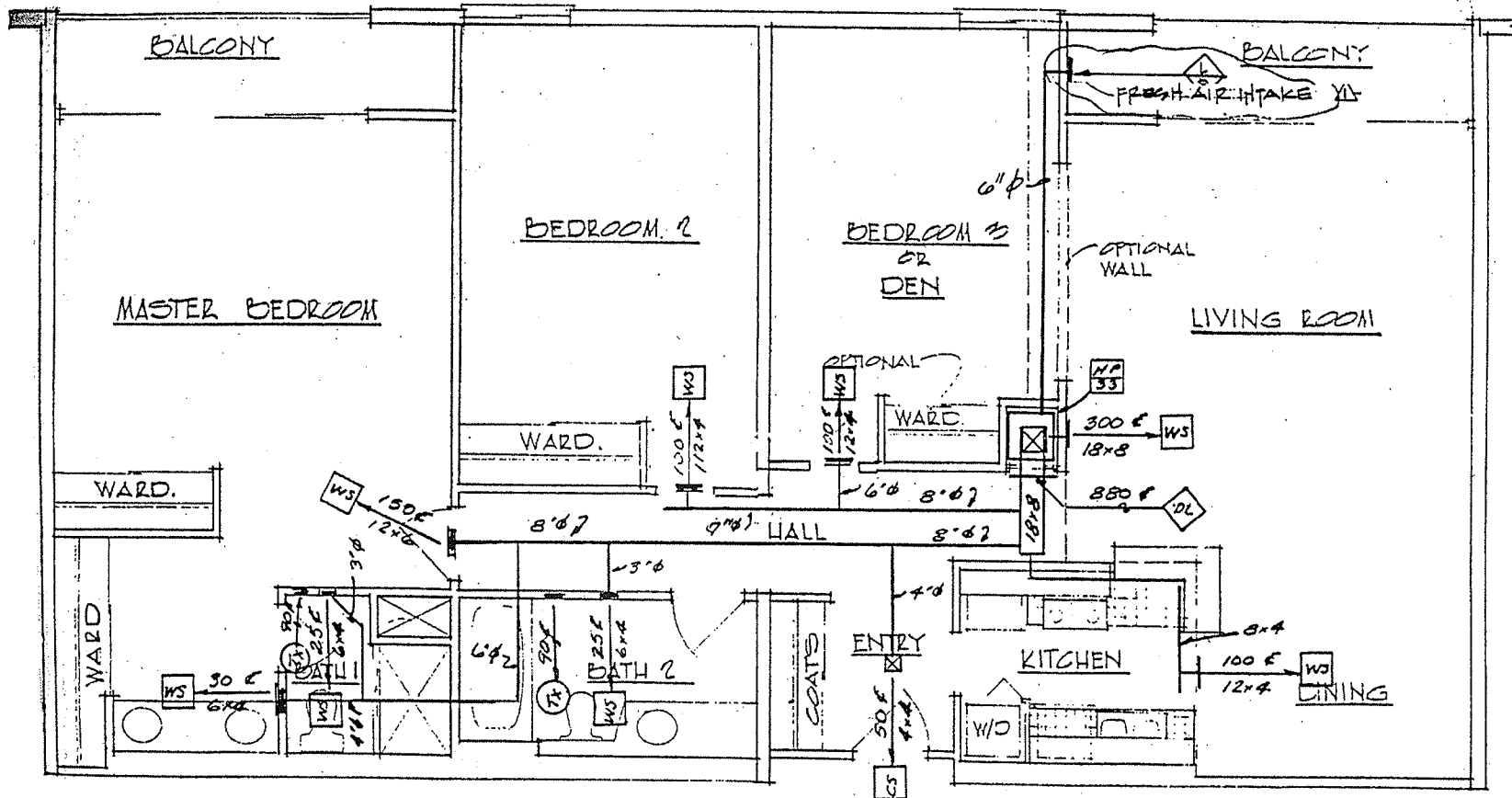
Symphony Terrace



Typical Two Bedroom Unit

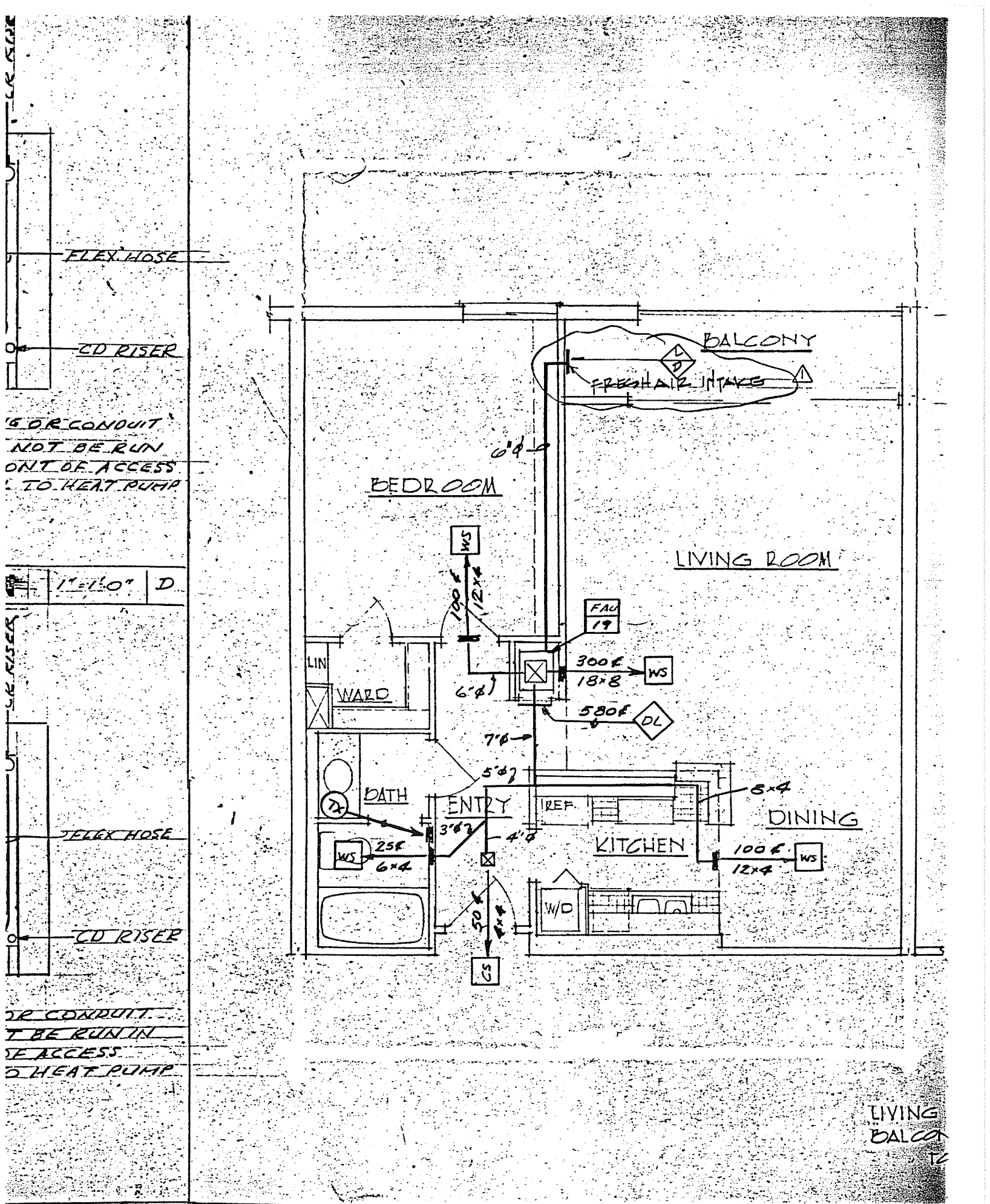
Floor Plans are compliments of
Bob Kubie 260-1991

Symphony Terrace



Typical Three Bedroom Unit

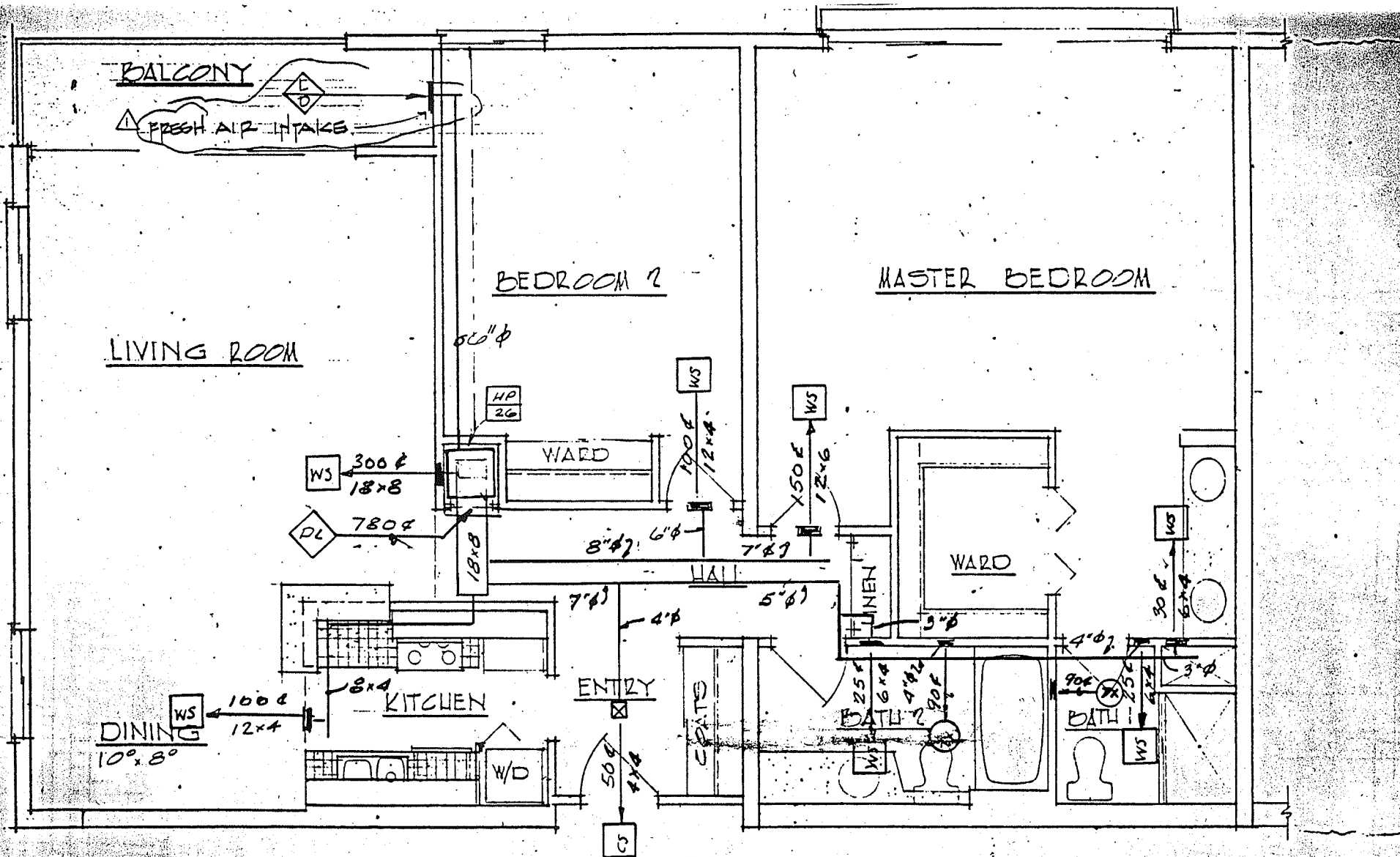
Floor Plans are compliments of
Bob Kubie 260-1991



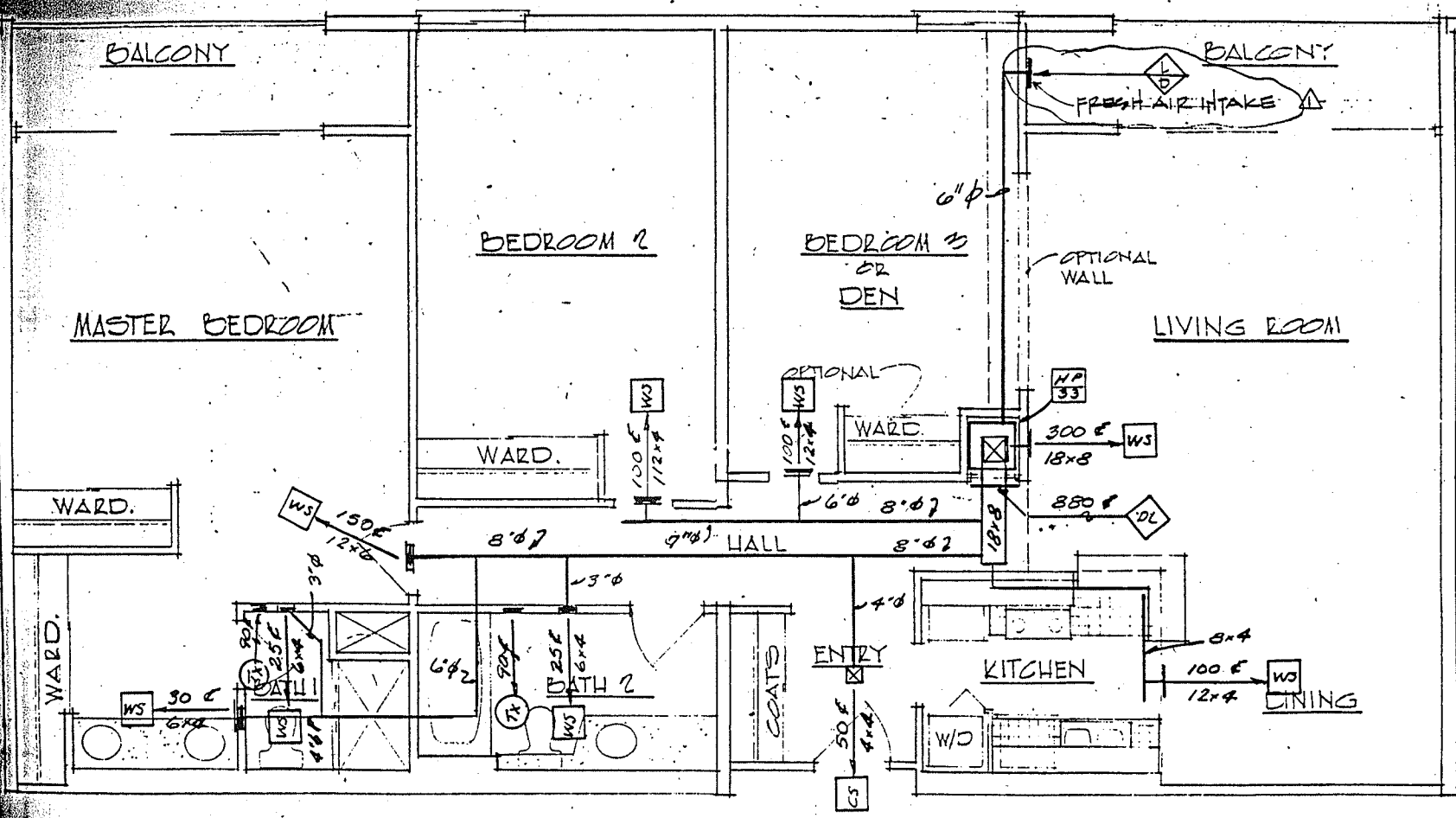
TYPICAL ONE BEDROOM UNIT (20 UNITS)

1/4" = 1'-0"

1" = 1'-0" E



LIVING AREA	1,222
BALCONY	60
TOTAL	<u>1,282</u>



DOCUMENT REC'D
 SEP 3 1980.
 M. H. GOLDEN COMPANY

(1)

Condo Villas
 LIVING AREA 1,420 SQ. FT.
 BALCONIES 120 " " "
 TOTAL 1,540 SQ. FT.

TYPICAL THREE BEDROOM UNIT (12 UNITS)