

PARK BOULEVARD WEST



STUDIO 528 — Downtown New Home Sales Gallery

528 5th Ave., San Diego, CA 92101

From the 5 freeway traveling south, take the Front St. exit and turn left onto Market St. Turn right onto 5th Ave. You'll find 528 5th Ave. just south of Market St. before Island Ave.

PARK BOULEVARD WEST

550 12th Ave., San Diego, CA 92101

From the Studio 528 New Home Sales Gallery, travel south on 5th Ave. and turn left onto Island Ave. Travel east on Island Ave. and turn left onto 12th Ave.



studio528.com

6 1 9 2 3 9 6 4 9 4



PARK BOULEVARD WEST Residence 1A

- Spacious one bedroom • One bath
- Approximately 777 square feet

In an effort to improve our product to meet consumer needs, we reserve the right to modify features, specifications, plans, and pricing without notice and/or obligation. All square footage is approximate. Not all features are available in all plans. The above floorplan is a representation of a typical floorplan at Park Boulevard West. Entry, ceiling, window, and wall configurations vary per plan and location in a particular building. See Sales Representatives for details. ©2003 D.R. Horton Homes - Western Pacific Housing, San Diego Division.

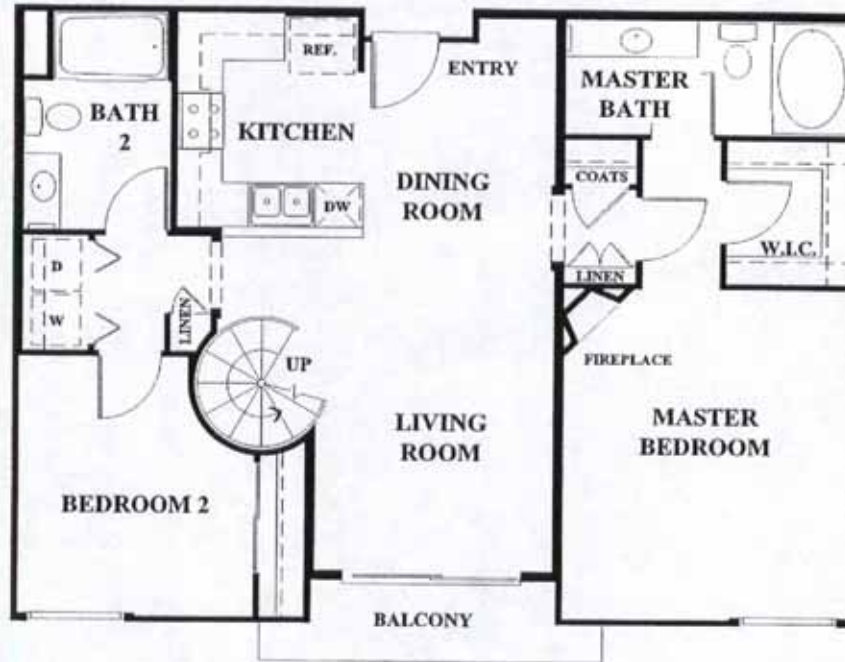


PARK BOULEVARD WEST Residence 2B

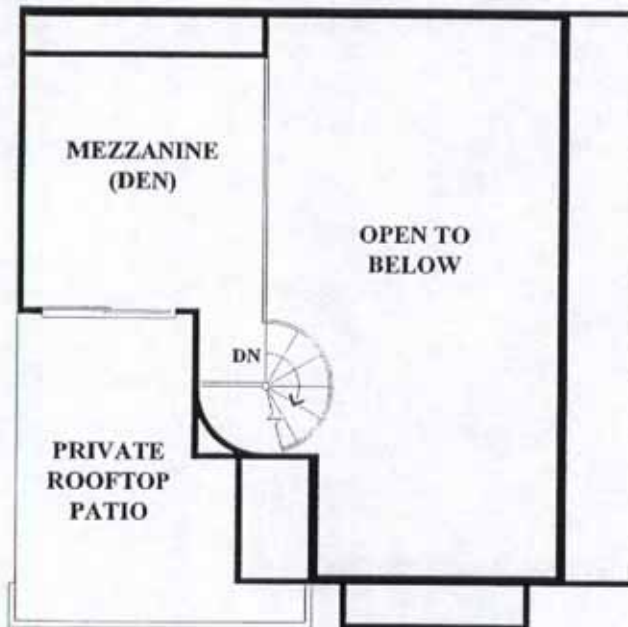
- Two bedrooms • Two baths
- Approximately 1,112 square feet

In an effort to improve our product to meet consumer needs, we reserve the right to modify features, specifications, plans, and pricing without notice and/or obligation. All square footage is approximate. Not all features are available in all plans. The above floorplan is a representation of a typical floorplan at Park Boulevard West. Entry, ceiling, window, and wall configurations vary per plan and location in a particular building. See Sales Representatives for details. ©2003 D.R. Horton Homes - Western Pacific Housing, San Diego Division.

First Floor



Second Floor



PARK BOULEVARD WEST Residence 2A.2 Mezzanine

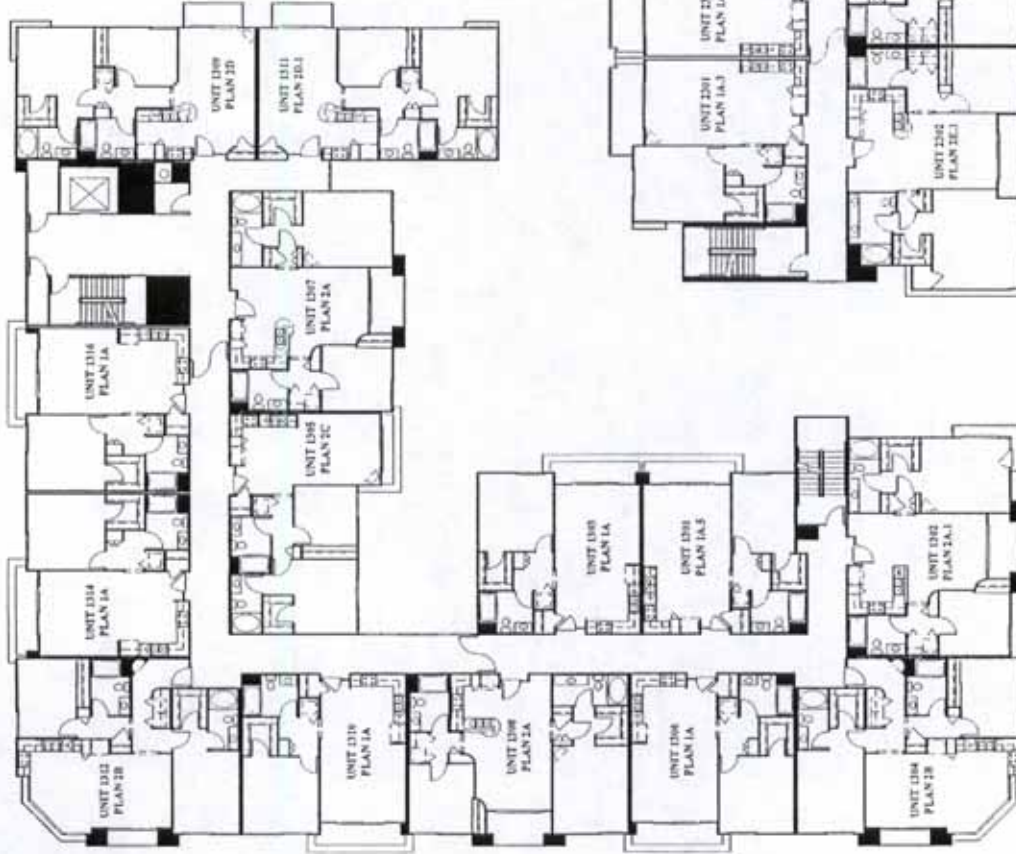
- Two bedrooms • Two baths • Mezzanine (den) • Private rooftop patio
- Approximately 1,183 square feet

In an effort to improve our product to meet consumer needs, we reserve the right to modify features, specifications, plans, and pricing without notice and/or obligation. All square footage is approximate. Not all features are available in all plans. The above floorplan is a representation of a typical floorplan at Park Boulevard West. Entry, ceiling, window, and wall configurations vary per plan and location in a particular building. See Sales Representatives for details. ©2003 D.R. Horton Homes - Western Pacific Housing, San Diego Division.



Phone: (619) 239-6494
www.studio528.com

**Building 1
Third Floor**

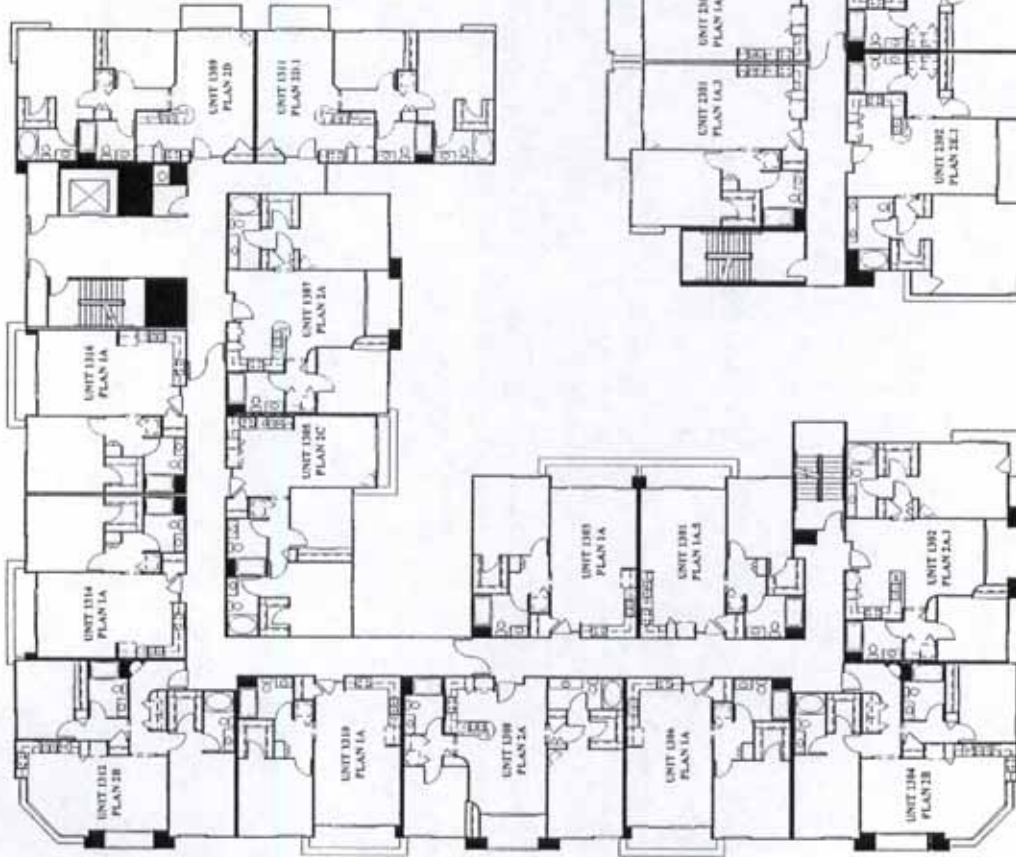


**Building 2
Third Floor**





**Building 1
Fourth Floor**



Phone: (619) 239-6494
www.studio528.com

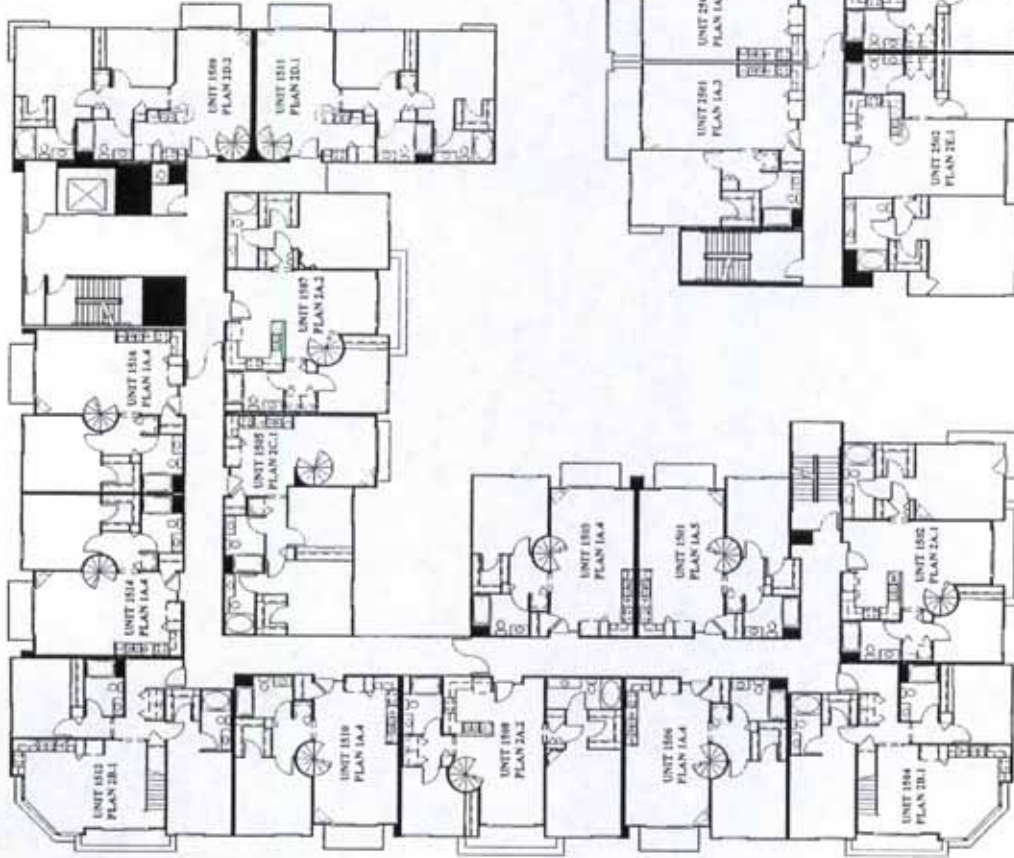
**Building 2
Fourth Floor**



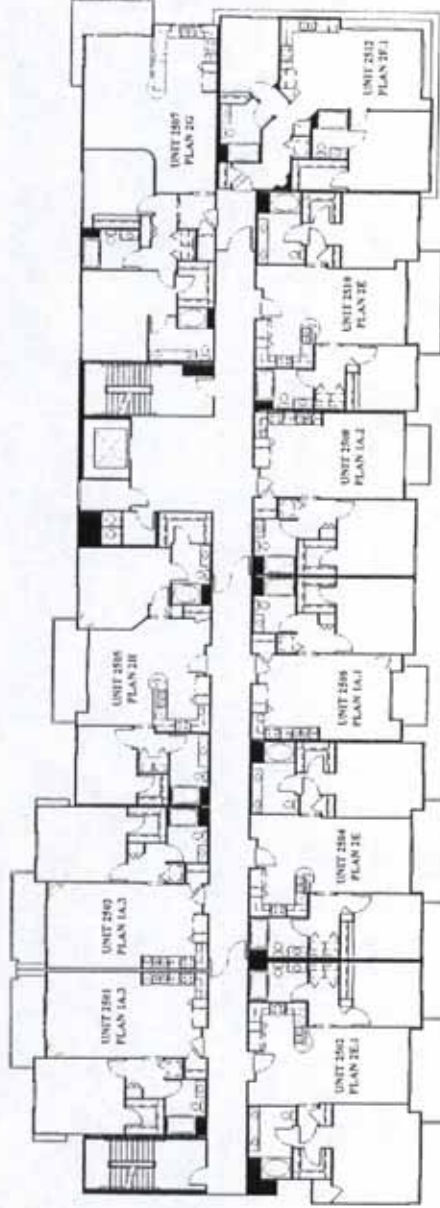


Phone: (619) 239-6494
www.studio528.com

**Building 1
Fifth Floor**



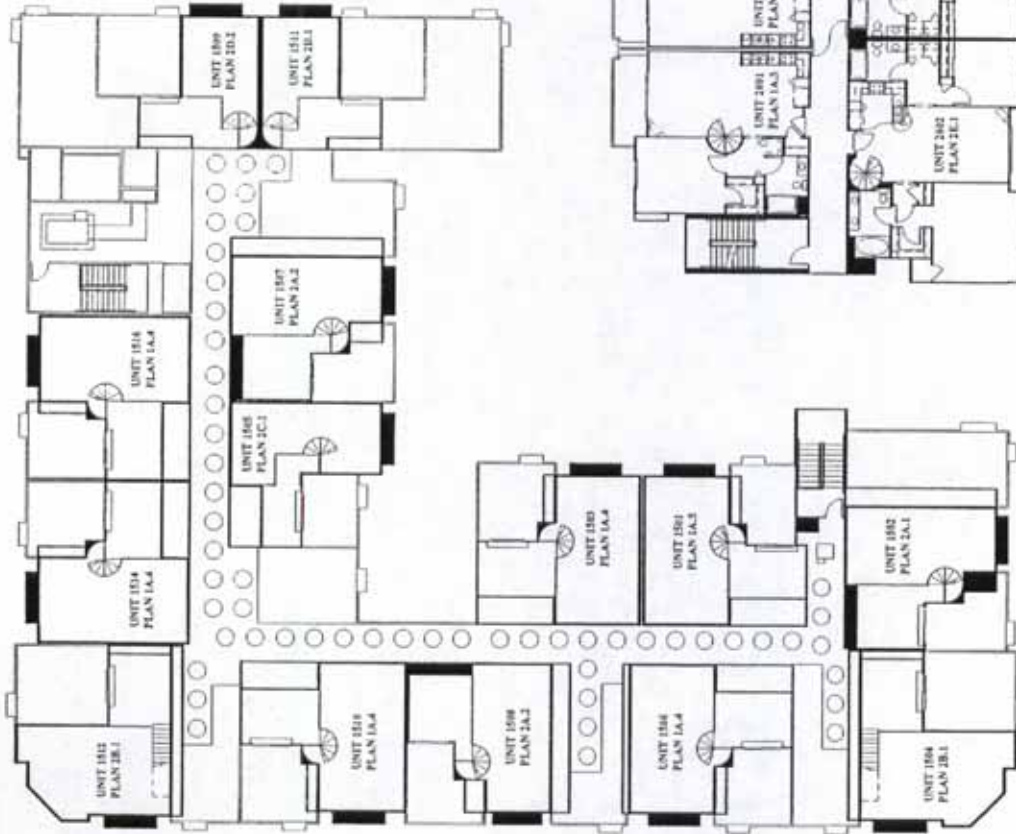
**Building 2
Fifth Floor**



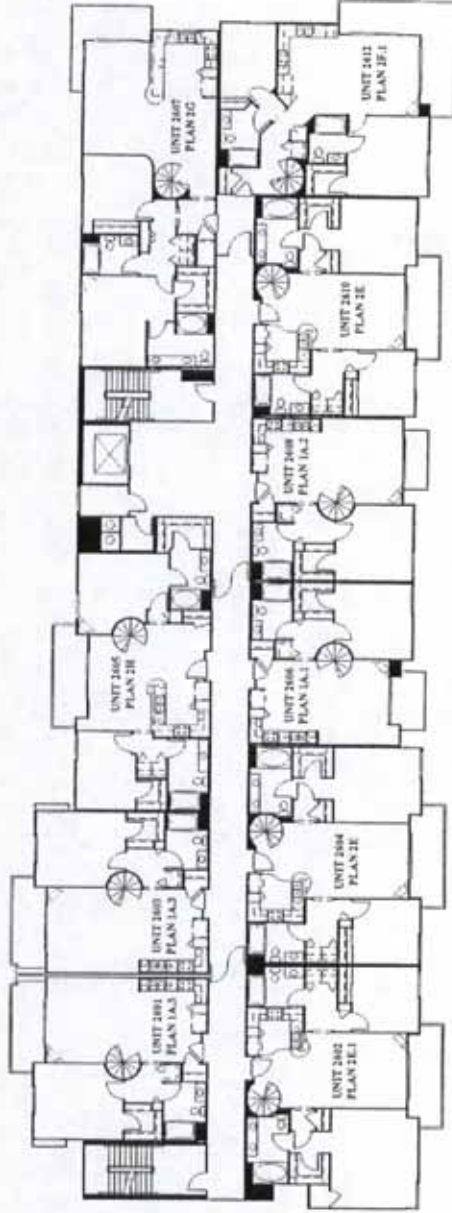


Phone: (619) 239-6494
www.studio528.com

**Building 1
Mezzanine**

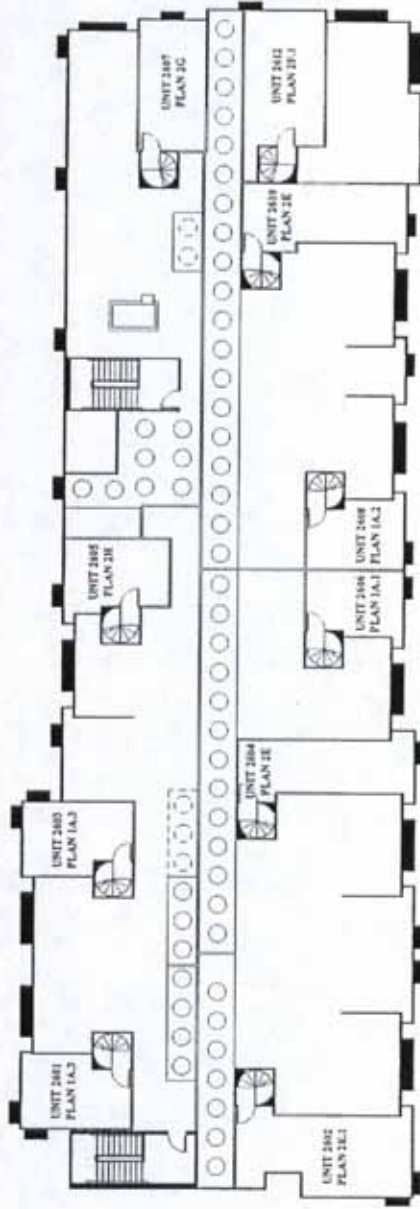


**Building 2
Sixth Floor**





Phone: (619) 239-6494
www.studio528.com



**Building 2
Mezzanine**