



PACIFIC TERRACE

City • Life • Style

Offering:

One-Bedroom

Homes range in size from 604 square feet to 773 square feet.
Prices range from \$244,900 to \$349,900.

One-Bedroom and Den

Homes range in size from 828 square feet to 892 square feet.
Prices range from \$334,900 to \$414,900.

Two-Bedrooms

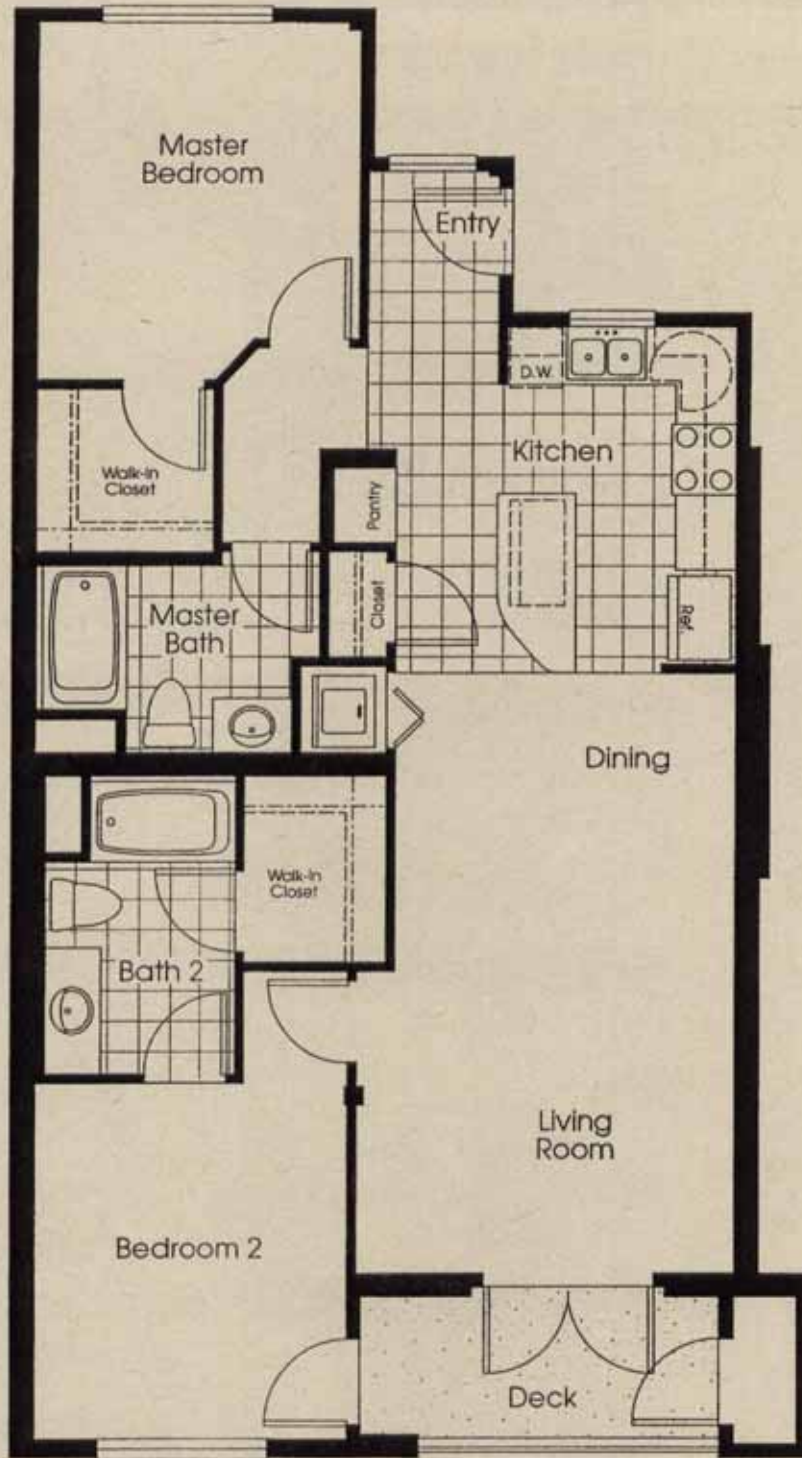
Homes range in size from 925 square feet to 1,251 square feet.
Prices range from \$379,900 to \$564,900.

BUILDING FEATURES:

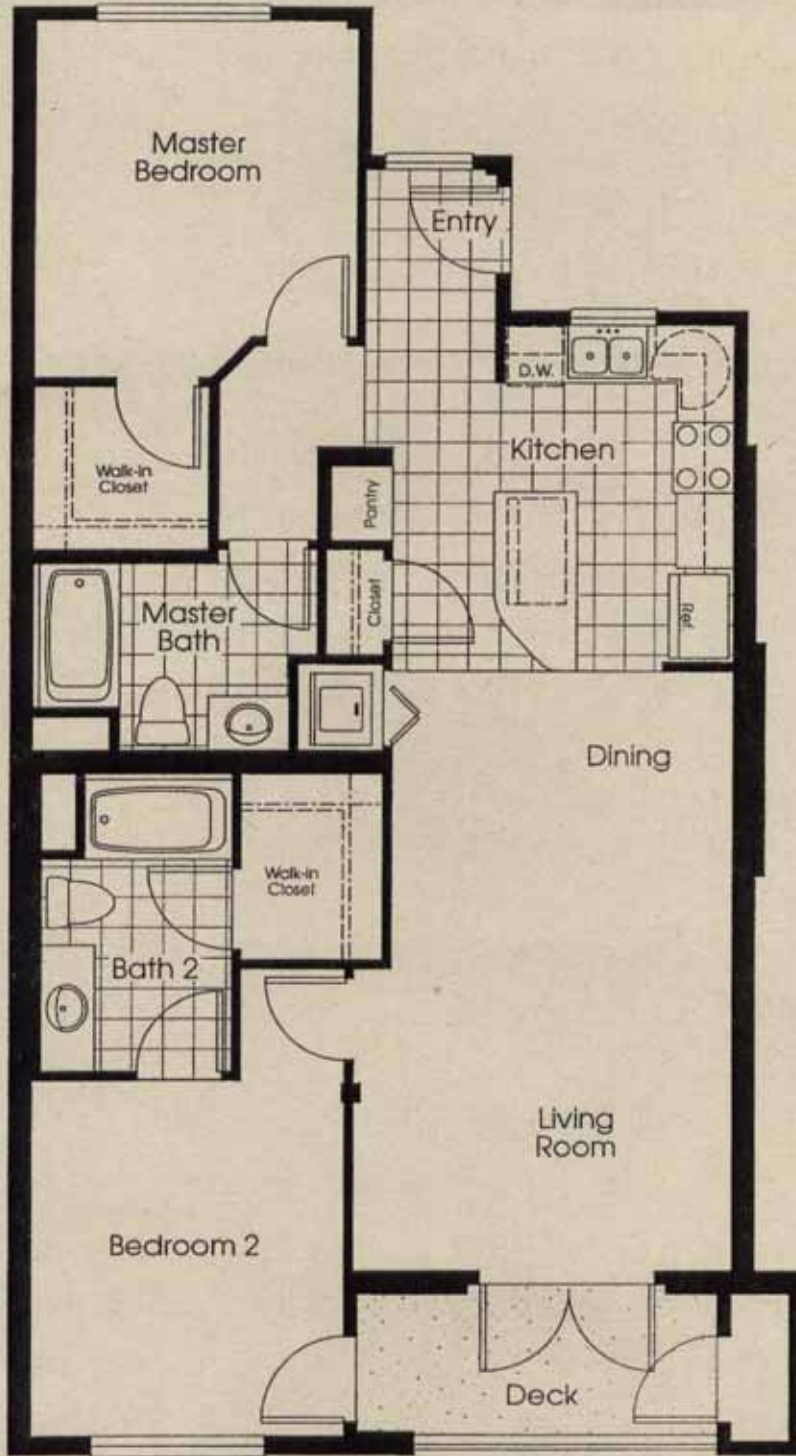
- 57 One- and Two-bedroom condominium homes, some with a den
- Centrally located on J Street, between Third and Fourth avenues
- Adjacent to the Horton Grand Theater
- Bordered by the Gaslamp Quarter, Marina District and the Asia-Pacific Historic District
- Only three blocks to Horton Plaza, the Marina and the new Baseball Park
- Distinctive architectural styling
- Gated residential entries
- Cozy lobby and entry foyer
- Two conveniently located elevators
- Lushly landscaped entry and courtyard
- Enhanced walkways and entry porch lighting
- Sixth floor view terrace with sun deck, landscaping and barbecue
- Quality, non-combustible construction with fire sprinklers for added protection
- Contained trash area with refuse chutes at each level
- Gated underground parking

INDIVIDUAL HOME FEATURES:

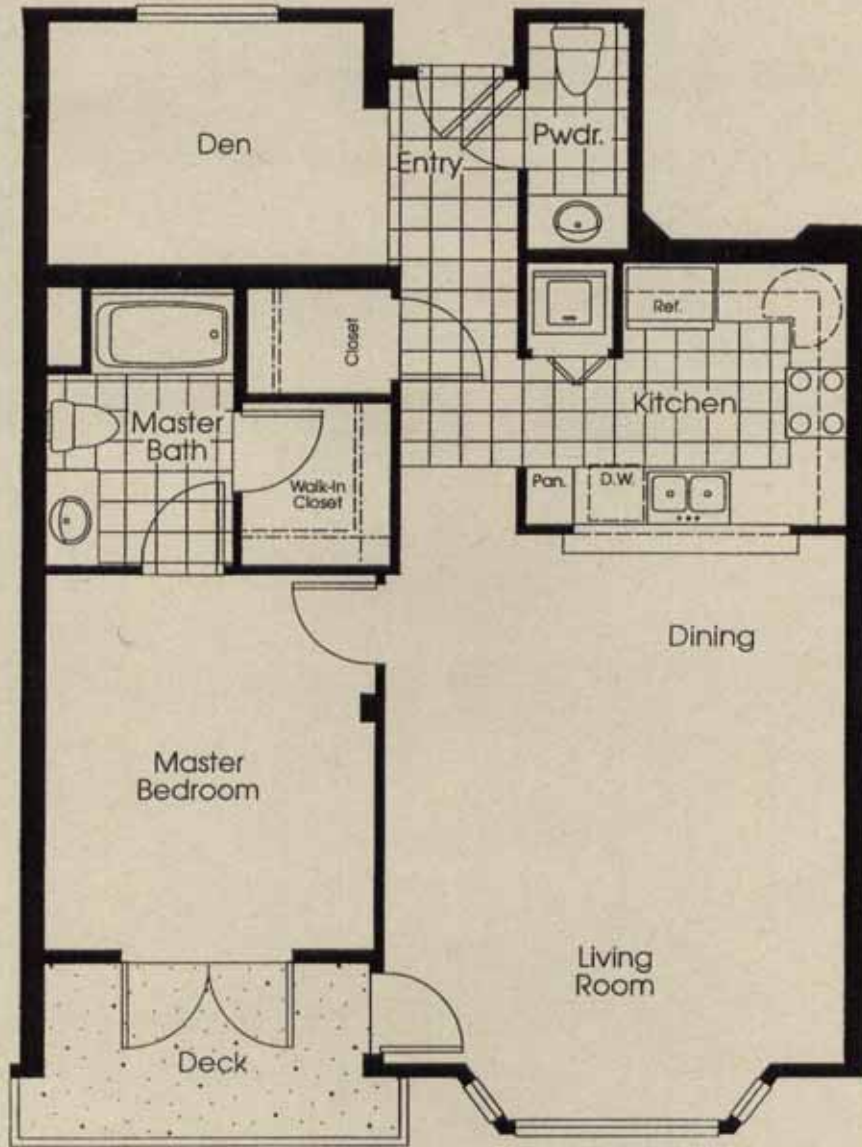
- Efficient, well-designed floor plans with balconies
- Custom entry lighting and door hardware
- High ceilings and large windows
- Rounded drywall corners
- Raised panel interior doors
- Tiled entry, kitchen and bath flooring
- Plush carpeting throughout living areas
- Architecturally specified lighting in kitchens & bathrooms
- Efficient kitchens with pantries in most units
- European cabinets and granite tile counter tops
- Dual-compartment cast-iron kitchen sink
- General Electric kitchen appliances:
 - Refrigerator
 - Self-cleaning oven
 - Microwave with
 - Multi-cycle dishwasher
- Built-in exhaust hood
- Full-size, stacked Washer & Dryer
- China lavatories and deep tubs in bathrooms
- Large bedroom closets
- High-performance electrical & telecommunications wiring
- Dual-glazed windows for temperature and sound insulation
- Thermostat controlled Heating and air conditioning
- Abundant storage



Unit 1A
201, 301

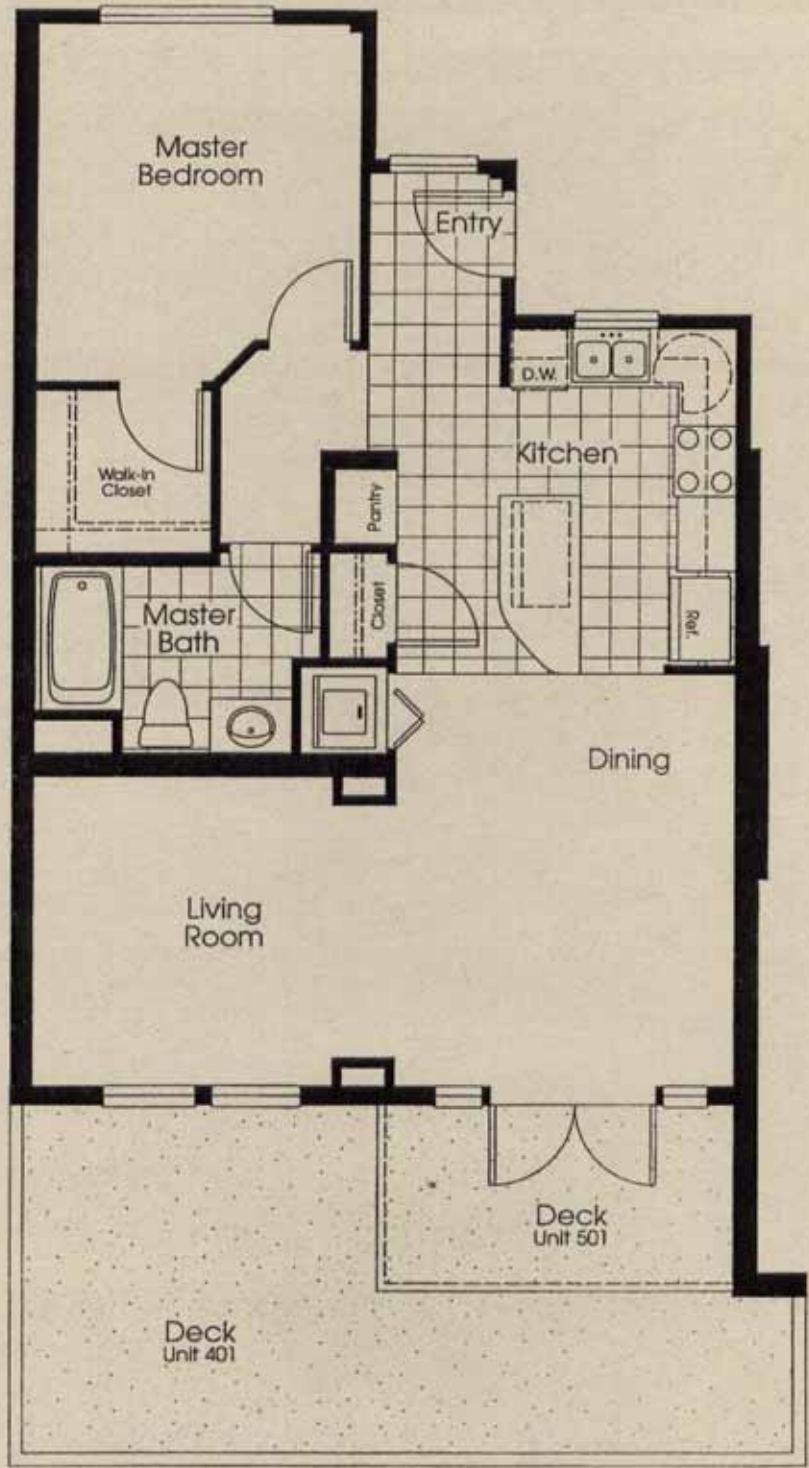


Unit 1A
201, 301

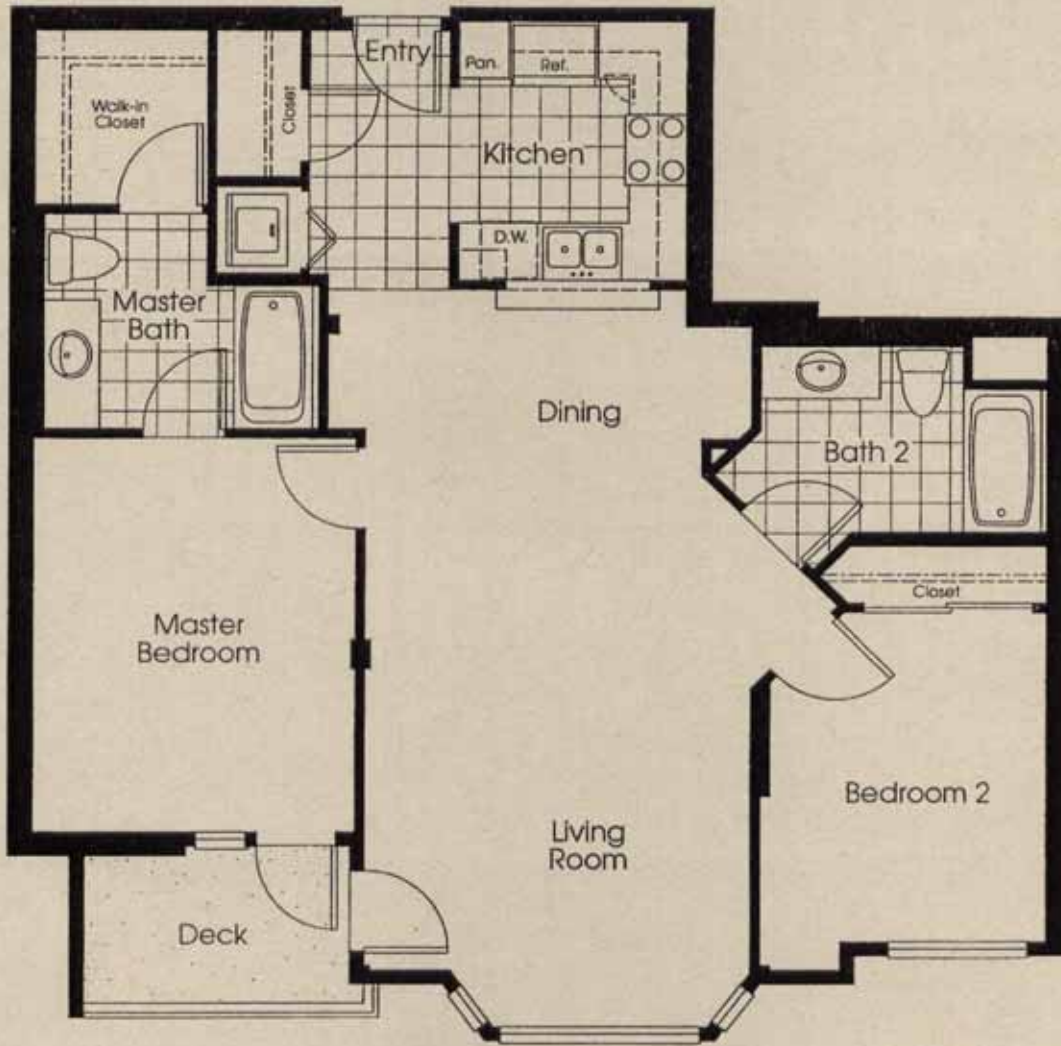


Unit 7

207, 307, 407, 507, 607

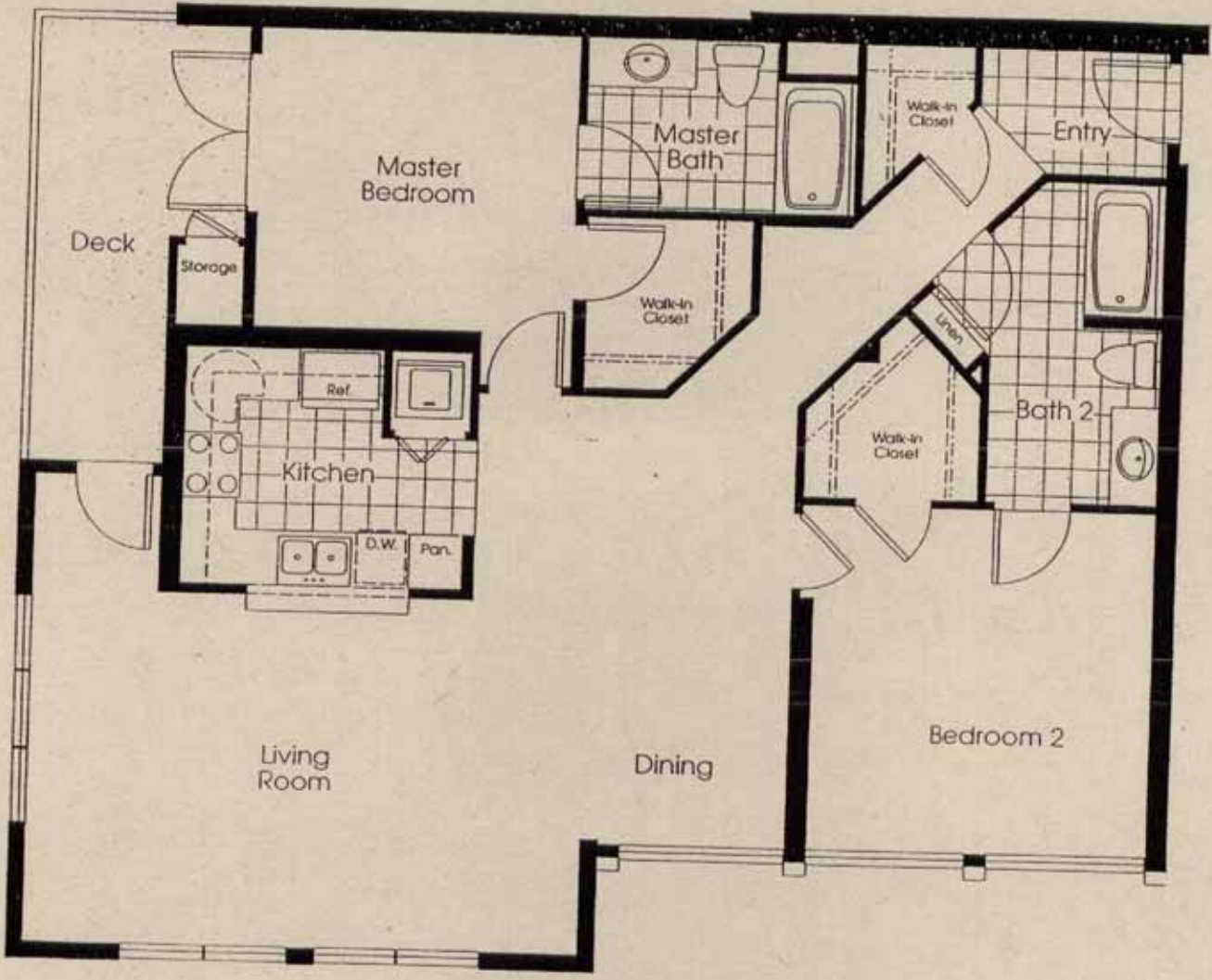


Unit 1B
401, 501

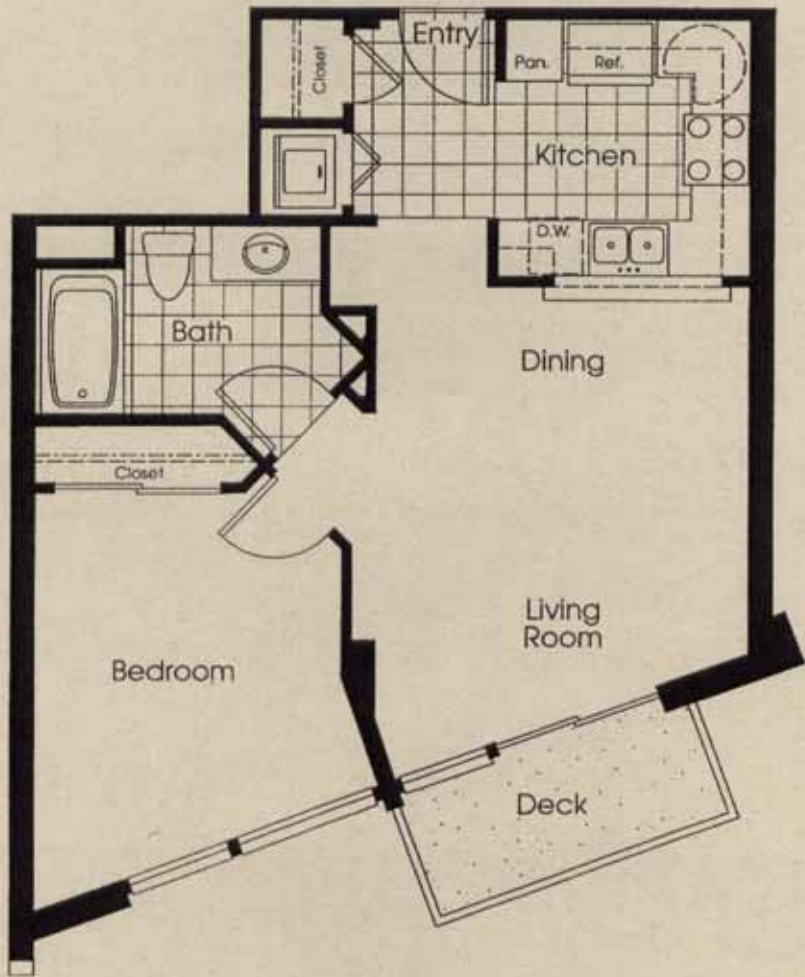


Unit 2

202, 302, 402, 502, 602

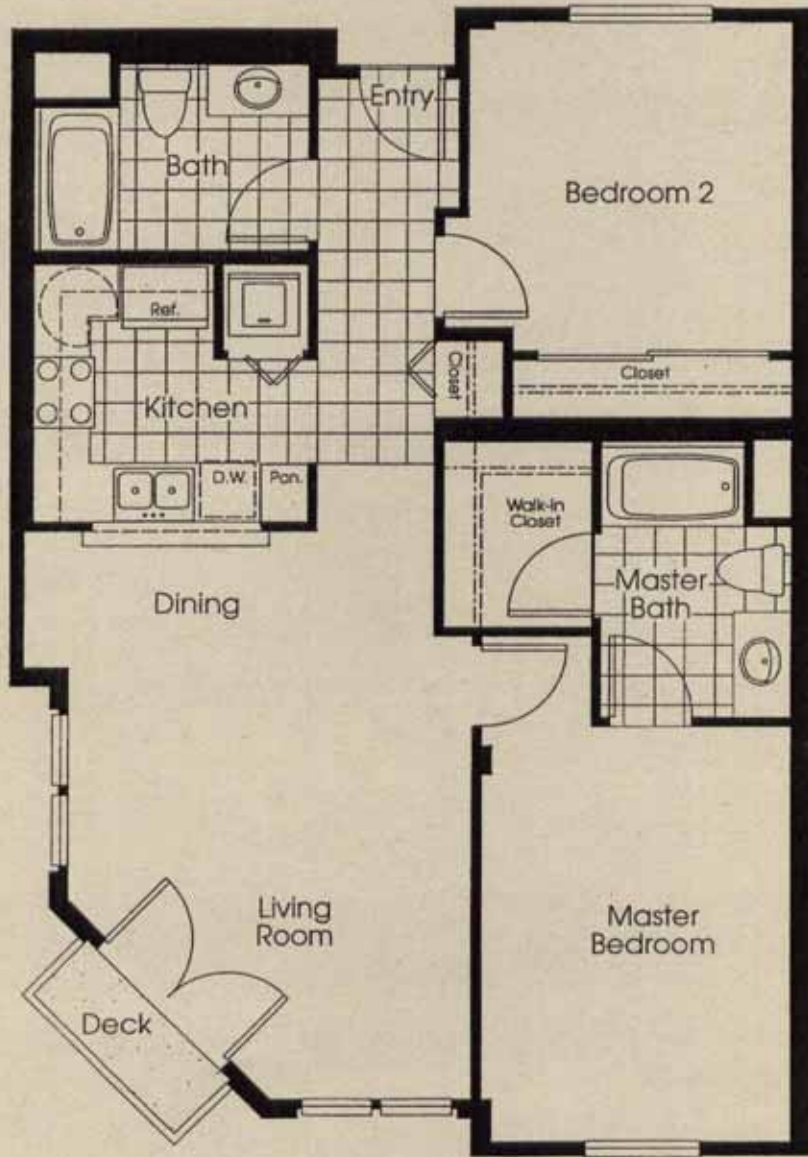


Unit 3
203, 303, 403, 503, 603



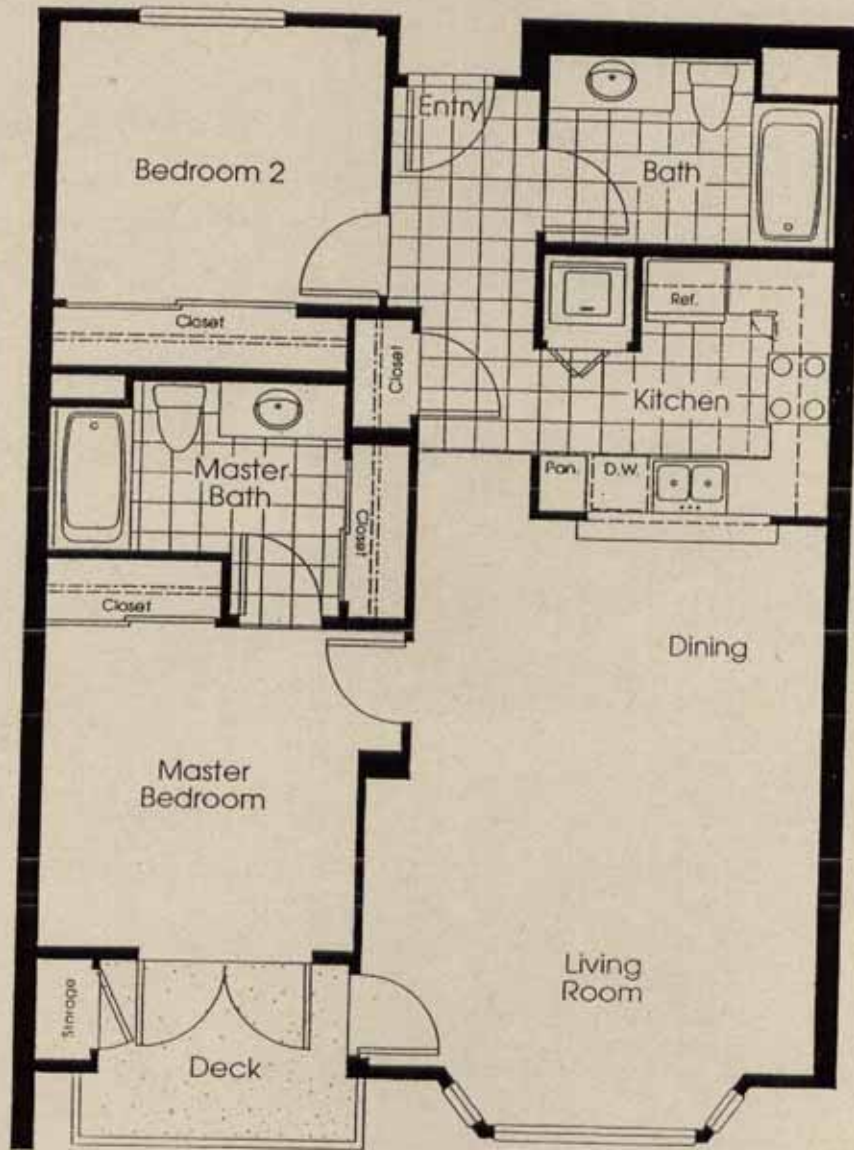
Unit 4

304, 404, 504

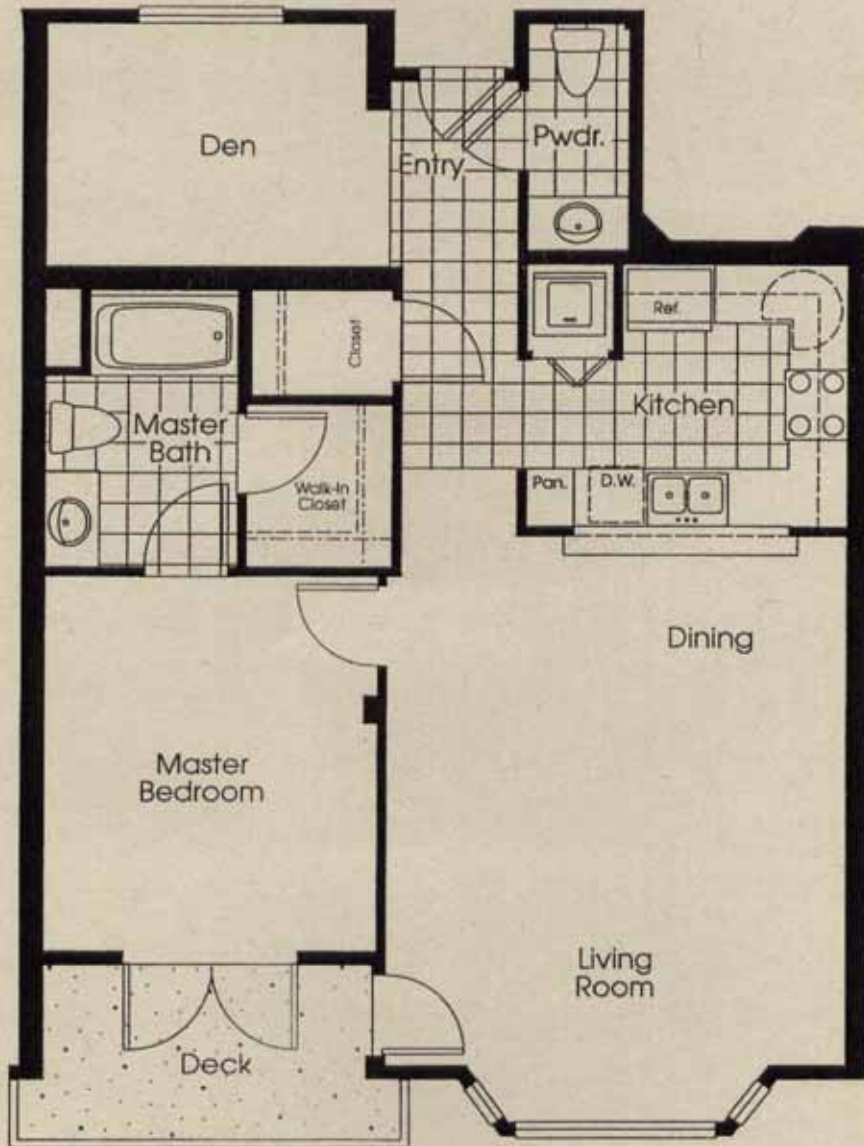


Unit 5

205, 305, 405, 505, 505, 605

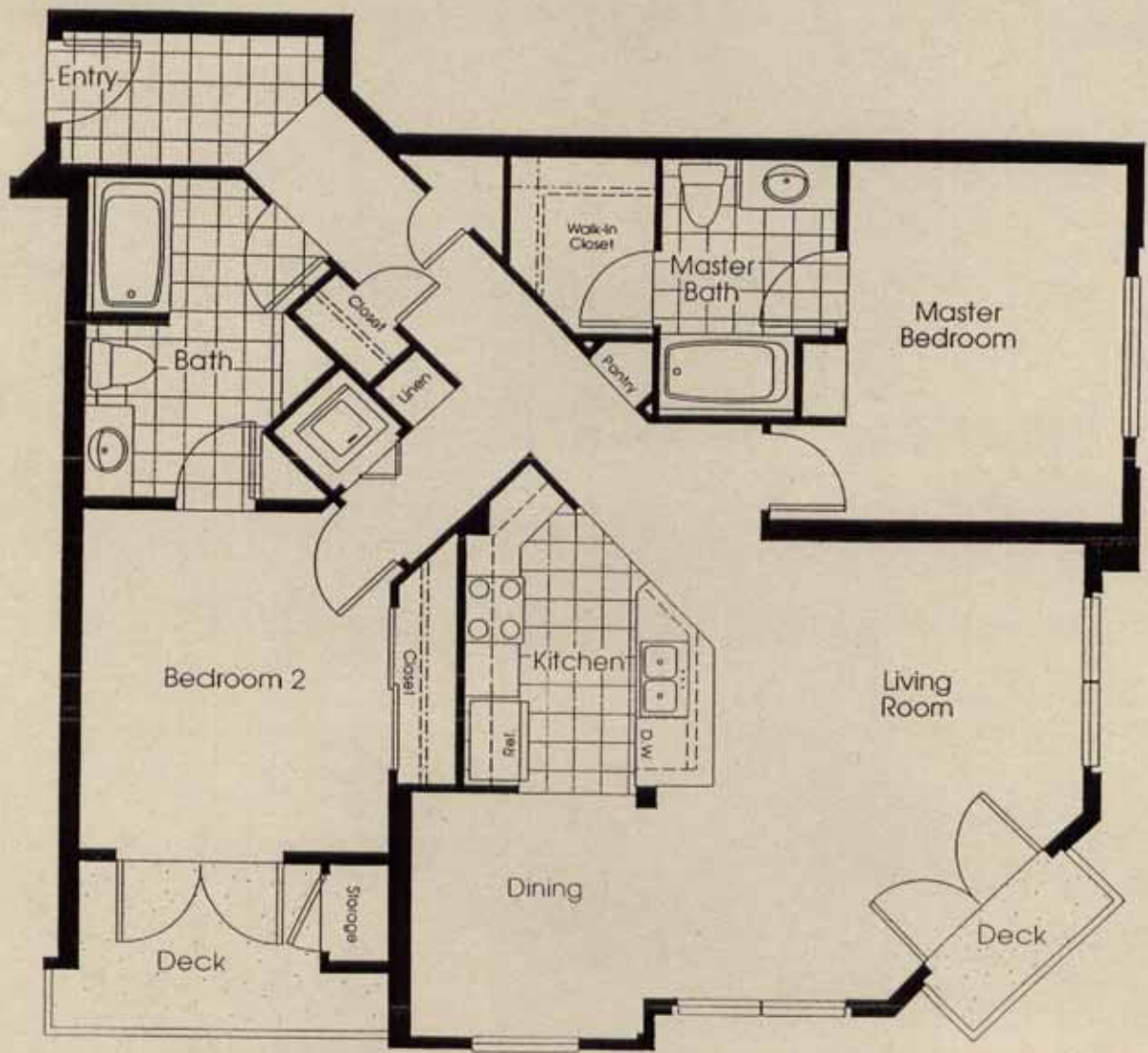


Unit 6
206, 306, 406, 506, 606

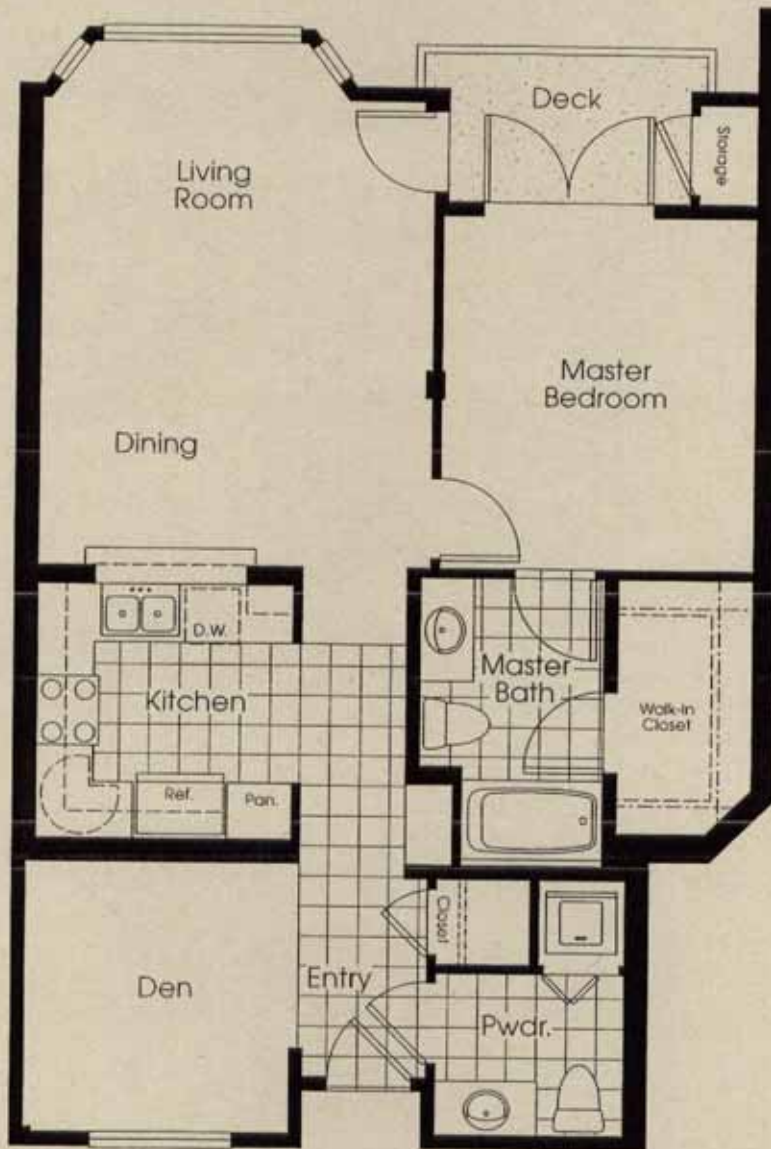


Unit 7

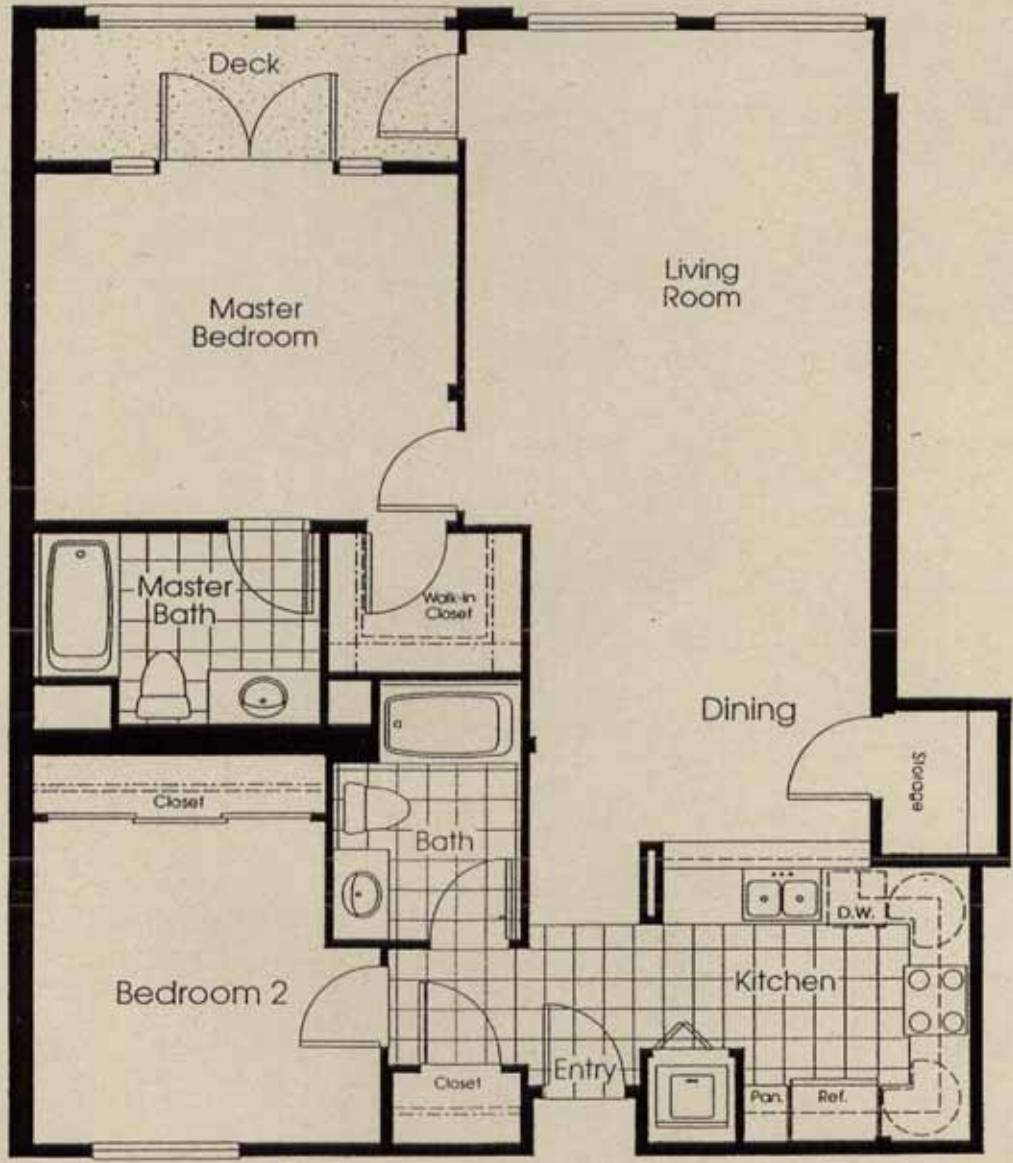
207, 307, 407, 507, 607



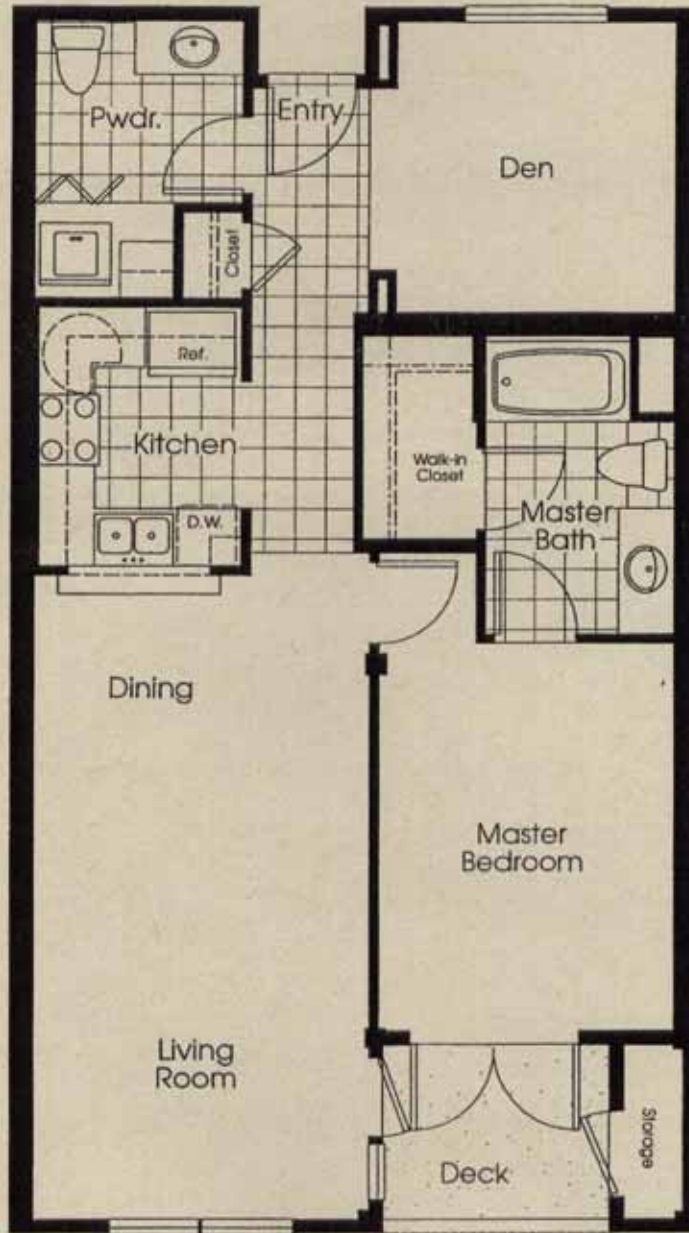
Unit 8
208, 308, 408, 508, 608



Unit 9
209, 309, 409, 509, 609

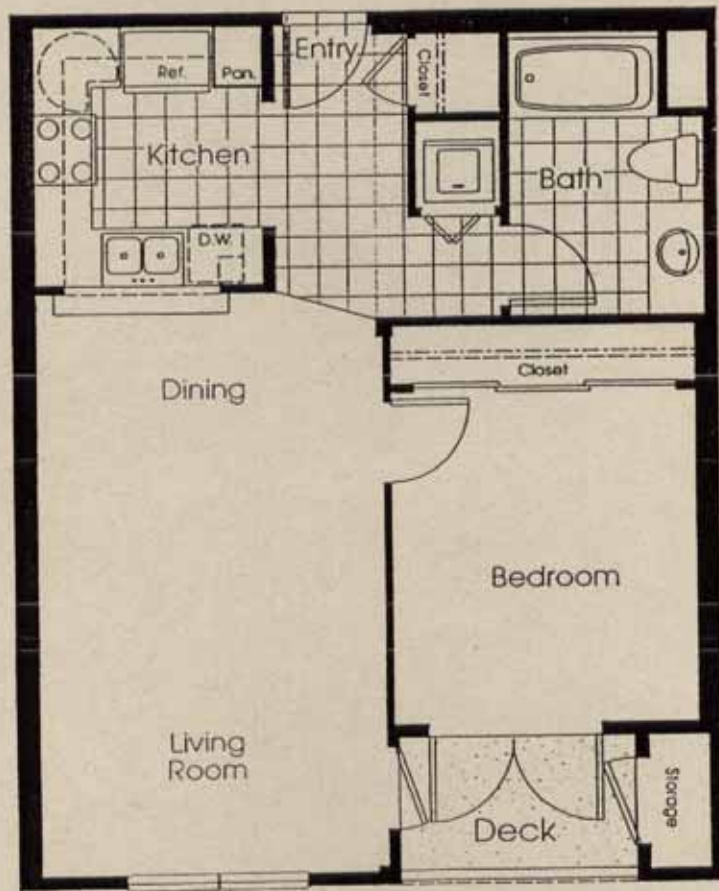


Unit 10
210, 310, 410, 510, 610



Unit 11

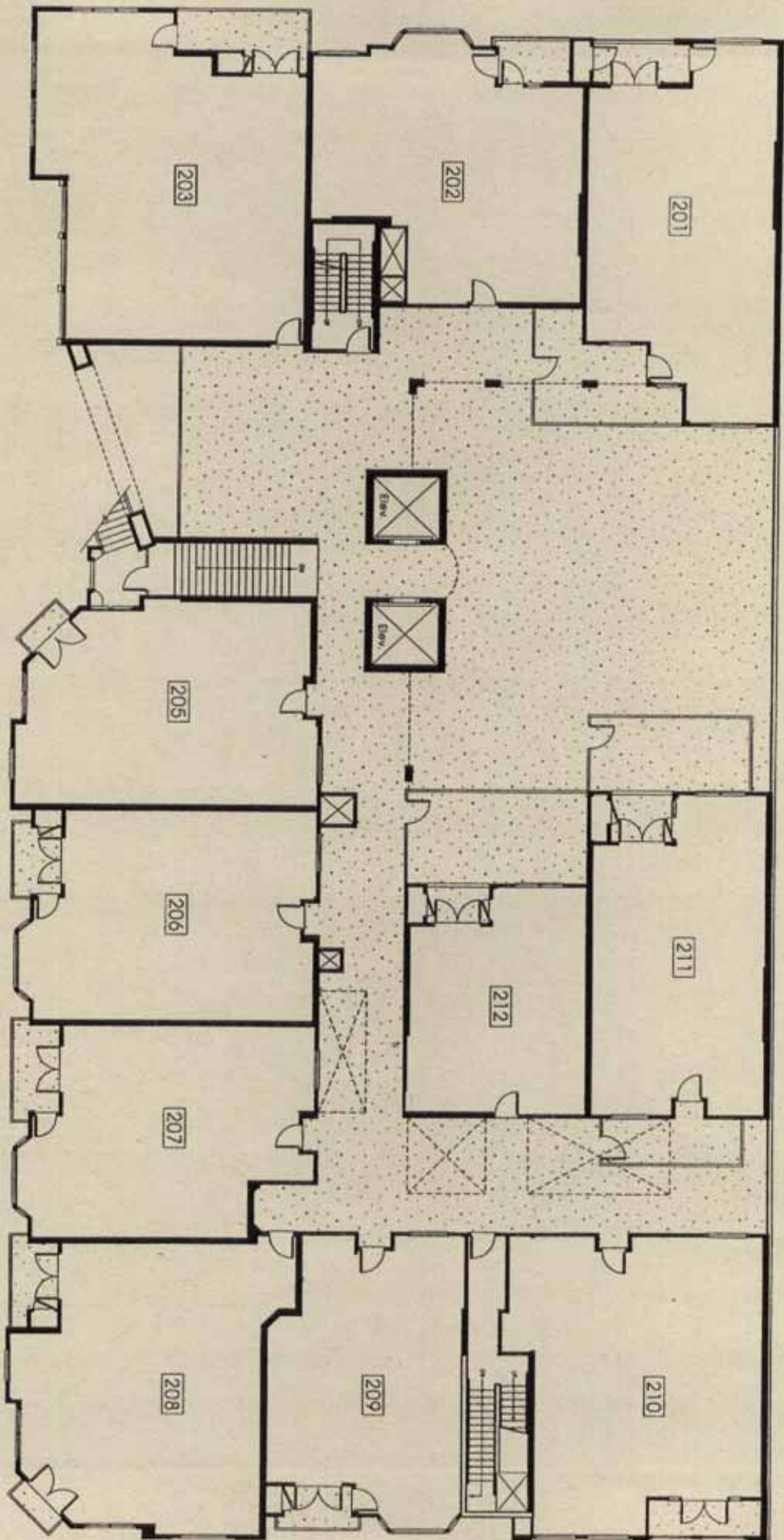
211, 311, 411, 511, 611



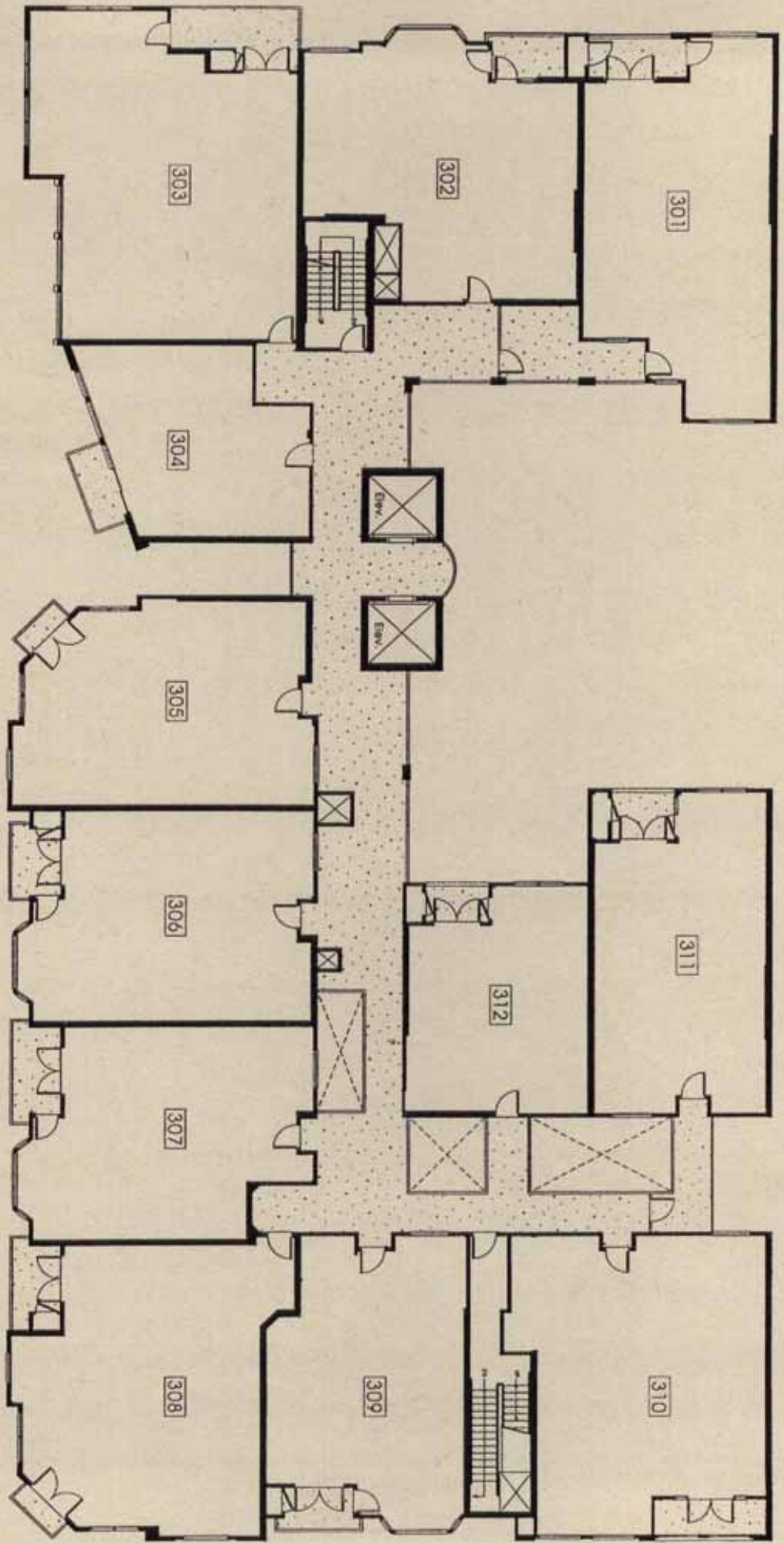
Unit 12

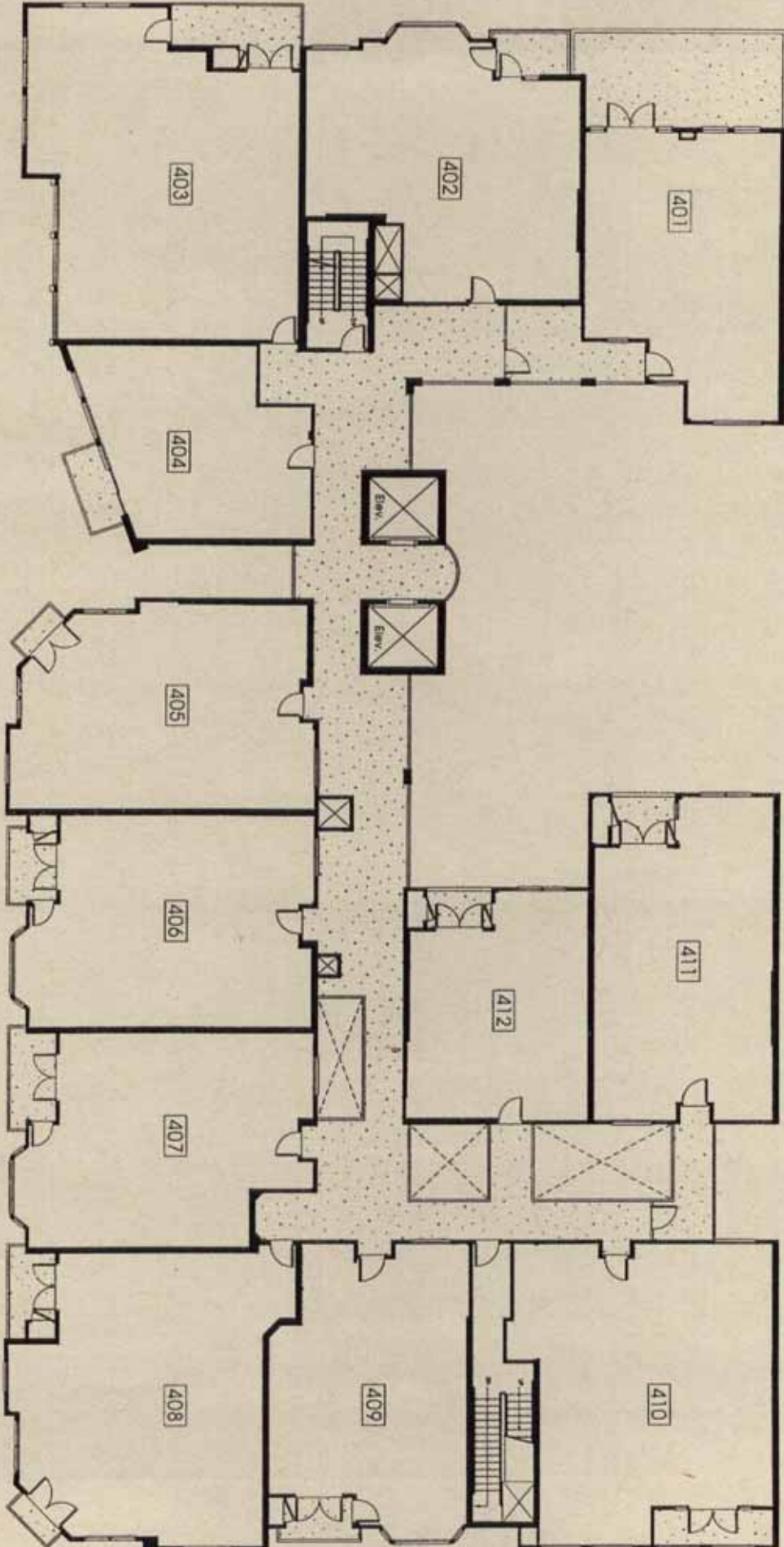
212, 312, 412, 512, 612

Level 2



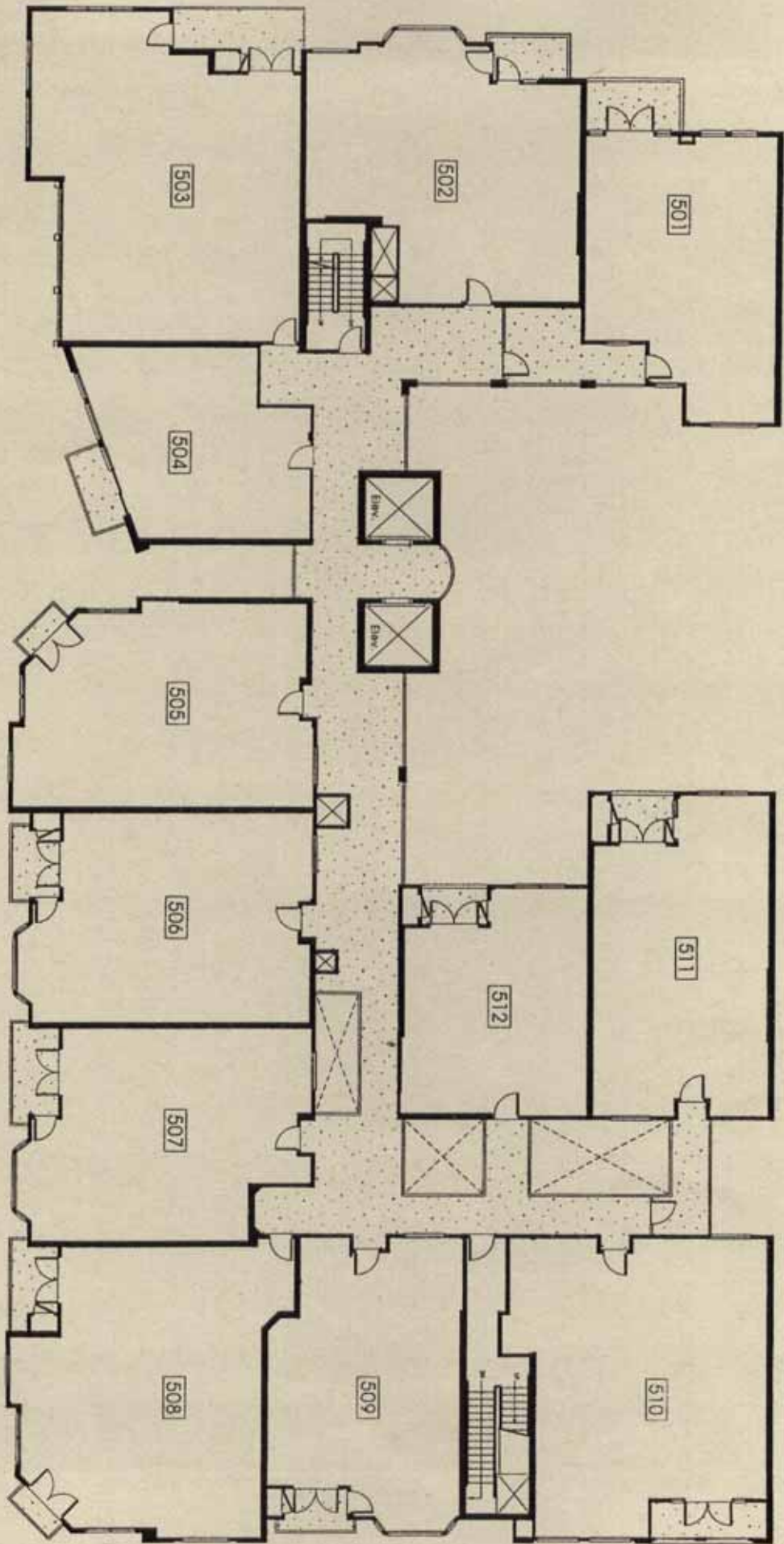
Level 3





Level 4





Level 5



Level 6

