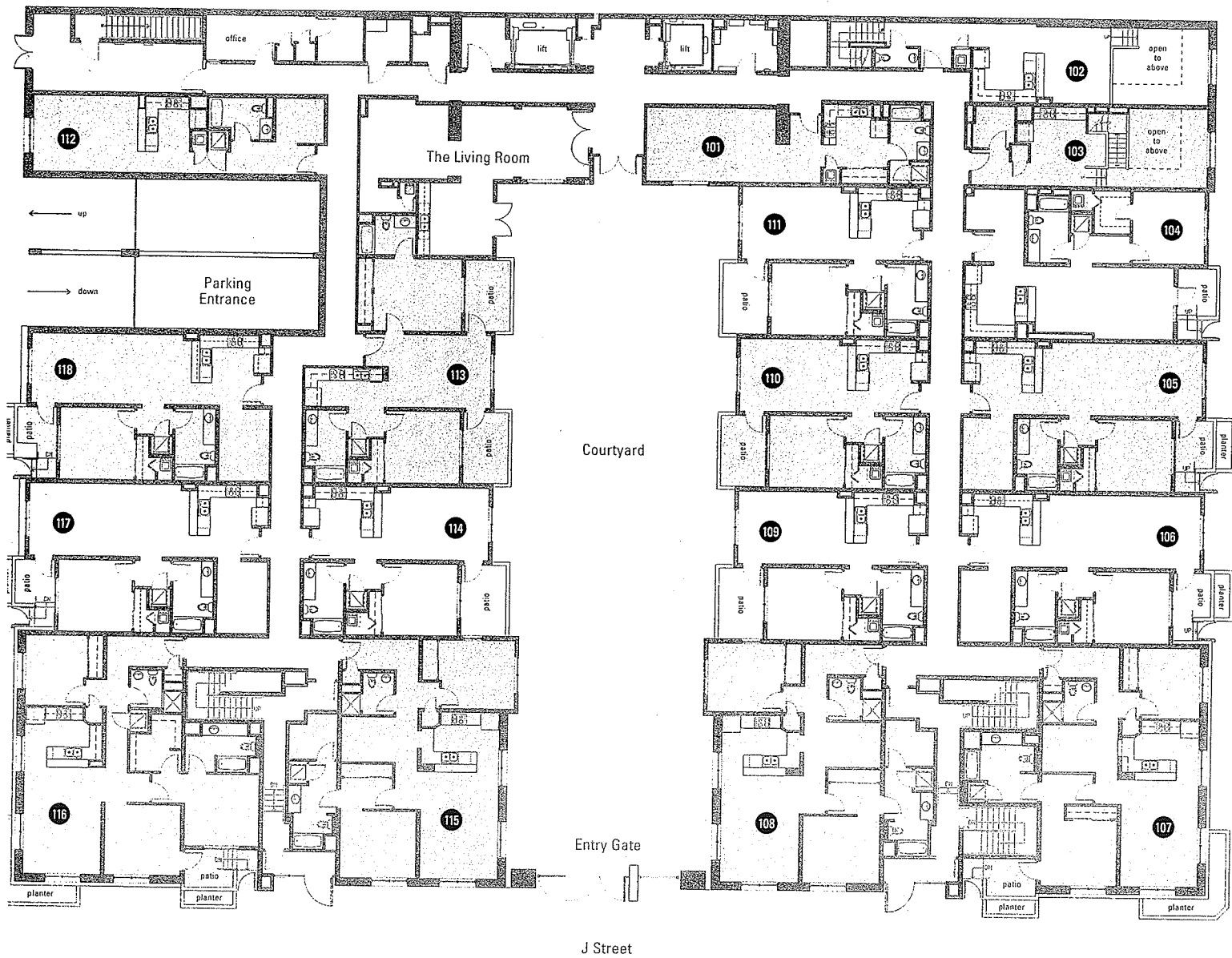


[ FIFTH THROUGH EIGHTH LEVEL FLOORPLAN

## [ the great beyond ]

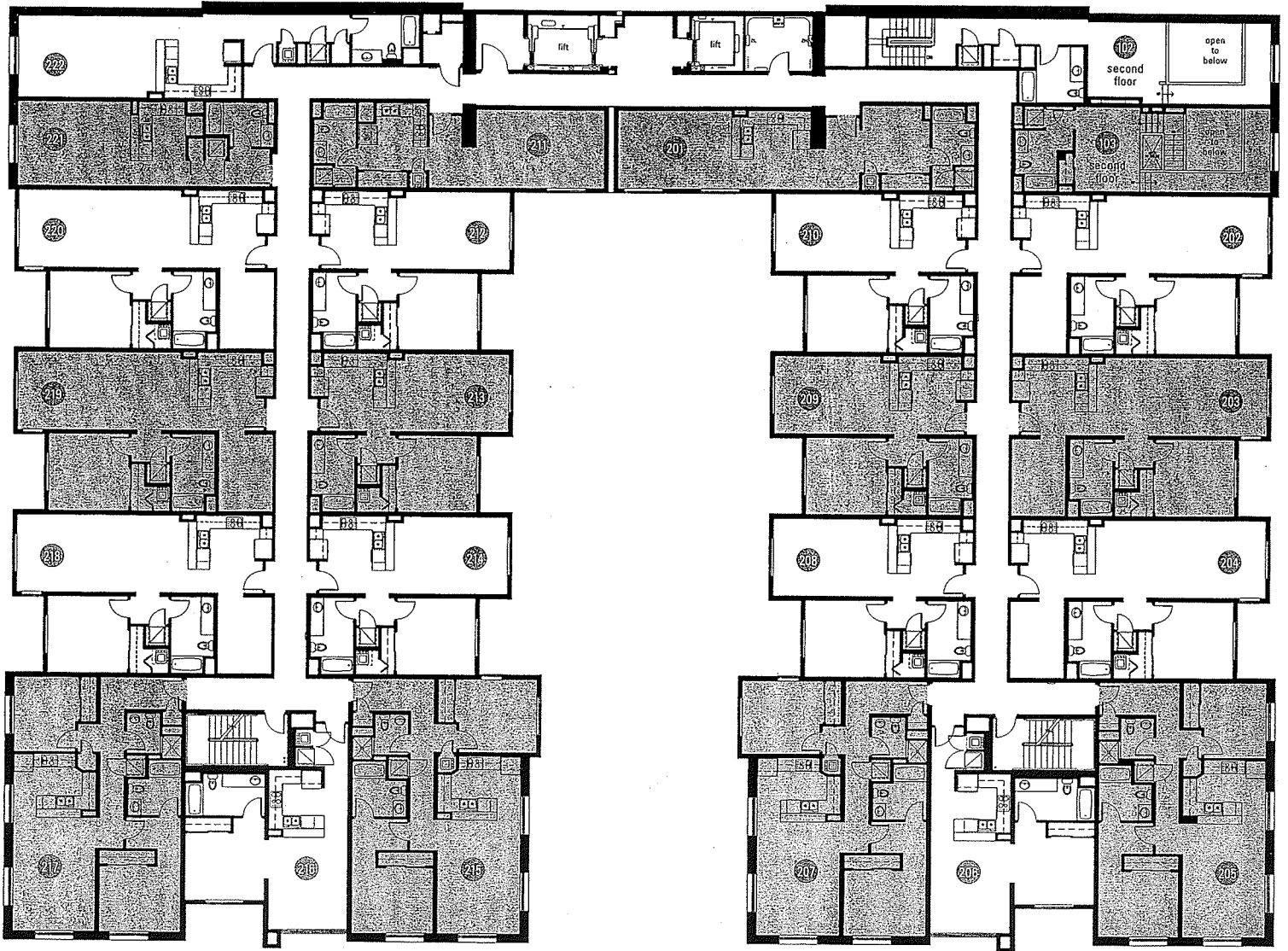
As if downtown didn't twinkle enough, the views around Metrome also include the bay, ballpark and Coronado Bridge. By day, the scenery gleams SoCal sunshine and business a-go-go. By night, it's a grab bag of the tuft and tousled. But the most incredible views by far are seen when someone forgets to draw the shades.



[ FIRST LEVEL FLOORPLAN ]

# netrôme ]

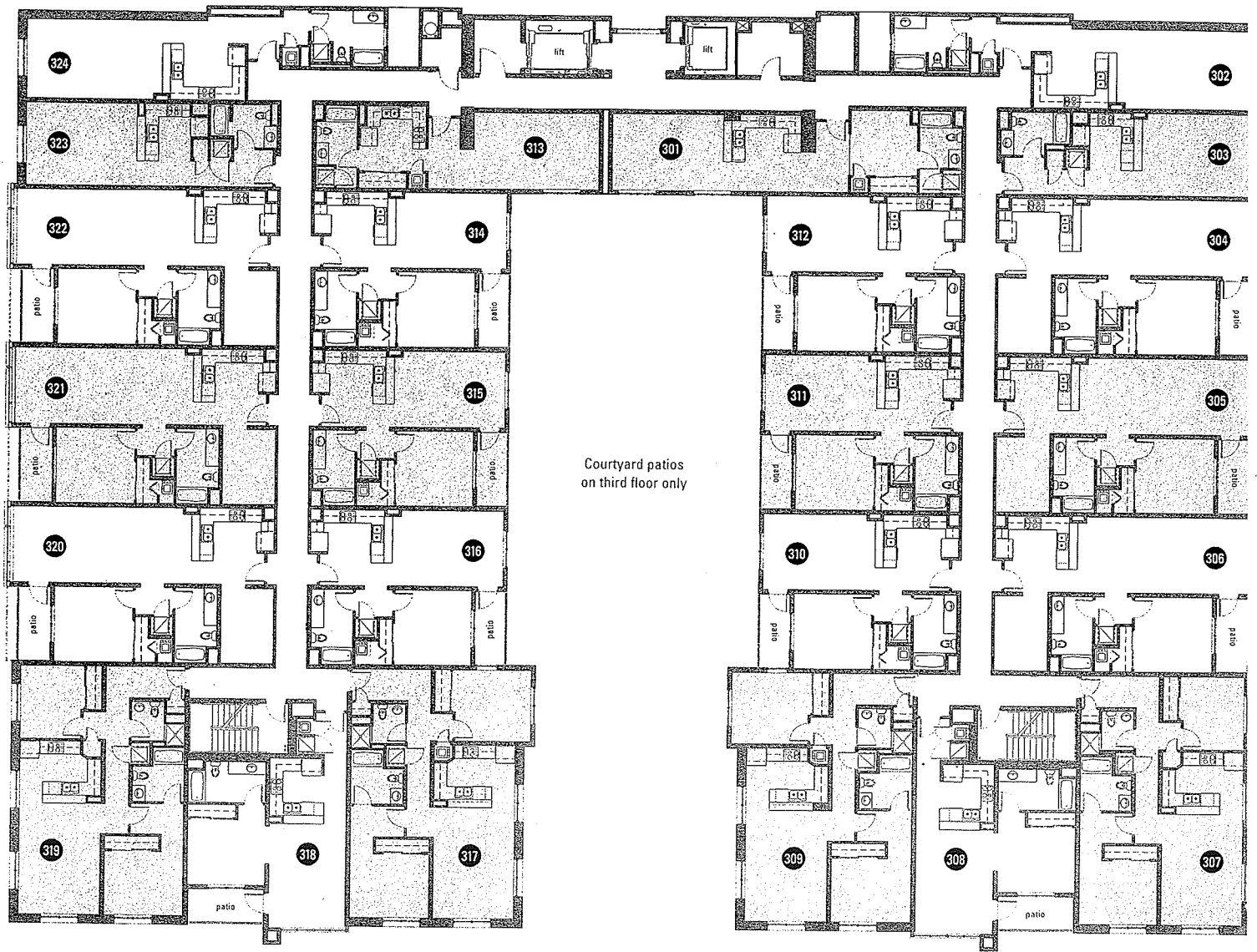
Cool new downtown digs at a price you can totally handle. 8 stories located on the corner of J, between 11th and Park (12th), soon to be the avenue that links San Diego Bay to Balboa Park. It's a hop, skip and a jump to the trolley, a mere wave of the hand for a taxi or take your own wheels parked safe and sound in the underground lot.



[ SECOND LEVEL FLOORPLAN ]

## the inside ]

Ranging from 650 to 1,450 square feet, 17 different floorplans offer loft, one and two-bedroom homes. Designs feature granite countertops and slate flooring, many with floor-to-ceiling windows. Workout people will appreciate the fitness room, and chill-out people will appreciate The Living Room – a BYOB lobby bar for residents, complete with everything you'll need to mix, stir, shake and pour.



[ THIRD THROUGH FOURTH LEVEL FLOORPLAN

## [ the outside ]

The fusion of zinc, brick and concrete is your first clue that the architecture is part old warehouse, part new urbanism. Thick concrete walls keep your parties under wraps and people living on the ground floor along 11th, Park (12th) and J will enjoy private patios with their very own street entrances. Behind the front entry gate you'll find a long stone path leading past the fountain to the outdoor bamboo rooms. Can you say ommm?