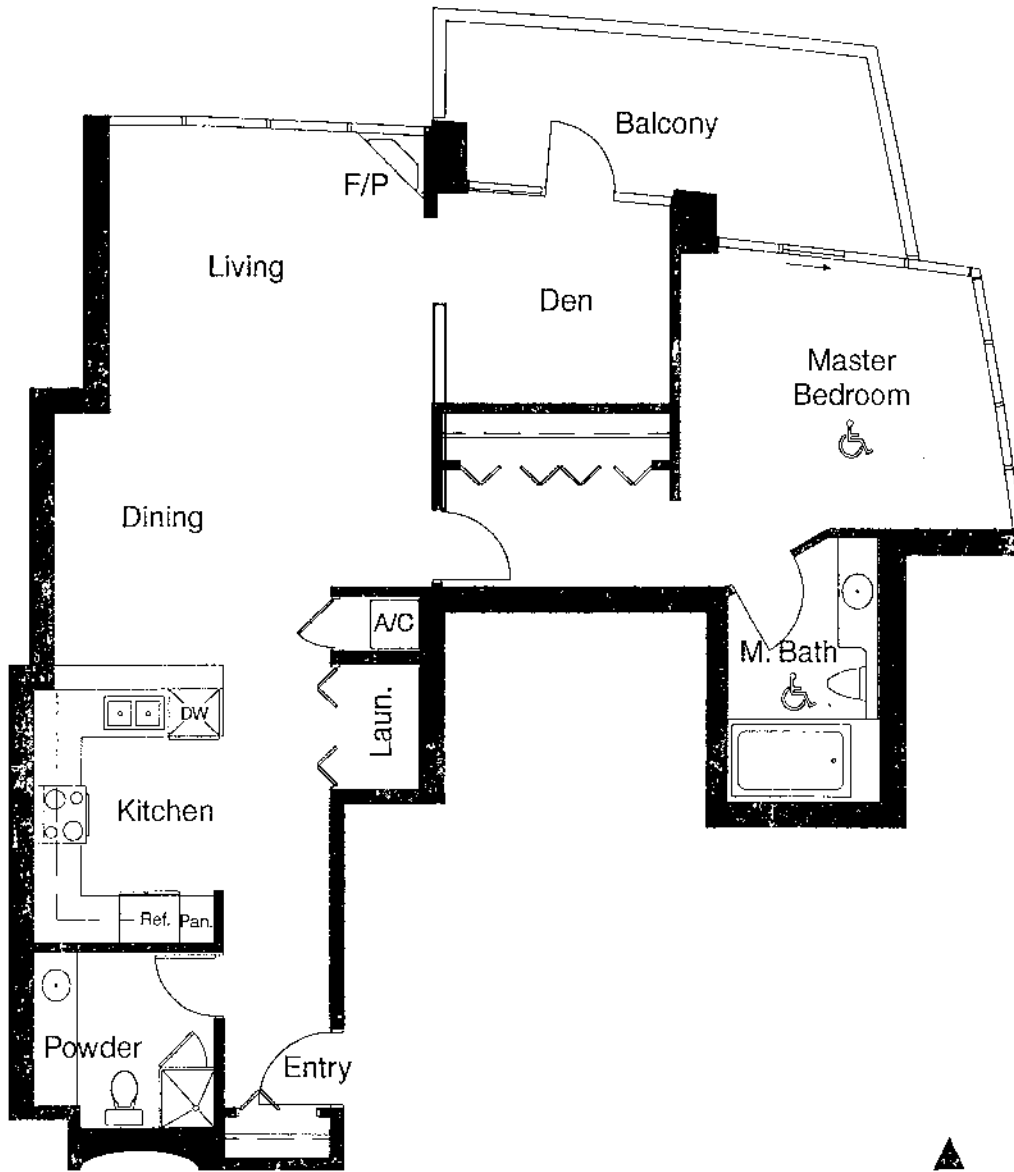


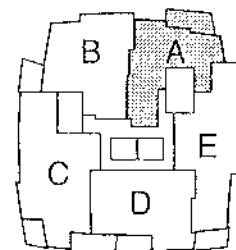
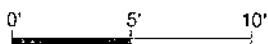


# HORIZONS

MARINA DISTRICT



**Plan A**  
 1 Bedroom & Den  
 1,036 sq.ft. (approximate)



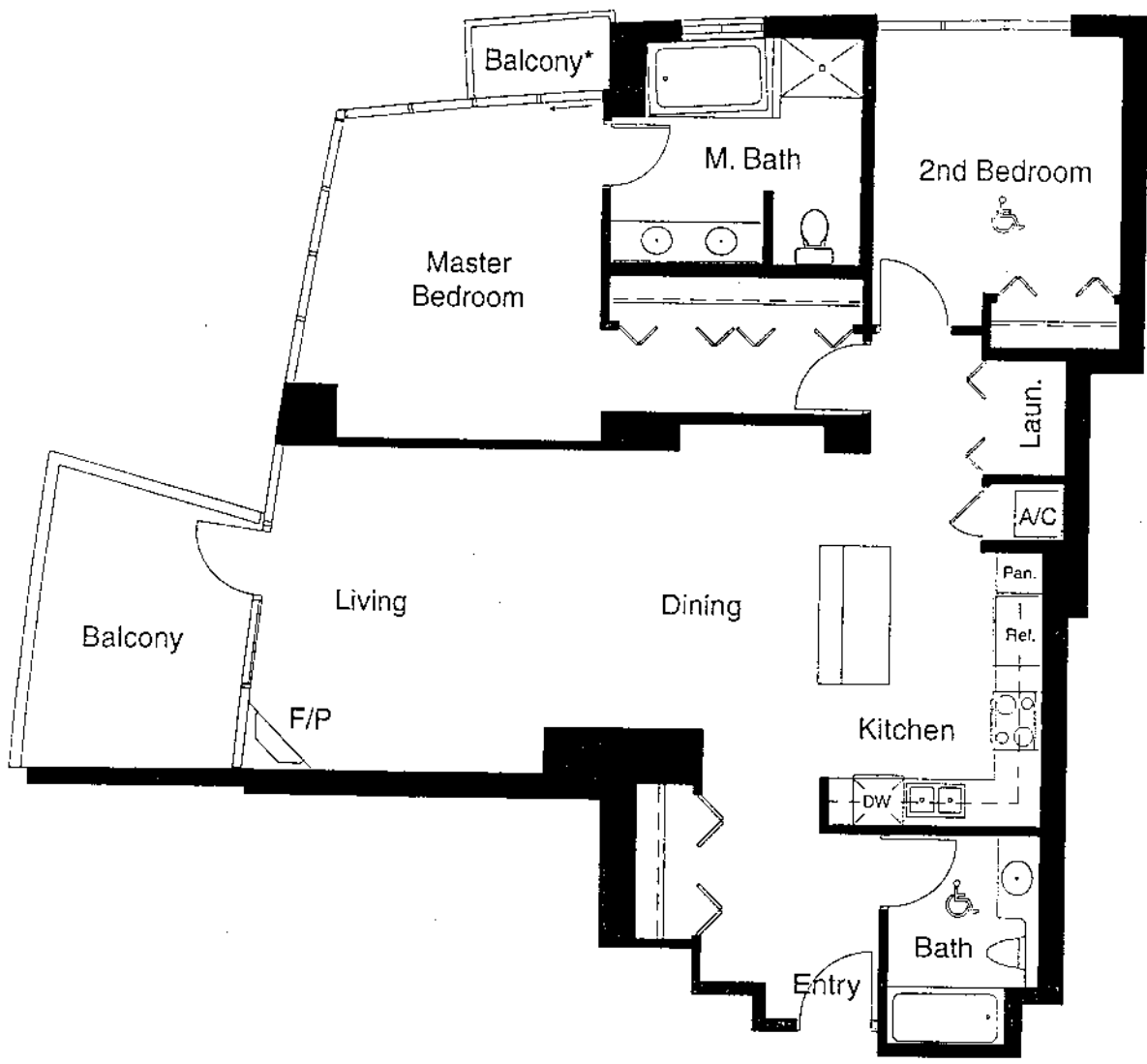
#301 to #1701

The builder reserves the right to change floor plans, elevations, specifications and prices without notice. Square footages as noted are approximations of each individual unit. The Purchaser is responsible for verification of the unit layout & square footage. All renderings, floor plans and maps are artist's conceptions and are not intended to be an actual depiction of buildings, driveways or landscaping. Floor plans vary. Ask a Horizons sales person for details.

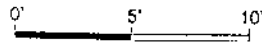


# HORIZONS

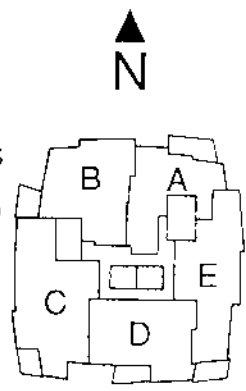
MARINA DISTRICT



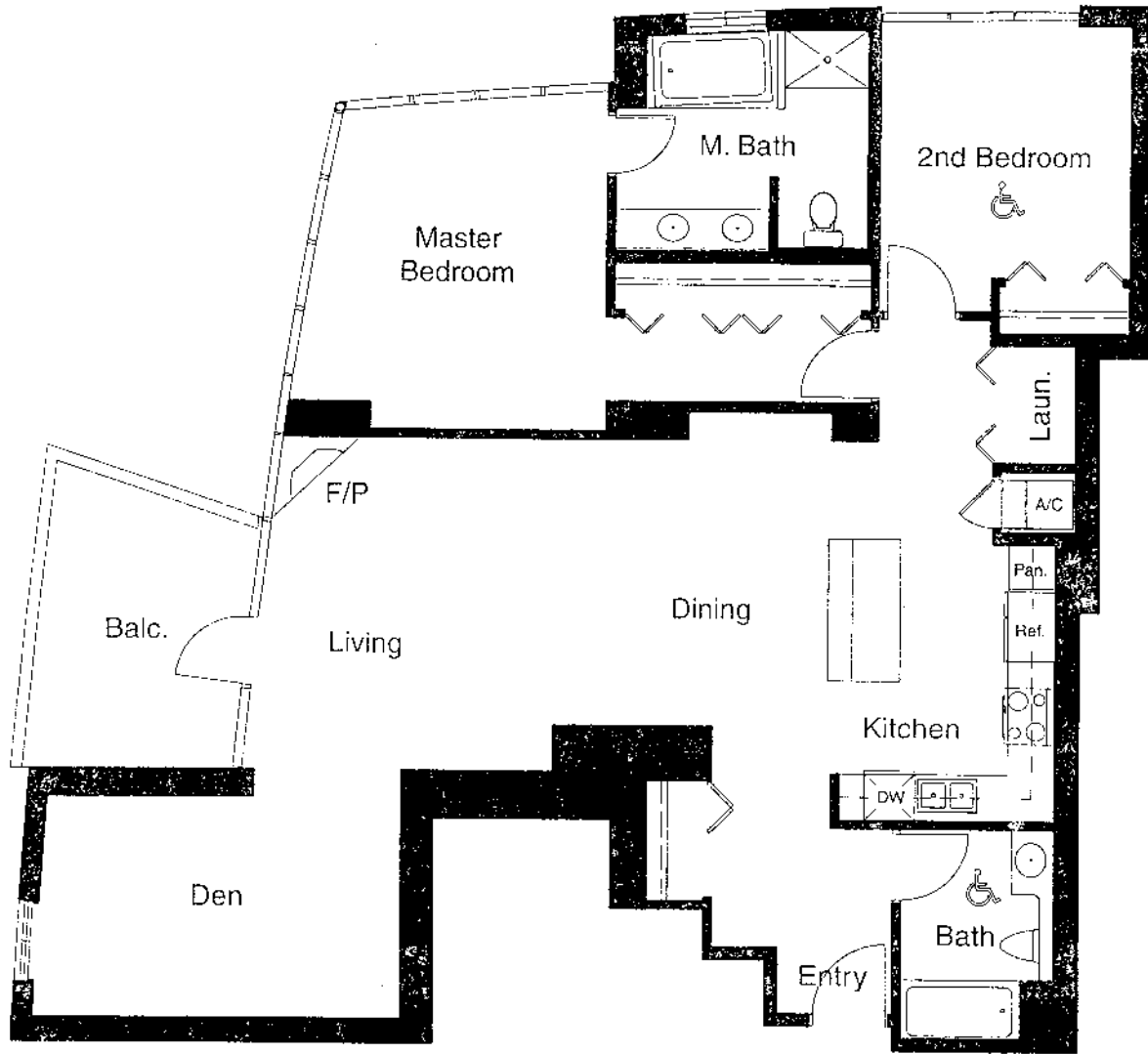
**Plan B**  
 2 Bedroom  
 1,245 sq.ft. (approximate)



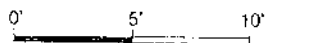
#305 to #1705  
 \*Balcony off  
 Master Bedroom on  
 Levels 3 to 15 only.



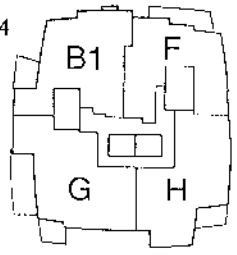
The builder reserves the right to change floor plans, elevations, specifications and prices without notice. Square footages as noted are approximations of each individual unit. The Purchaser is responsible for verification of the unit layout & square footage. All renderings, floor plans and maps are artist's conceptions and are not intended to be



**Plan B1**  
 2 Bedroom & Den  
 1,393 sq.ft. (approximate)



#1804 to #1904

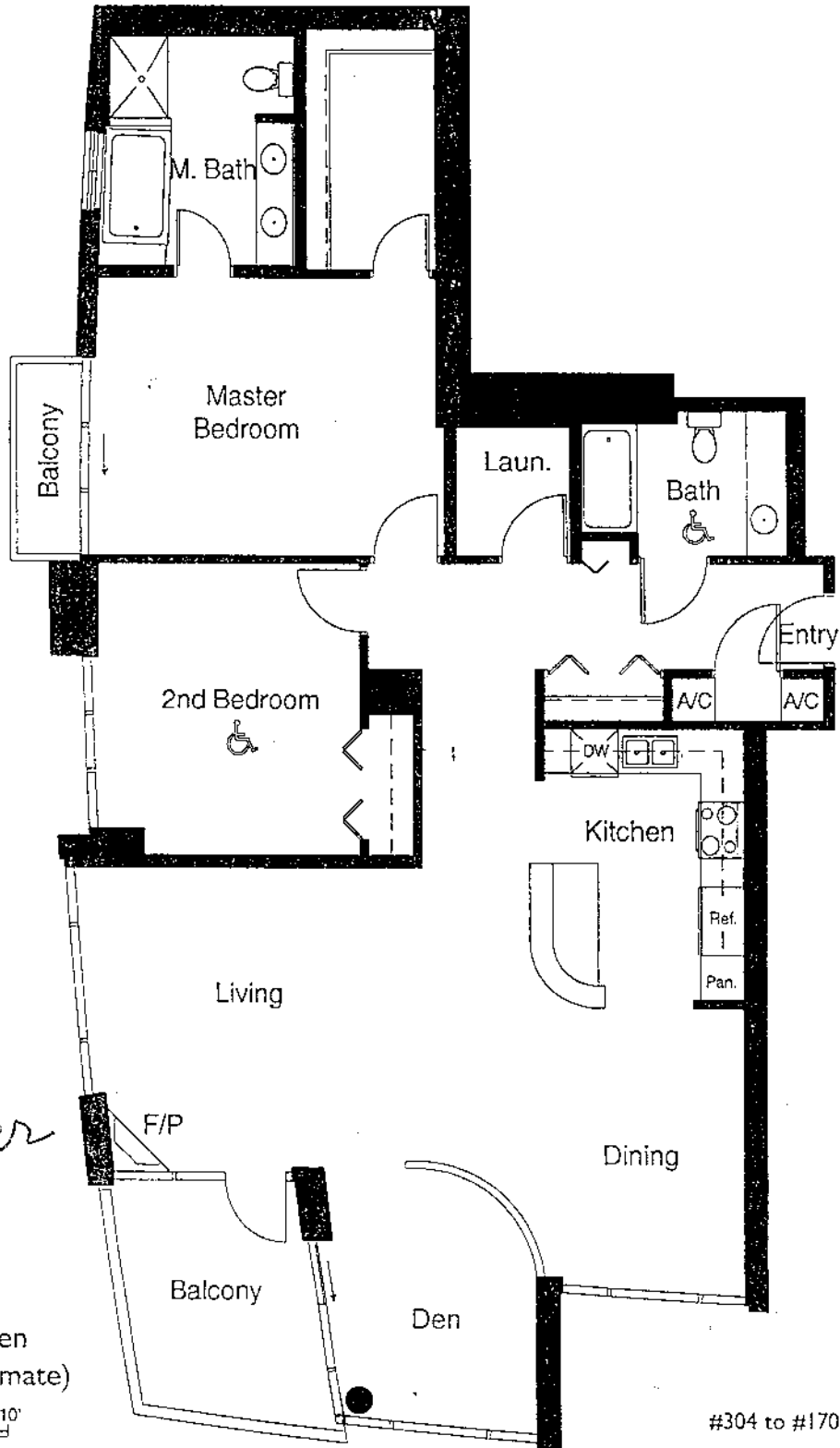


The builder reserves the right to change floor plans, elevations, specifications and prices without notice. Square footages as noted are approximations of each individual unit. The Purchaser is responsible for verification of the unit layout & square footage. All renderings, floor plans and maps are artist's conceptions and are not intended to be an actual depiction of buildings, driveways or landscaping. Floor plans vary. Ask a Horizons sales person for details.



# HORIZONS

MARINA DISTRICT

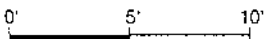


*9th floor - South Tower*

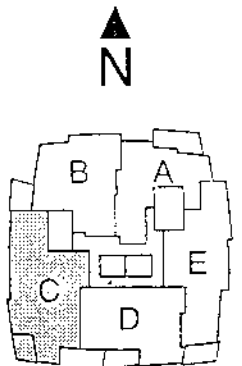
### Plan C

2 Bedroom & Den

1,544 sq.ft. (approximate)



#304 to #1704

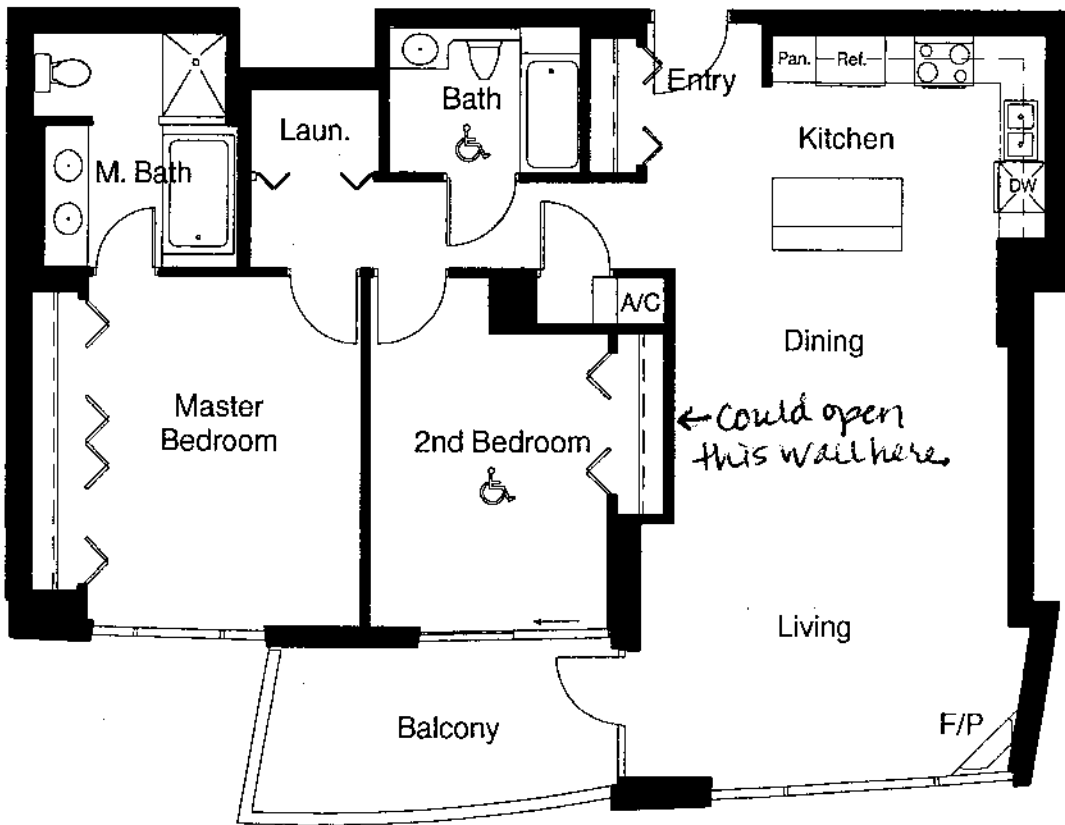


The builder reserves the right to change floor plans, elevations, specifications and prices without notice. Square footages as noted are approximations of each individual unit. The Purchaser is responsible for verification of the unit layout & square footage. All renderings, floor plans and maps are artist's conceptions and are not intended to be



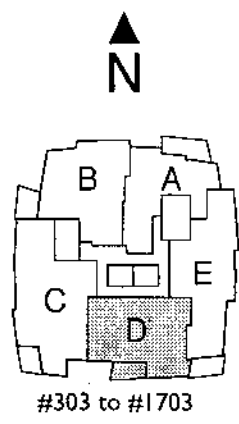
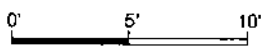
# HORIZONS

MARINA DISTRICT



*13th floor - South Tower*

**Plan D**  
 2 Bedroom  
 1,215 sq.ft. (approximate)



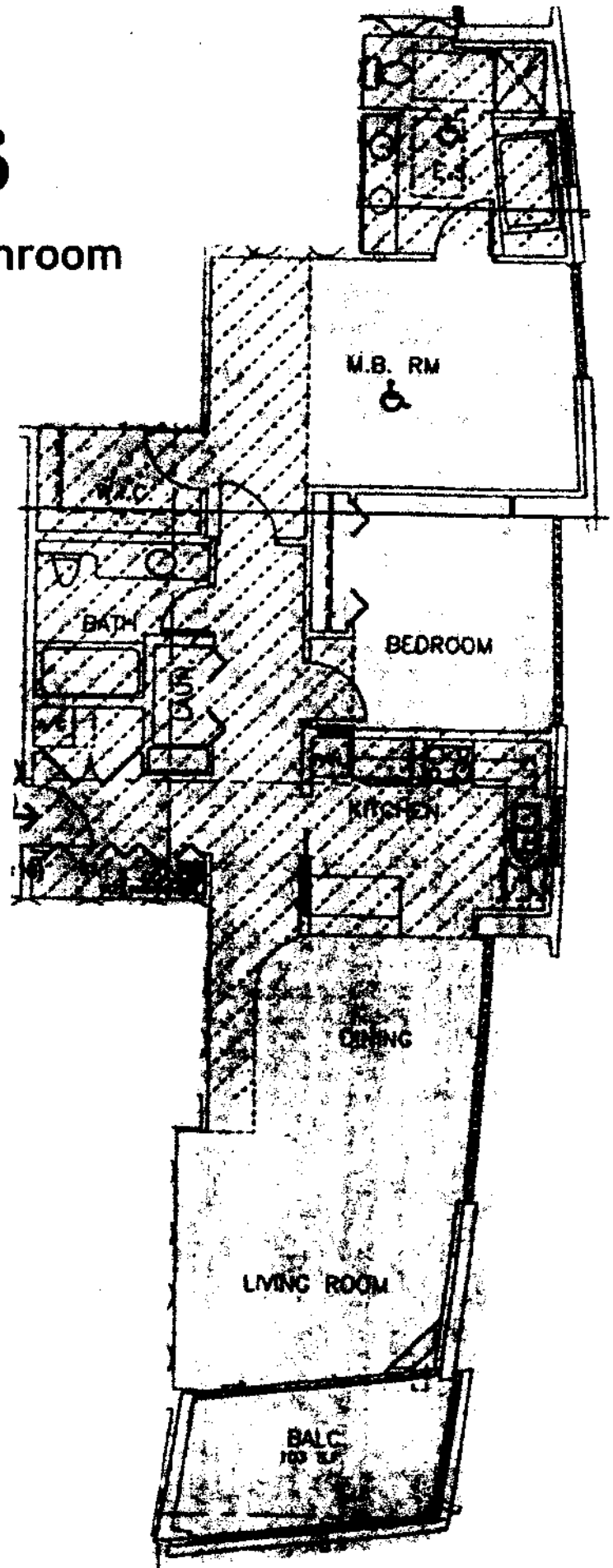
The builder reserves the right to change floor plans, elevations, specifications and prices without notice. Square footages as noted are approximations of each individual unit. The Purchaser is responsible for verification of the unit layout & square footage. All renderings, floor plans and maps are artist's conceptions and are not intended to be an actual depiction of buildings, driveways or landscaping. Floor plans vary. Ask a Horizons sales person for details.

# Horizons

Plan E - 2 Bedroom, 2 Bathroom

Orientation: Southeast

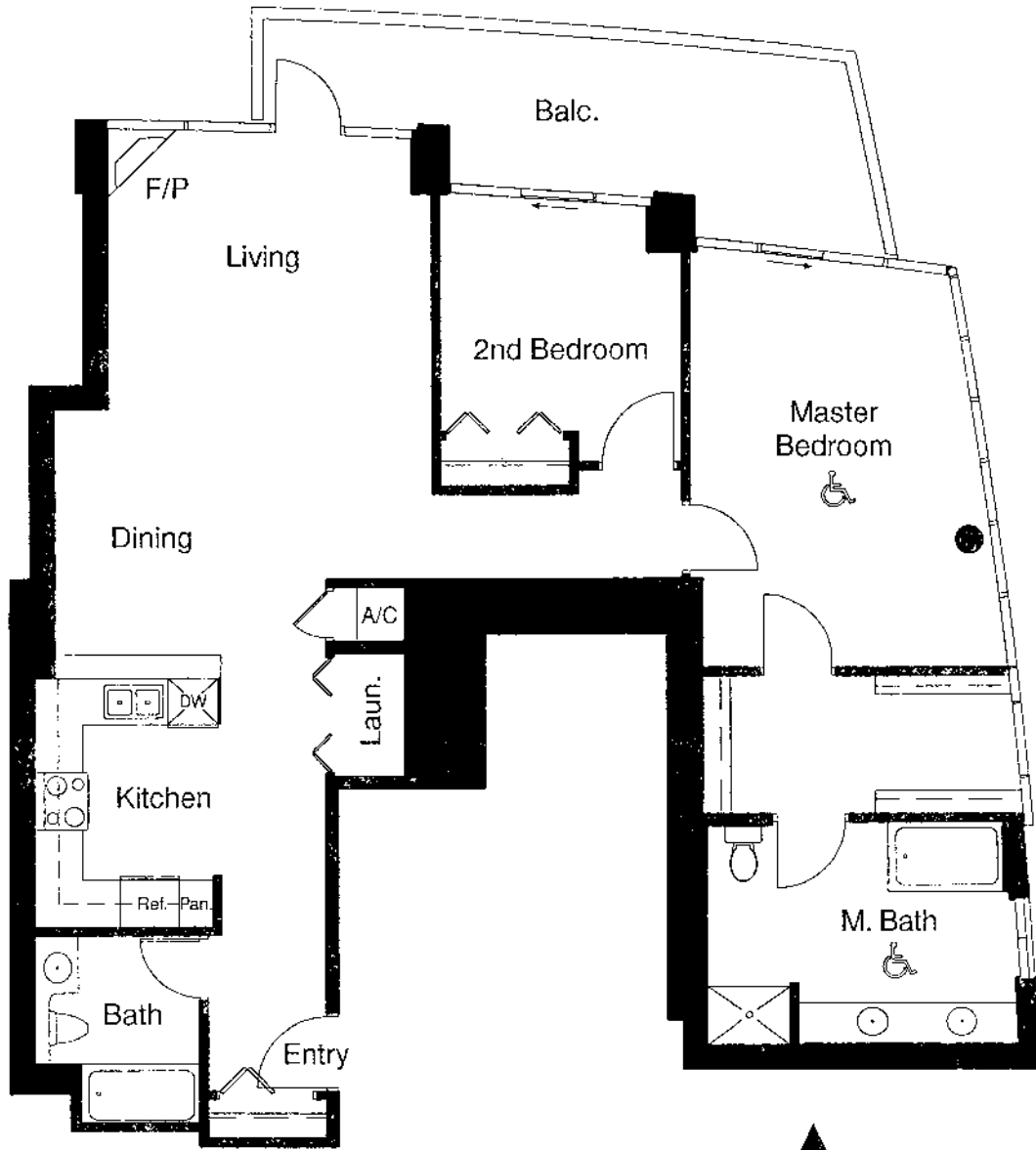
1,301 esf



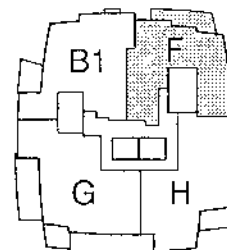


# HORIZONS

MARINA DISTRICT

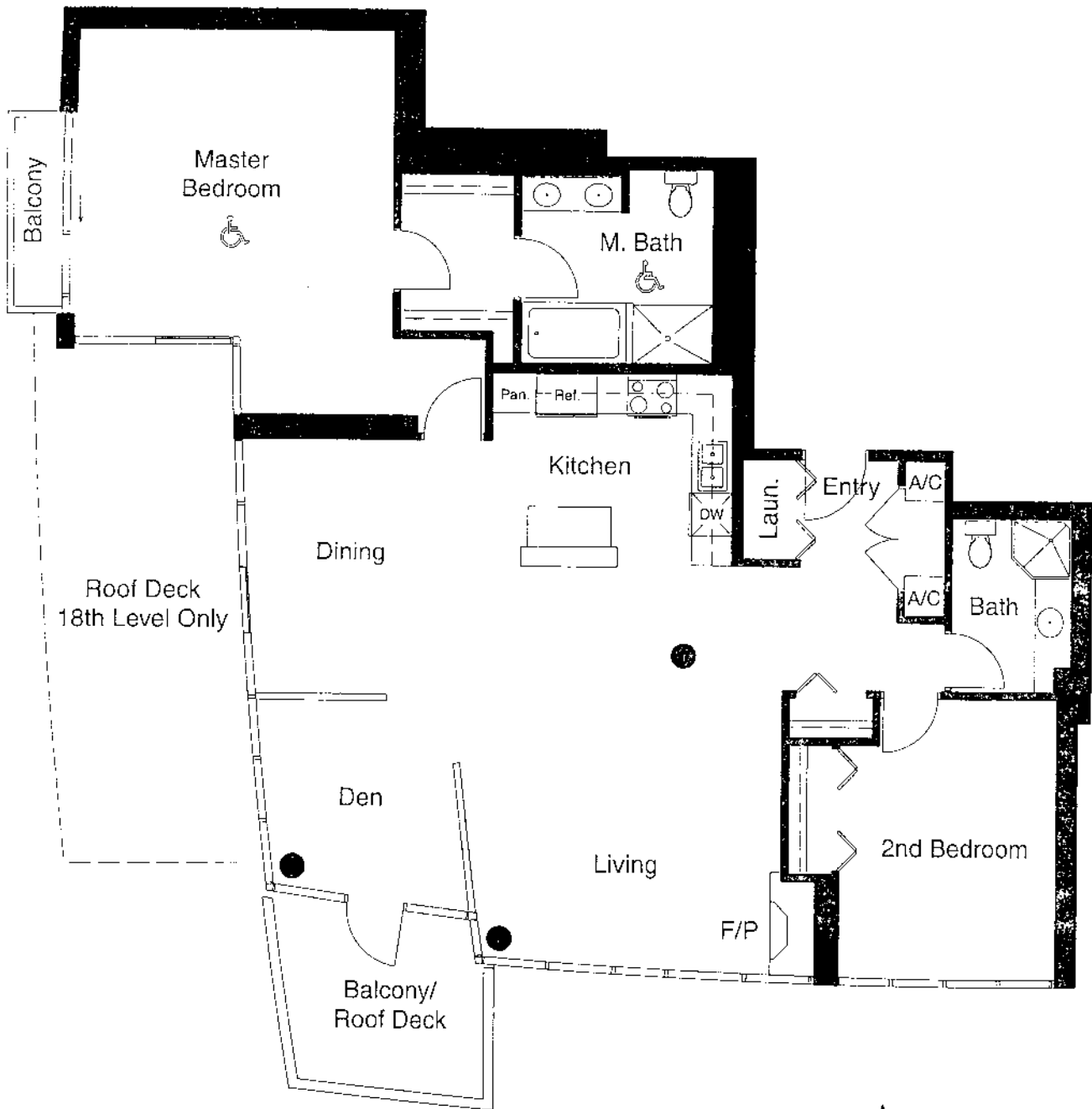


**Plan F**  
 2 Bedroom  
 1,263 sq.ft. (approximate)

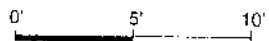


#1801 to #2301

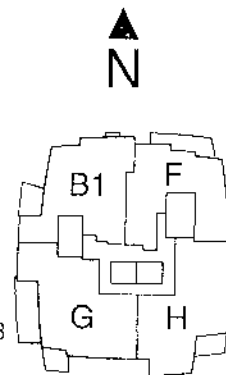
The builder reserves the right to change floor plans, elevations, specifications and prices without notice. Square footages as noted are approximations of each individual unit. The Purchaser is responsible for verification of the unit layout & square footage. All renderings, floor plans and maps are artist's conceptions and are not intended to be an actual depiction of buildings, driveways or landscaping. Floor plans vary. Ask a Horizons sales person for details.



**Plan G**  
 2 Bedroom & Den  
 1,530 sq.ft. (approximate)

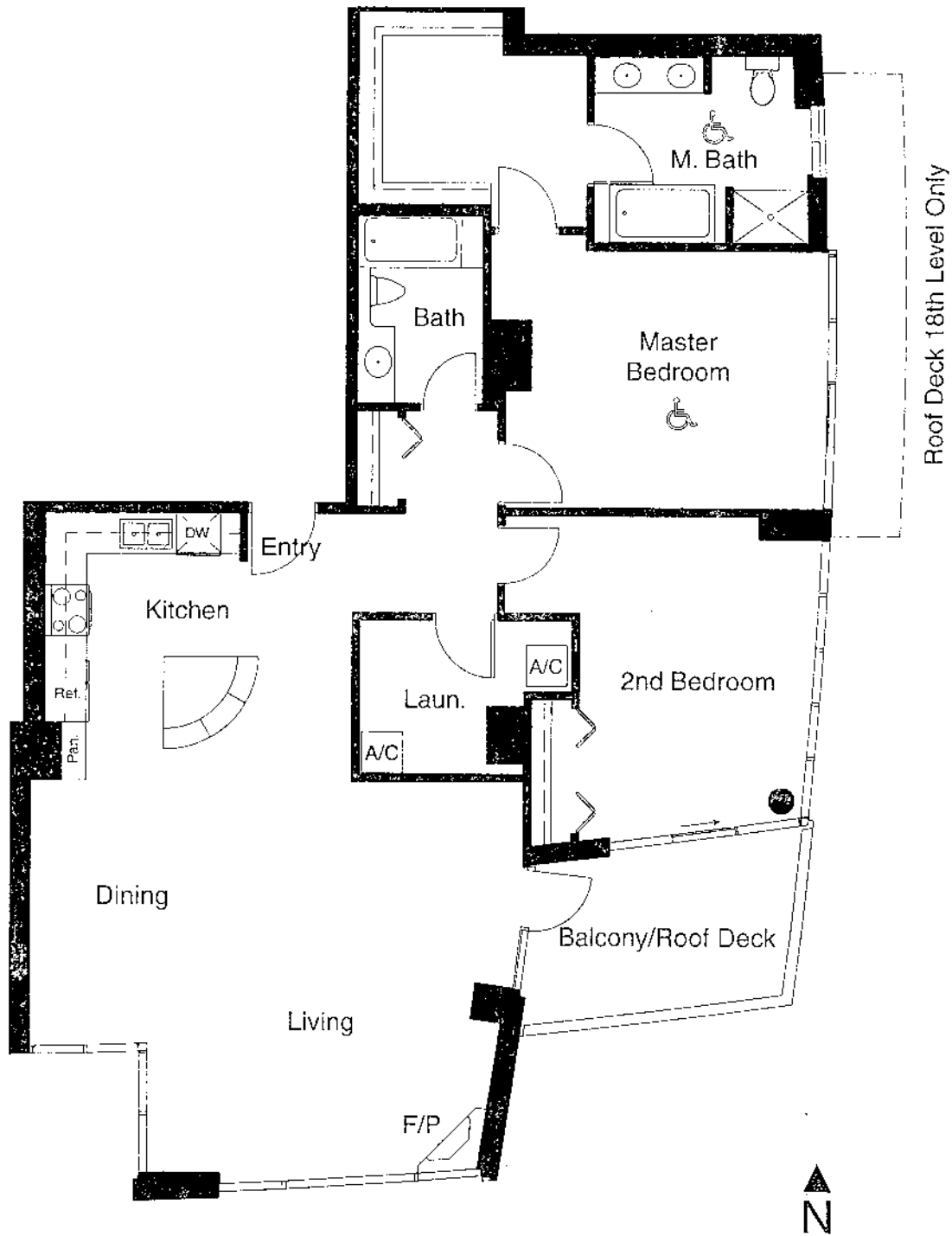


#1803 to #1903

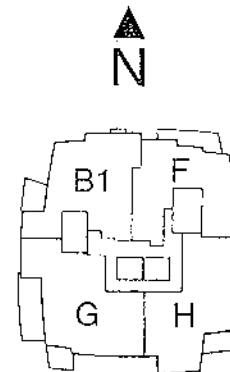
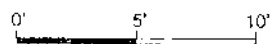


The builder reserves the right to change floor plans, elevations, specifications and prices without notice. Square footages as noted are approximations of each individual unit. The Purchaser is responsible for verification of the unit layout & square footage. All renderings, floor plans and maps are artist's conceptions and are not intended to be an actual depiction of buildings, driveways or landscaping. Floor plans vary. Ask a Horizons sales person for details.





**Plan H**  
 2 Bedroom  
 1,497 sq.ft. (approximate)



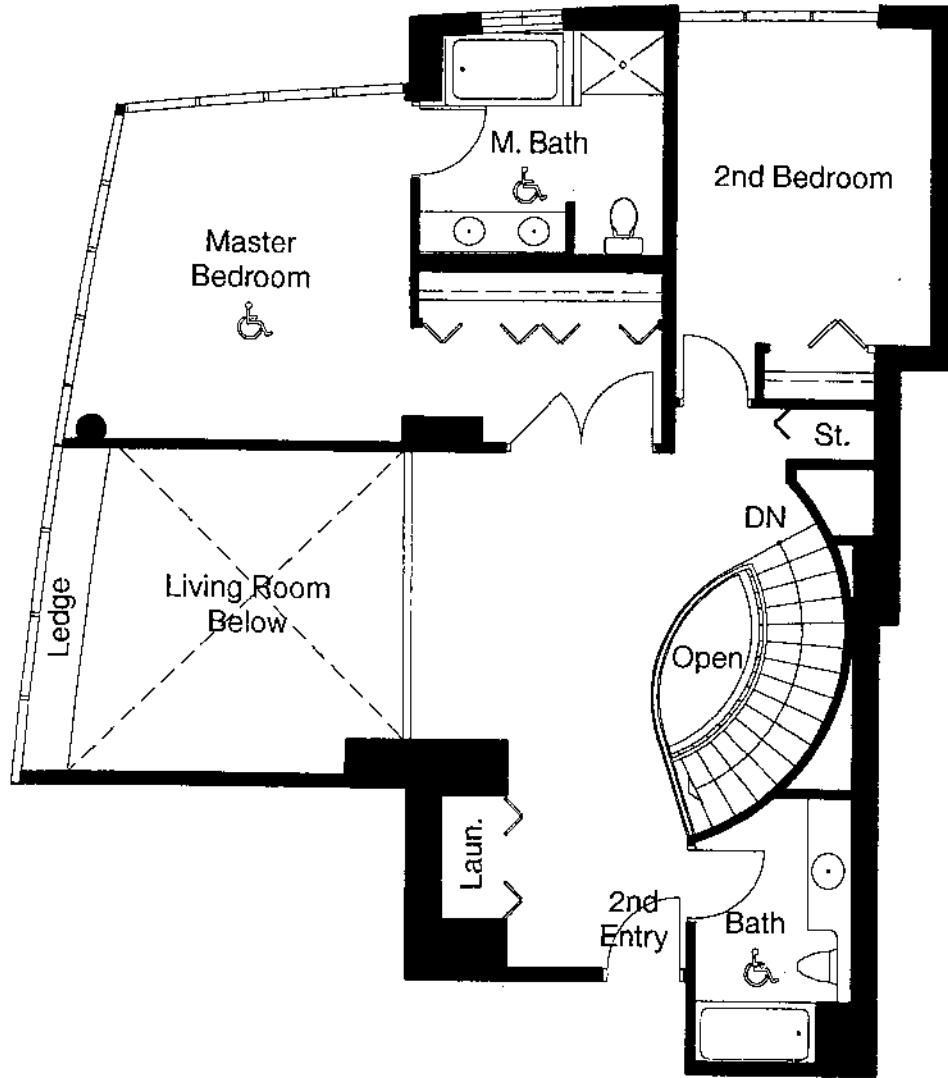
#1802 to #1902

The builder reserves the right to change floor plans, elevations, specifications and prices without notice. Square footages as noted are approximations of each individual unit. The Purchaser is responsible for verification of the unit layout & square footage. All renderings, floor plans and maps are artist's conceptions and are not intended to be an actual depiction of buildings, driveways or landscaping. Floor plans vary. Ask a Horizons sales person for details.



# HORIZONS

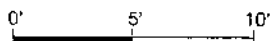
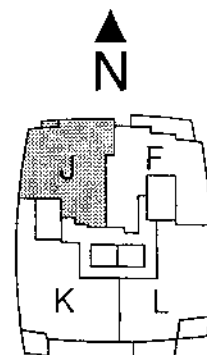
MARINA DISTRICT



Second Level

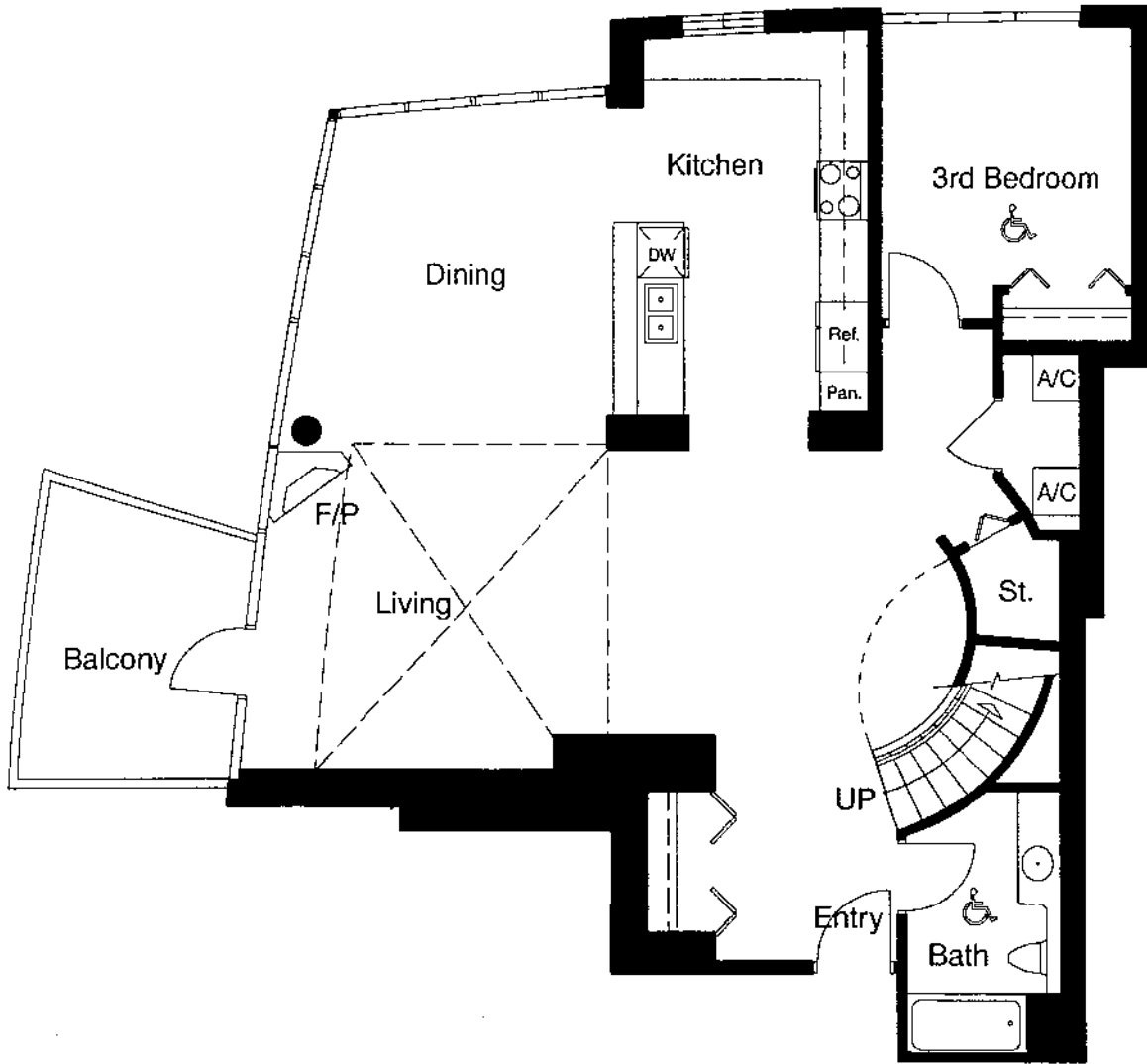
**Plan J - Two Level**  
 3 Bedroom  
 2,267 sq.ft. (approximate)

#2004 to #2204





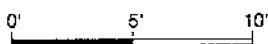
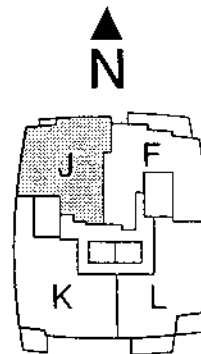
**HORIZONS**  
MARINA DISTRICT



Main Level

**Plan J - Two Level**  
3 Bedroom  
2,267 sq.ft. (approximate)

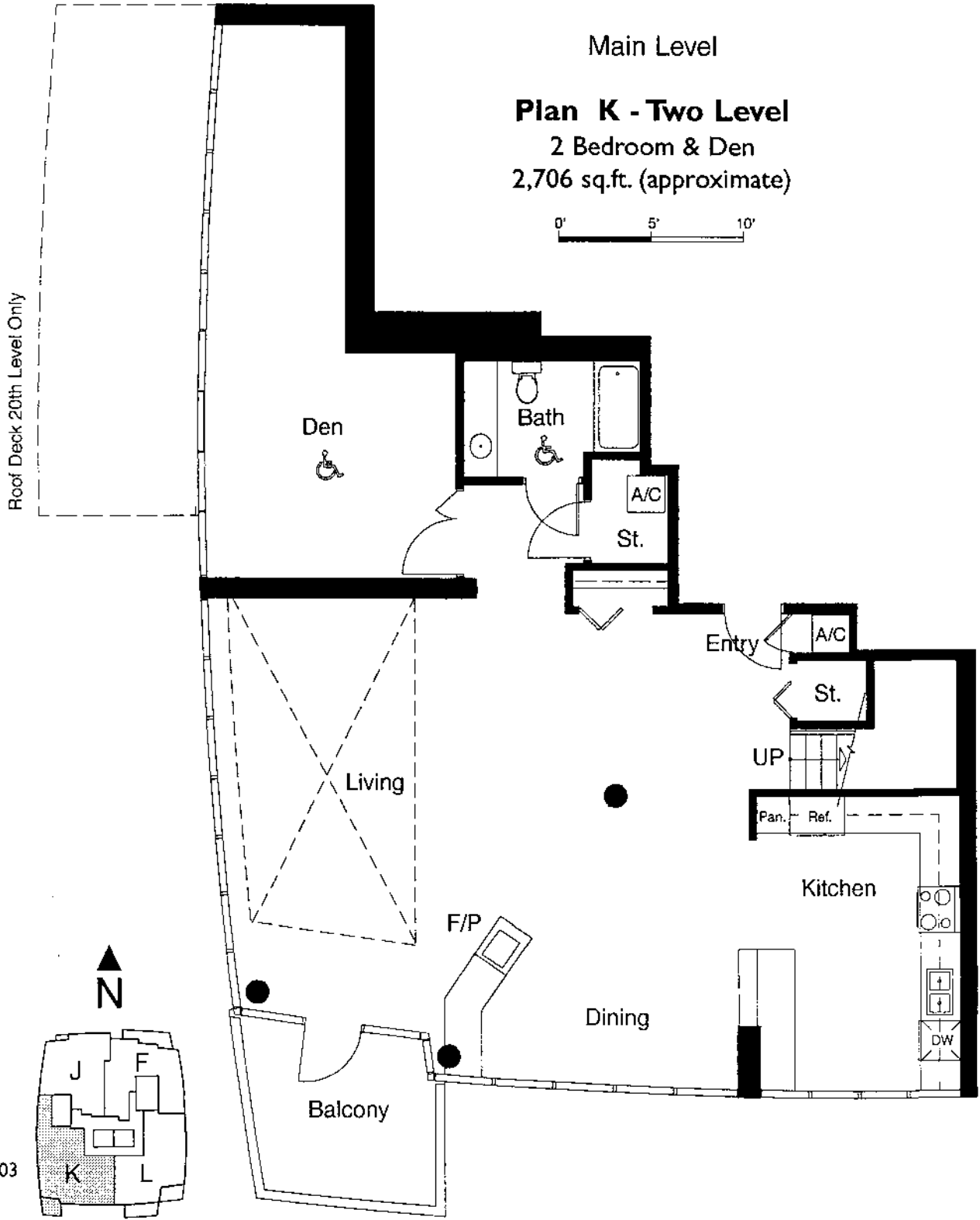
#2004 to #2204





# HORIZONS

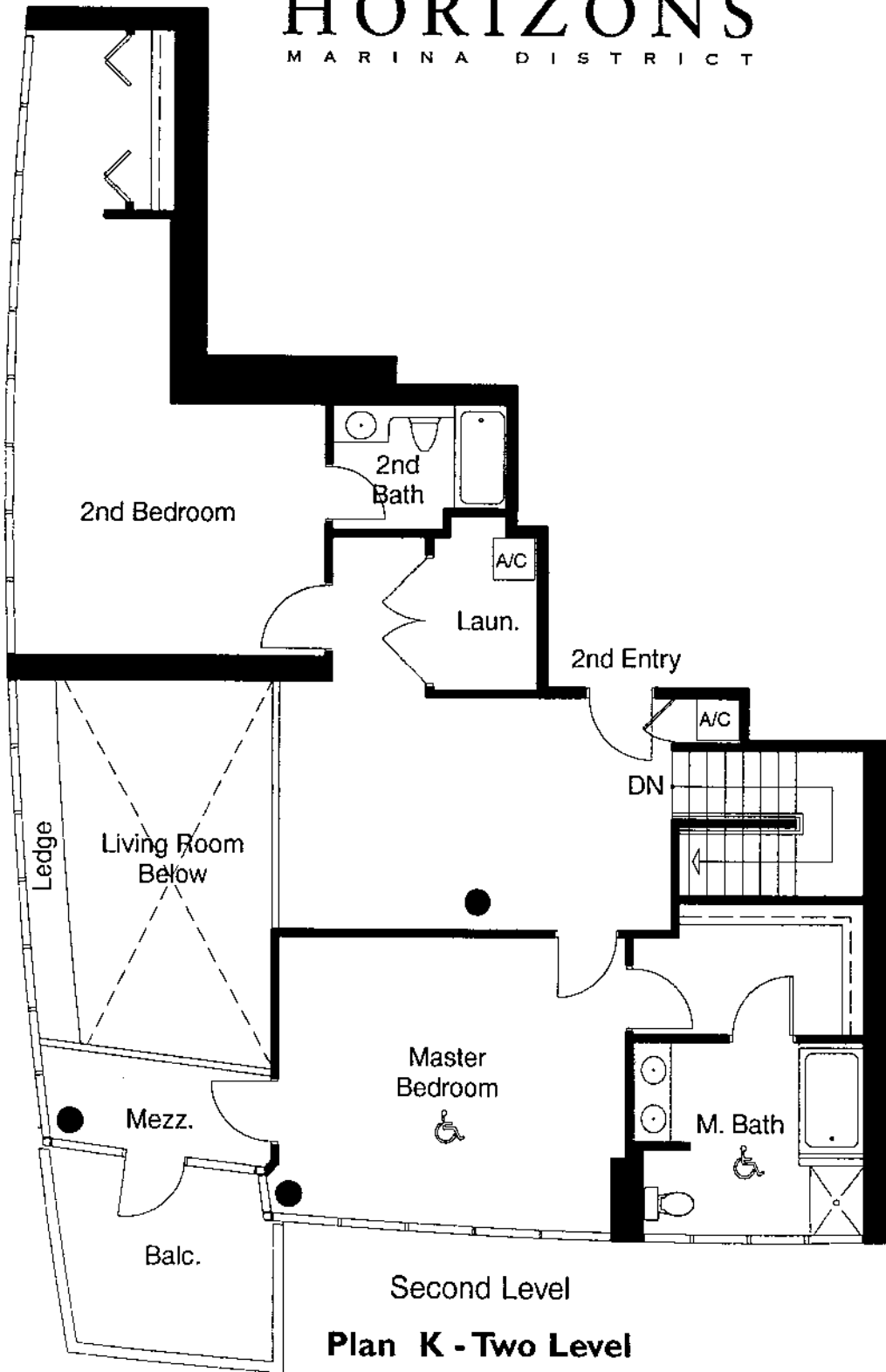
MARINA DISTRICT



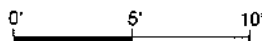
The builder reserves the right to change floor plans, elevations, specifications and prices without notice. Square footages as noted are approximations of each individual unit. The Purchaser is responsible for verification of the unit layout & square footage. All renderings, floor plans and maps are artist's conceptions and are not intended to be a representation of buildable dimensions or construction. Please refer to the actual Marketing sales contract for details.



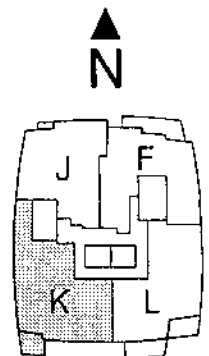
**HORIZONS**  
MARINA DISTRICT



Second Level  
**Plan K - Two Level**  
 2 Bedroom & Den  
 2,706 sq.ft. (approximate)



#2003 and #2203

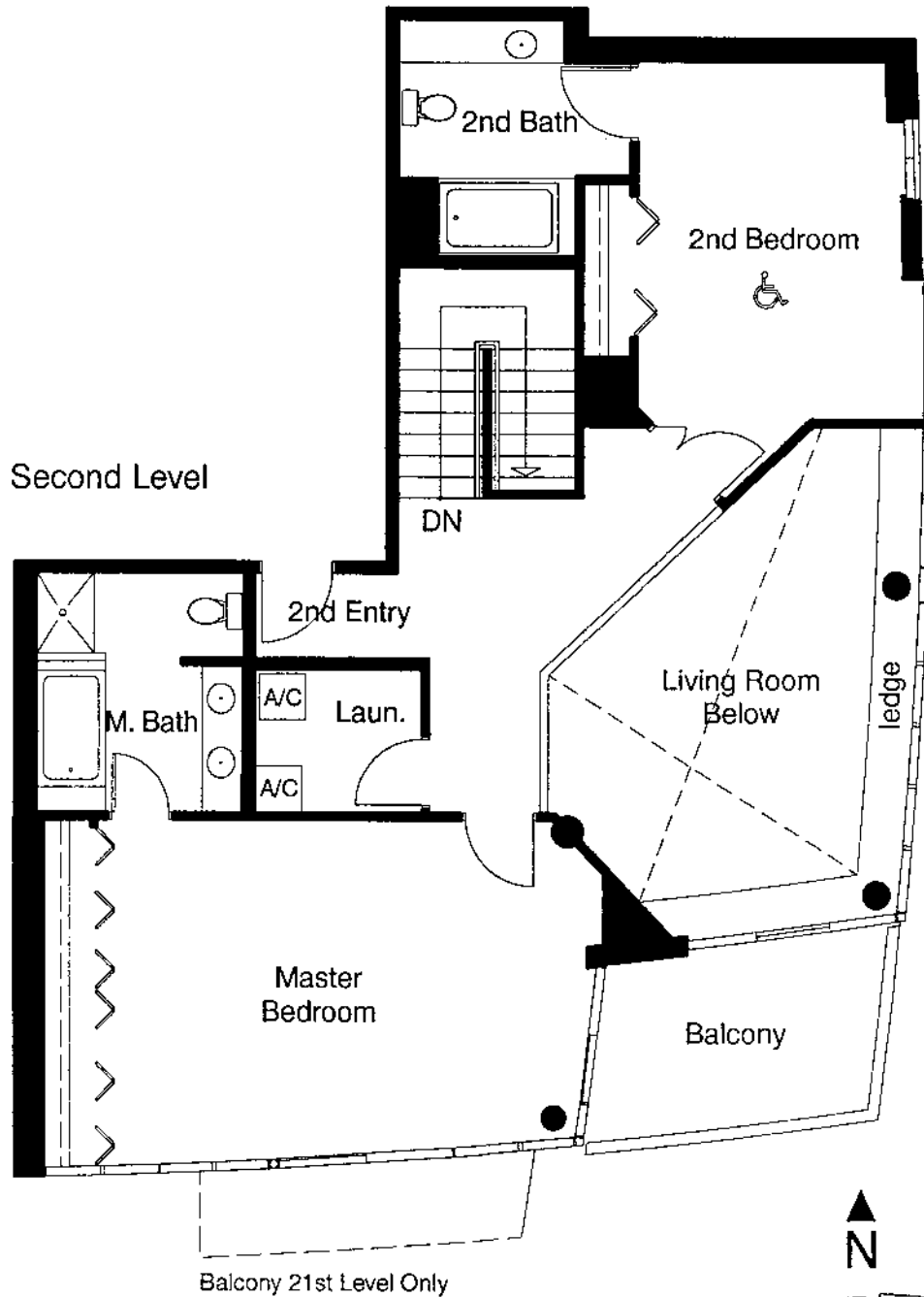


The builder reserves the right to change floor plans, elevations, specifications and prices without notice. Square footages as noted are approximations of each individual unit. The Purchaser is responsible for verification of the unit layout & square footage. All renderings, floor plans and maps are artist's conceptions and are not intended to be an actual depiction of buildings, driveways or landscaping. Floor plans vary. Ask a Horizons sales person for details.

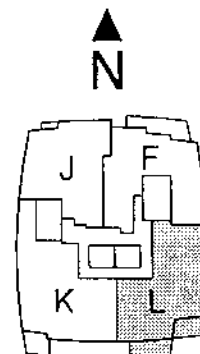
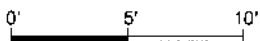


# HORIZONS

MARINA DISTRICT



**Plan L - Two Level**  
 3 Bedroom  
 2,479 sq.ft. (approximate)



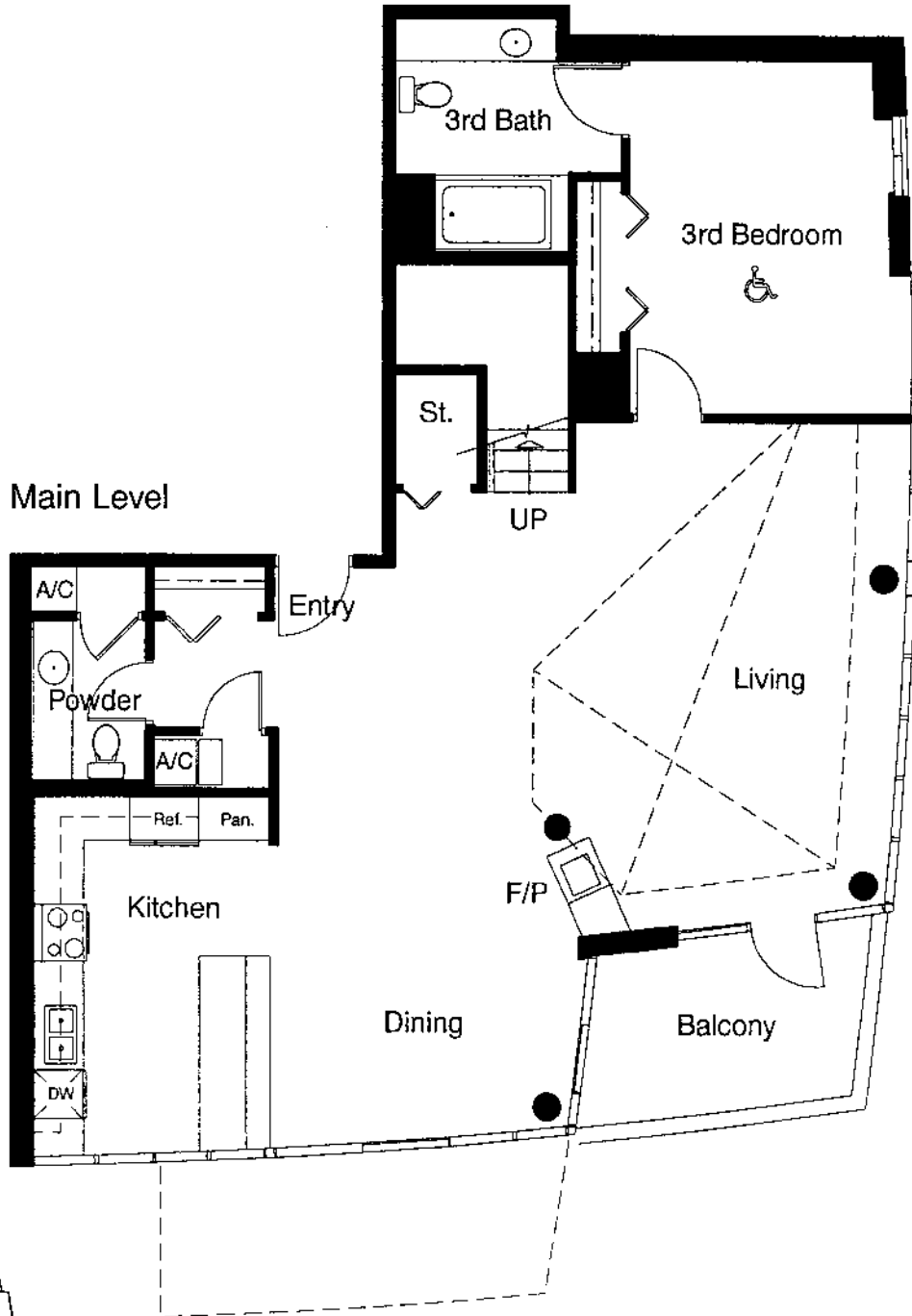
#2002 and #2202

The builder reserves the right to change floor plans, elevations, specifications and prices without notice. Square footages as noted are approximations of each individual unit. The Purchaser is responsible for verification of the unit layout & square footage. All renderings, floor plans and maps are artist's conceptions and are not intended to be an actual depiction of buildings, drawings or landscaping. Floor plans may differ from actual construction. For more information, please contact the sales office.

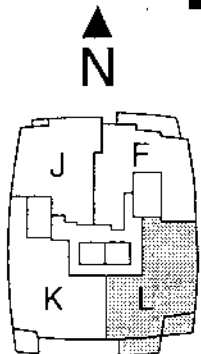


# HORIZONS

MARINA DISTRICT

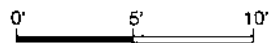


Rooftop Deck 20th Level Only



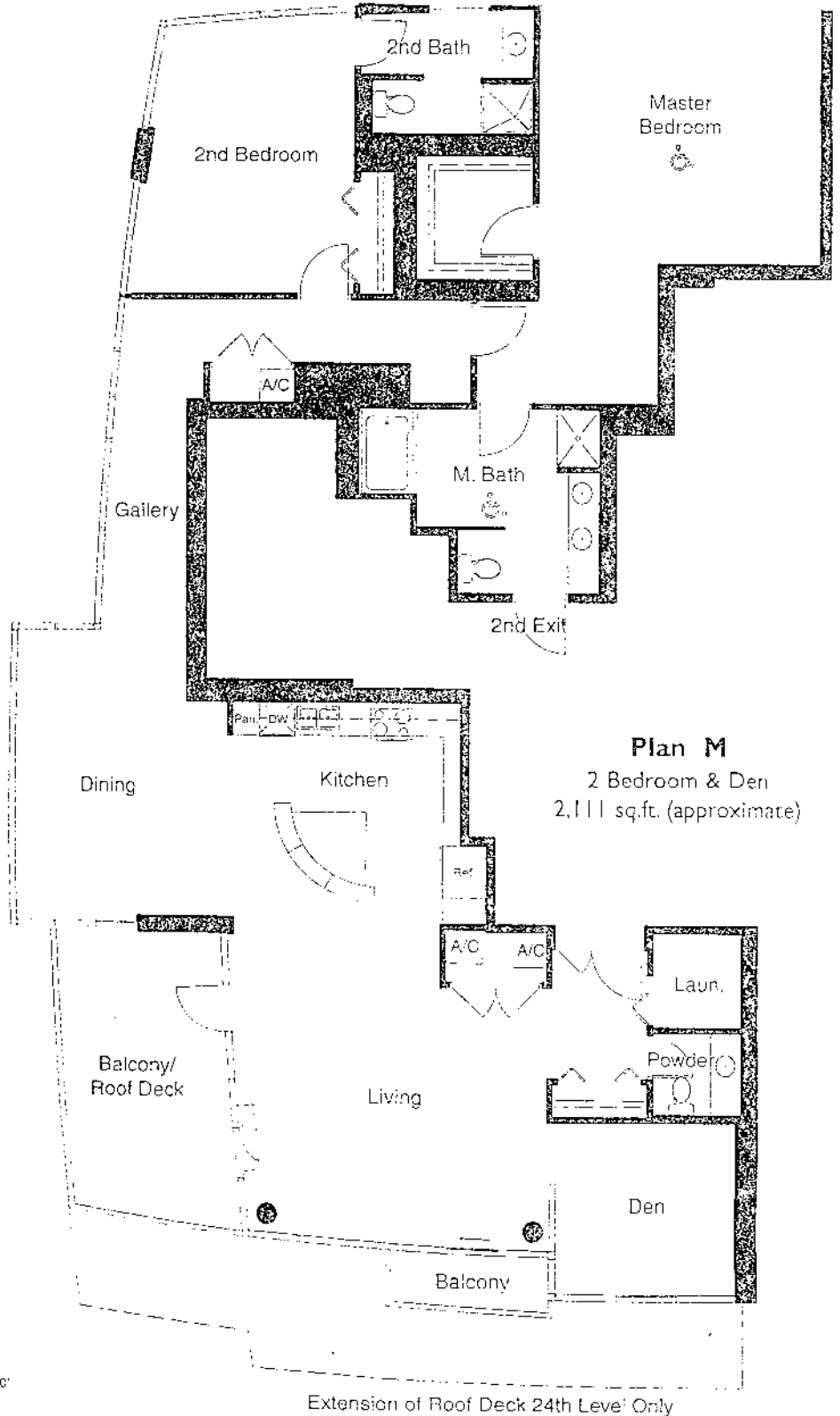
#2002 and #2202

**Plan L - Two Level**  
 3 Bedroom  
 2,479 sq.ft. (approximate)



The builder reserves the right to change floor plans, elevations, specifications and prices without notice. Square footages as noted are approximations of each individual unit. The Purchaser is responsible for verification of the unit layout & square footage. All renderings, floor plans and maps are artist's conceptions and are not intended to be

**HORIZONS**  
MARINA DISTRICT



**Plan M**  
2 Bedroom & Den  
2,111 sq.ft. (approximate)



o #2502

5' 10'

Extension of Roof Deck 24th Level Only

Builder reserves the right to change floor plans, elevations, specifications and prices without notice. Square footages as noted are approximations of each individual unit. Buyer reference to measurements be verification of the actual layout & square footage. All measurements, floor plans and prices are not to be construed as an offer or contract. For more information, please contact the sales office.





# HORIZONS

MARINA DISTRICT

