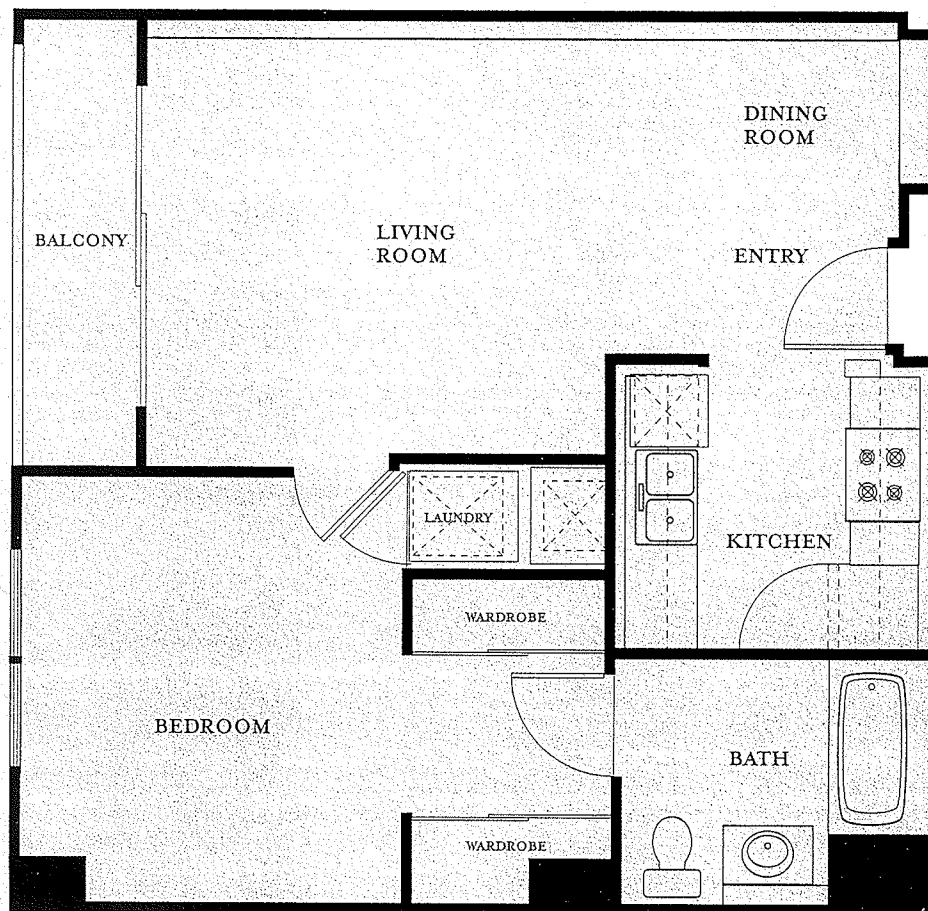




City living design sense

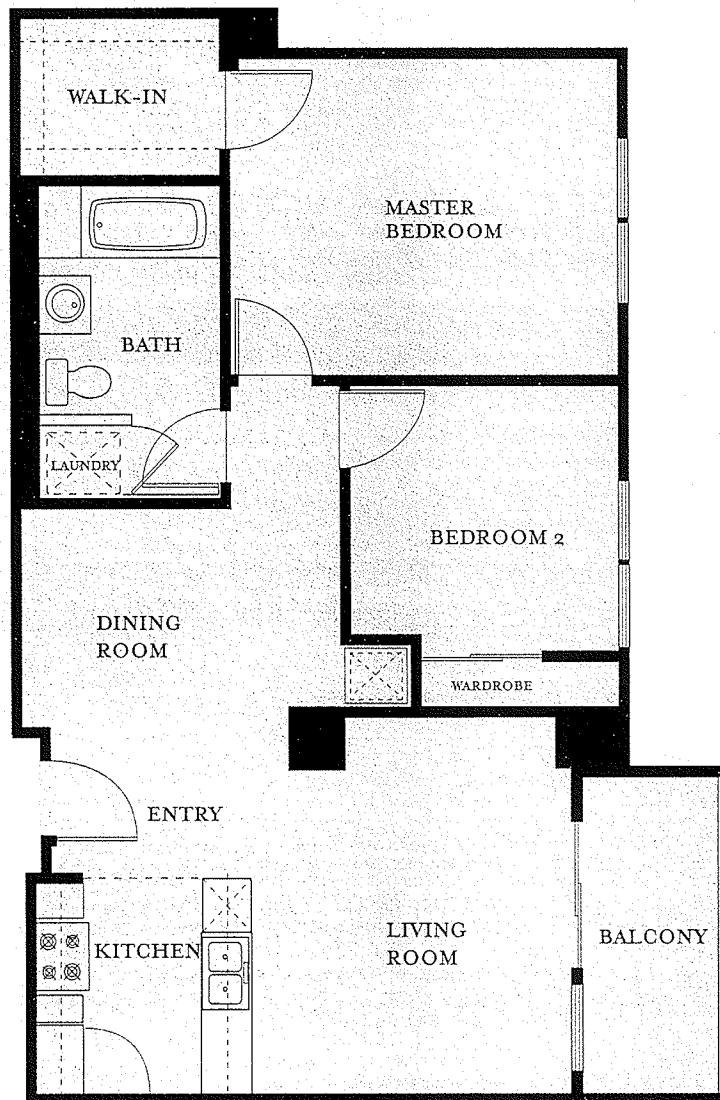
Two 18-story towers define the intimate Acqua Vista neighborhood, connected by an 8th floor recreation Terrazzo. Floorplans are diverse, with several situated to capture the panorama of San Diego - the skyline, the Bay, Balboa Park, Point Loma, and the Marina open your world to a new perspective.



FLOORPLAN A2

- Approximately 661 Sq. Ft.
- One Bathroom
- One Bedroom
- Balcony

Additional one bedroom floorplans: A1 and A3-A22 are available.
These floorplans have modifications.



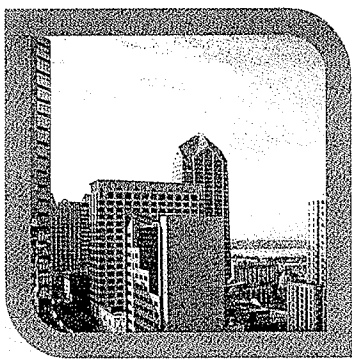
Amenity rich appointments

From the sophisticated lobby to the refined look of the architecture, Acqua Vista is a pleasure. Indulge in a retreat-style 8th floor Terrazzo where a pool, spa and spectacular views await. Gather to celebrate the grand panorama of your city and lifestyle. And return home to enjoy the superb appointments that enhance everyday life at Acqua Vista.

FLOORPLAN B1

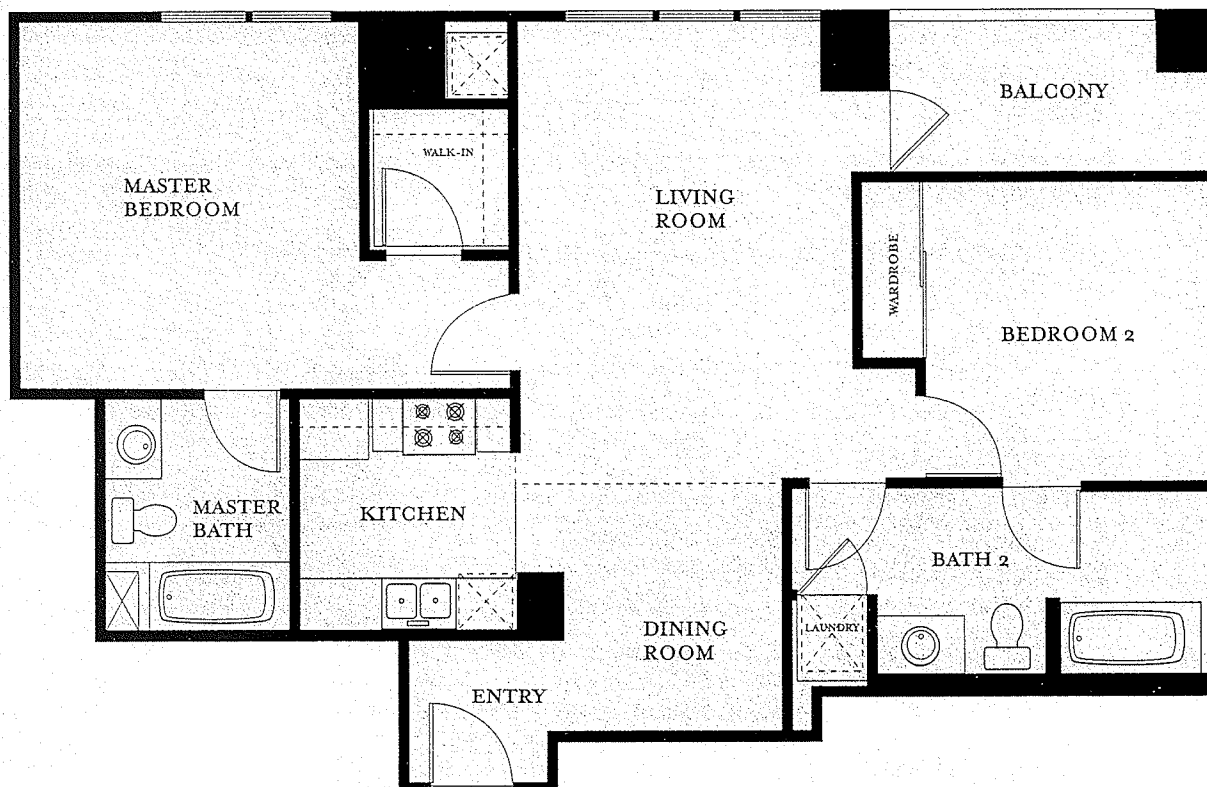
- Approximately 900 Sq. Ft.
- One Bathroom
- Two Bedrooms
- Balcony

Additional two bedroom floorplans: B2, B3 and B4 are available. These floorplans have modifications.



City life is a banquet

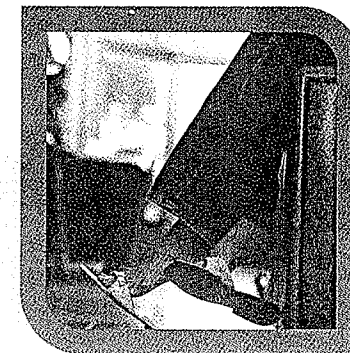
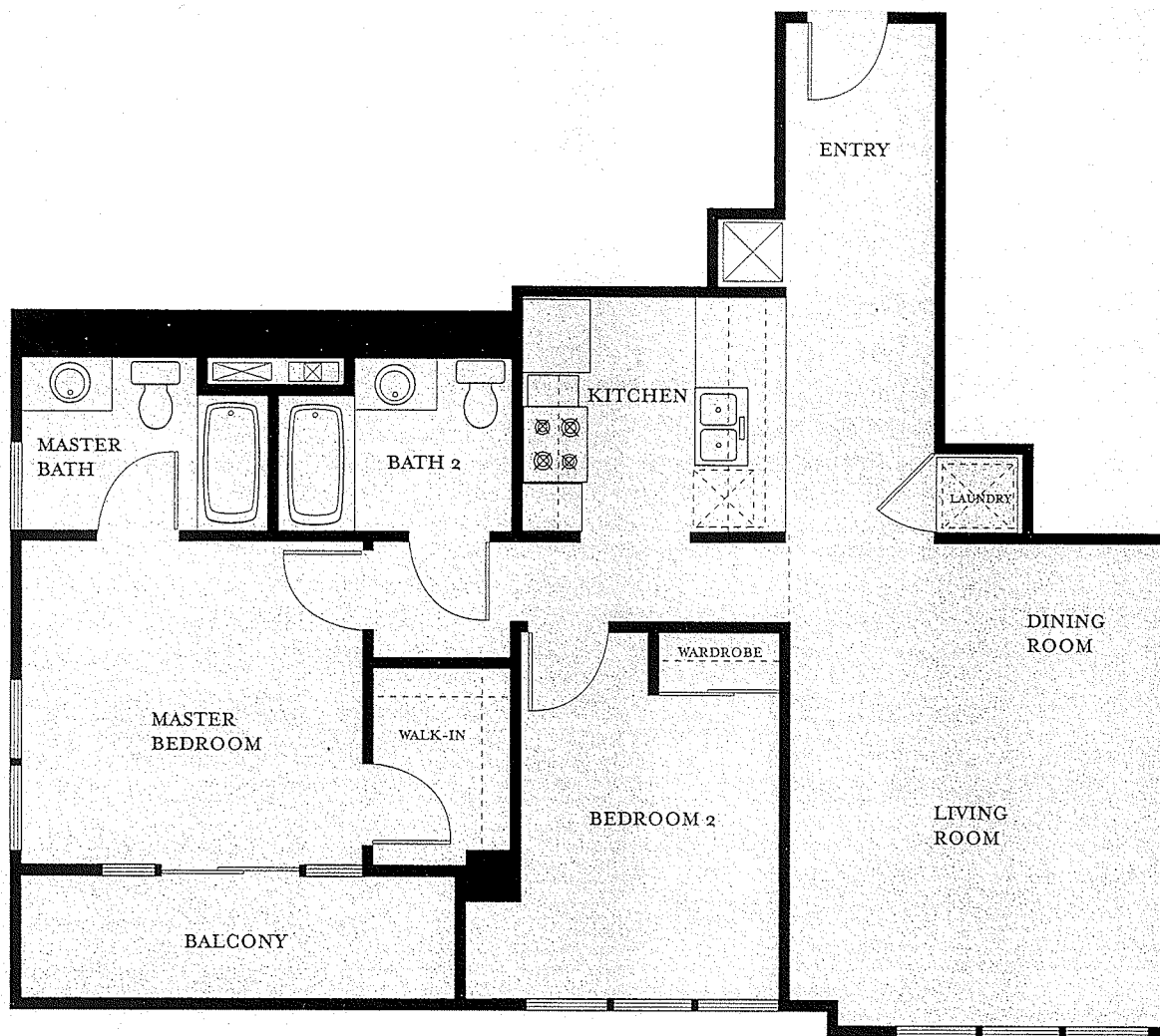
The convenience of Acqua Vista is a city-dweller's dream. The nearby Gaslamp District presents entertainment, theater, clubs and shopping. And Downtown San Diego abounds in destinations for work and play, from financial centers to Horton Plaza to Balboa Park and the world renowned Zoo. You've chosen a city address that is steeped in history and ever-pursuing the new horizon.



FLOORPLAN C1

- Approximately 1,003 Sq. Ft.
- Two Bathrooms
- Two Bedrooms
- Balcony

Additional two-bedroom floorplans: C2, C3, C5, C6, C7 and C8 are available. These floorplans have modifications.



K. Hovnanian's® credentials

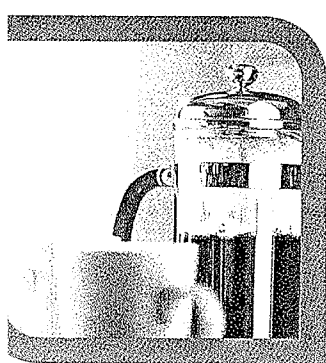
Listed on the New York Stock Exchange (HOV), K. Hovnanian® is consistently successful and highly regarded, as it has been since our founding as a family company in 1959.

Acqua Vista will afford you a rich portion of your city's ambiance as a complement to the quality of your home. Rest your future on a foundation of success and stability, as we welcome you to our homebuying family.

FLOORPLAN C4

- Approximately 978 Sq. Ft.
- Two Bathrooms
- Two Bedrooms
- Master Suite Balcony

Additional two bedroom floorplans: C2, C3, C5, C6, C7 and C8 are available. These floorplans have modifications.



An address with lifestyle

The remarkable value of Acqua Vista can be measured by all that it brings to your life. Handsome design and quality. At home recreation, and surroundings that assure an enviable lifestyle. Strolling the shops, greeting shopkeepers and neighbors, embracing your city like a familiar friend.

PENTHOUSE FLOORPLAN E5

- Two-Story Penthouse
- Approximately 2,400 Sq. Ft.
- Three Bedrooms
- Four Bathrooms
- Family Room
- Three Balconies

Other Penthouse floorplans: D1, E1, E2, E3 and E4 are available. These floorplans have modifications.

