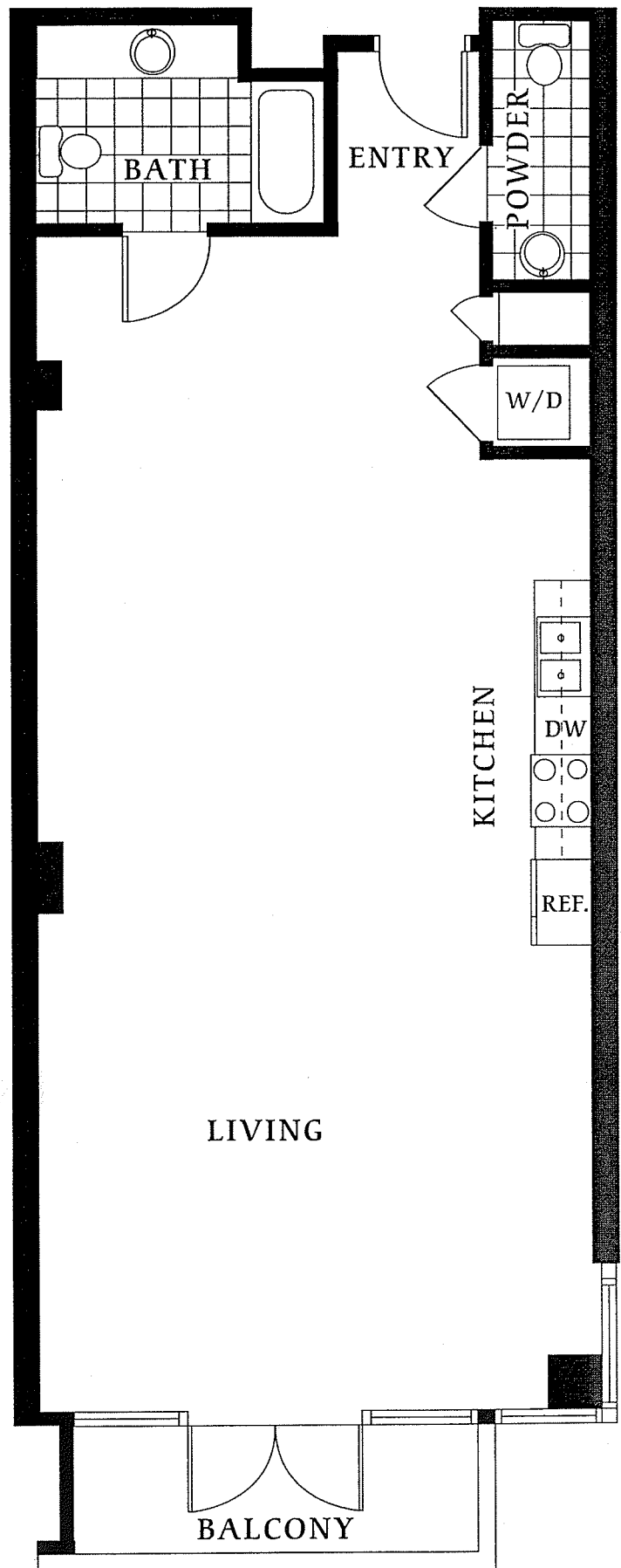
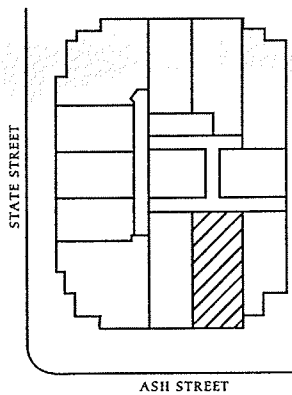


# 350 West Ash

URBAN HOMES

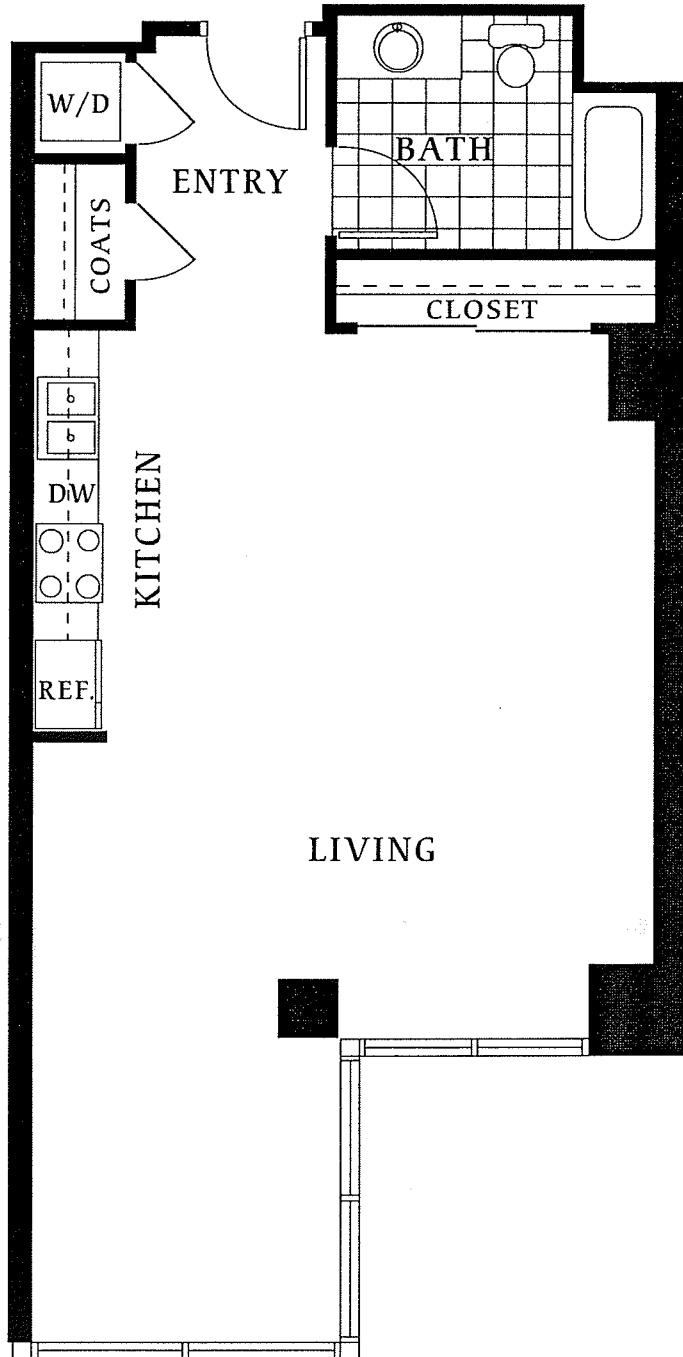
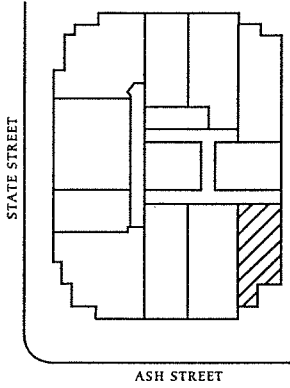
*Large Loft*  
*Approximately 920 square feet*



The developer reserves the right to make modifications and changes to floorplans, product design specifications and features should they be necessary. Prints, elevations, and square footages are approximate and subject to change without notice.

# 350 West Ash

URBAN HOMES

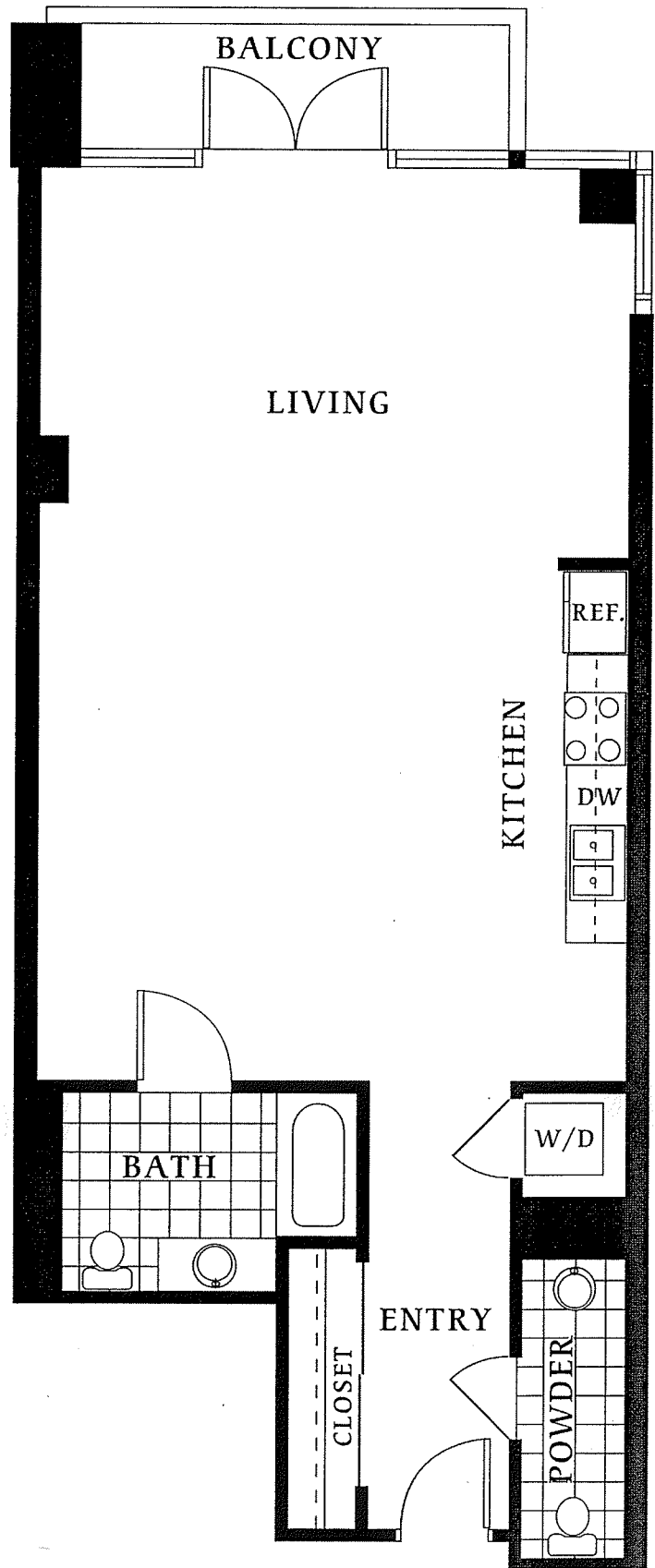
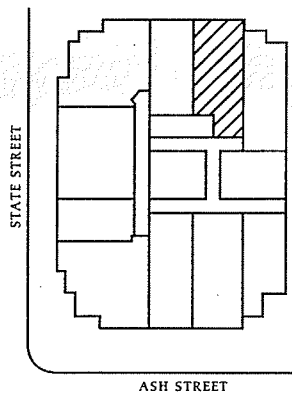


*Studio with Den  
Approximately 700 square feet*

# 350 West Ash

URBAN HOMES

*Loft*  
*Approximately 840 square feet*



The developer reserves the right to make modifications and changes to floorplans, product design specifications and features should they be necessary. Prints, elevations, and square footages are approximate and subject to change without notice.